



*Dreams of a summer past.*

★ ★ **MOTTO FOR THE MONTH** ★ ★  
 'Take time to be holy.'

## Our Birthday

With this issue we complete our 4th year of publication. A period that has seen many changes within the Company, expansion in many ways with new buildings within the Airport site and creation of further outposts of activity, such as Nailsea and other satellite locations.

We have tried to reflect the moods and the changes and to fulfil our original aim and object - to inform, educate, amuse and bind together as a family all who make up the Company. Once again we have no means of checking on our success or failure, as you, the readers do not let us know. This is a company newspaper which can only fully succeed if everyone accepts that it is 'their own' and help to make it a success. Only by using it can we make sure that it grows stronger and gets better.

During the showing of the film 'Opportunities within GEC', many requests were made to use the MAV News, but little use has been made of it to satisfy those requests. Divisional Managers and Departmental Managers have a ready-made vehicle to disseminate information and to bring to the attention of the rest of the Company, what they do and how and who does it. Full usage in this way will do much to enhance our reputation as a company newspaper and to cement the ties of a commonality of interest of all who work for Marconi Avionics.

Can we make our fifth year a year of growth and stabilization and real achievement? The appointment of enthusiastic representatives in all divisions/departments would be a great step forward. Let us make it our newspaper, not mine or his or theirs. It is ours.

J. Griffiths  
 Editor



## SUCCESS FOR BRITAIN'S NEW AIR DEFENCE RADAR

Marconi Avionics Foxhunter enters new phase in Tornado F2

Following its first flight in the Tornado Air Defence Variant (ADV) on 17 June 1981, Foxhunter has now entered a new phase, the airborne proving trials of the Tornado weapons system. Foxhunter, the new multi-mode pulse doppler radar from Marconi Avionics Limited has since made a number of successful flights in A 03, the third Tornado ADV prototype. During these initial flights the radar has been operated in its search, track-while-scan and lock-on modes, as well as in ground mapping.

An initial production contract was placed by the Ministry of Defence Procurement Executive in October 1979 to cover the production investment for such items as tooling and test equipment, and manufacture of the first production batch. Marconi Avionics will deliver the first production Foxhunters in 1982 and the radar is expected to enter RAF service in 1984.

The long range and advanced facilities of this multi-mode, look-down radar are key to the increased air defence capability which the Royal Air Force will achieve when the Tornado F2 goes into service. With this achievement and the realization of its sophisticated radar and mission system for the RAF's AEW Nimrod, the Company has established an unparalleled capability in advanced airborne radar design. This has provided a springboard for derivatives of Foxhunter which Marconi Avionics is aiming specifically at the export market for current and future combat aircraft.

The Company is currently giving vigorous support to British Aerospace and Panavia in world-wide marketing of Tornado variants.

The initial flights with Foxhunter have been preliminary to the next phase of trials, which includes operation as part of the Tornado's weapons system.

In parallel with the system trials in Tornado ADV, which are being carried out from the British Aerospace airfield at Warton, Lancashire, radar proving and evaluation flying is continuing from the Royal Aircraft Establishment airfield at Bedford. This involves the radar, installed in a specially modified Buccaneer aircraft, which had been used for initial evaluation. This will now continue to support the Tornado trials through specific analysis of radar system performance aspects.

The Marconi Avionics Foxhunter has a target acquisition range in excess of 100nm (185km) and incorporates a track-while-scan capability against multiple targets. The radar employs digital processing techniques including microprocessors to reduce size and weight and to increase reliability. By virtue of unique signal and data processing methods and the design of its aerial, Foxhunter is provided with excellent capabilities for look-down, long range detection against low flying targets, and exceptional resistance to ECM.

th

Marconi Avionics News  
Editorial Office  
Floor 4  
Tower 3  
Airport Works  
Rochester, Kent

Editor: *Jess Griffiths*

Liaison Officers:

*Lynn Roberts, Atlanta, USA  
Gerry Rich, Naishe*

*S. Alltimes, Accounts  
Sid Golding, CAC/CD*

*Fergus Maloney, FARL (New Road) John Garstin, IN  
D.J. Roberts, CMS Rod Cole, MASD Dave Lucas, ADD  
Colin Matthews, PSD Barry Wallington, Apprentice School  
Joan Golding, ISD Ken Castle, Ann Golding, D.H. Pellis, ATE*

*Others are required for: AS & R (New Road), CDD, GYRO,  
AS & R (Flying School), RAS.*

Volunteers should offer their services through Divisional Administration Officers or direct to Editor.



## OBITUARY

We regret to record the death of Peter George Johns, on 6 August 1981, and offer our sympathy to his family and friends on their great loss.

Peter came from the RAF in June 1958 and began his career as a Flight Test Observer, working from Cranfield under Borehamwood.

In August 1958 he transferred from Borehamwood to Rochester as an engineer on Military Flight Systems. Joining TAC as Trials Project Engineer in 1967, he was promoted to Project Controller in 1968. On the fusion of TAC/MAC to form FCD he was further promoted to Deputy Project Manager in 1974 and Project Manager in February 1975. He was part of the CACD team at the time of his demise.

As we go to press, we learn of the sudden death of Arthur Cousins, one time member of Fuse Division, who transferred to Frimley in 1972 (a full report will appear in the next issue).

## In memoriam

A special Memorial Service for the late David Broadbent was held at Medway Crematorium on 20 August 1981 and was attended by his family and friends and many company personnel.

As reported in a previous issue, David—a Consultant Engineer of the Company, died in a motor accident while on the continent. His body was cremated in France and his ashes brought to England and were scattered, after the Memorial Service, in the gardens of the Medway Crematorium, Robin Hood Lane.

## Marriages

On 8 August at St. Peter's Church, Aylesford, Keith Dixon, a Draughtsman within ATE Drawing Office, married Anita Craig a typist with Lloyds Overseas. Keith received an ice bucket and a set of glasses from his colleagues and friends.

Steven Broome, a Draughtsman within ATE Drawing Office, married Lesley Tailor, a VDU operator at the Kent Fire Brigade Headquarters, on Saturday 29 August at Linton (Maidstone) Parish Church. Steven received a canteen of cutlery from his friends.

Cliff Norris, a Tester in ADD, was married to Sharon Wickham, a Stock Control Clerk in PSD, on 7 August at Chatham Registry Office. Best wishes and congratulations were received from friends in PSD and they were presented with gifts of bathroom scales, sheets, bread bin, rolling pin (P), oven mits and tea towels.

On 12 September 1981 at St. Matthew's Church, Rainham, Gary Pilbrow of MASD QA married Debra Thirgood an employee of Midland Bank Ltd., Gillingham. Gary has been a full time employee for approximately 3 years after studying at Medway College of Further Education and Bath University.

Janit Campbell, Reprographic Department, married Paul Darby, ISD Drawing Office, on Friday 14 August at Chatham Registry Office. Friends and colleagues subscribed to present them with a Black and Decker Workmate. Paul has been with the Company for 5 years and Janit for 2 years.



Janit Campbell and Paul Darby.

Des Cass, a Draughtsman in ATE Drawing Office, married Maria Arncliffe, a CO in OHS on Saturday 12 September at St Thomas of Canterbury Church, Rainham.

Peter Woodgate, a Draughtsman in ATE Drawing Office, married Elaine Gibb, a Draughtswoman with GEC Gravesend at Longfield Parish Church, Longfield Nr. Gravesend on Saturday 12 September.

At St. Mary's Church, Coventry, on Saturday 5 September Bill McKenna, of ISD Engineering, married Colette McShelley.

Tracey Billing, Gyro Division—Goods Inward Inspection, married Peter McGrogan, CMS, on Saturday 29 August at St. Peter's Church, Bredhurst. It was certainly an Elliott family affair as the bride's parents both work for the Company and also her sister (Sub-Contracts Department), whilst the best man, brother of the bridegroom, works in CMS.

## Congratulations

Hearty congratulations are offered to Martin Wray who celebrated his 21st birthday on 16 September. Martin is a trainee Estimator in CACD.

## Births

CONGRATULATIONS TO:  
Aimee and Tony Acaster on the birth of their son, Alexander, on 20 August. Tony is a member of ATE Drawing Office.

Kit and Rita Patel on the birth of their first child, Krina, who was born at All Saints Hospital, Chatham, on 18 July and weighed 6 lbs. Kit works in ATE as a Senior Development Engineer on the MRCA Project.

## MEDICAL INSURANCE

Commencing on 1 November 1979 the General Electric Company Ltd. made arrangements with the British United Provident Association (BUPA) for a GEC group to be formed. At that time subscription rates were fixed for a two year period. During recent weeks GEC has been talking with BUPA about the level of subscription rates which would apply from 1 November 1981. The BUPA proposals mean increases for employees on the London scale of about 96% and on the Provincial scale of about 67% and GEC has been unable to persuade BUPA to reduce these proposals.

It is recognized that charges for hospital beds, consultants' fees and other medical treatment have increased appreciably during the past two years, but GEC takes the view that the proposed new rates are excessive and have informed BUPA that they are not recommending them to GEC employees. The present arrangement with BUPA will terminate on 31 October 1981.

Concurrently, rates have been obtained from other medical insurance organizations and it has been decided to start a scheme with Western Provident Association (WPA) from 1 November 1981. A number of companies which have had medical insurance schemes with WPA for some years have been contacted and all have given satisfactory reports.

Each of the current subscribers to BUPA will receive a WPA application form shortly.

The subscription rates per calendar month for the new scheme are given below, these are applicable for the first 12 months.

	London £	Provincial £
Single	5.70	4.00
Married	11.40	8.00
Family	13.60	10.25
<b>Over 65</b>		
Single	11.89	8.99
Married	23.46	17.75

Information is being sought to indicate these rates as a weekly amount in order that employees can relate them to our period system. Those personnel not presently subscribing to the GEC-BUPA scheme but wishing to join WPA should contact John Neate, Personnel Department, telephone int. 203, ext. 64.



## CASTAWAY



We take as our castaway, this month, one of the school leavers on the work experience course, under the Manpower Services Commission. Elaine Gulvin, is 16 years old and is located in CACD in Scheduling Department gaining valuable experience before probing the uncertainties of the workaday world.

## MUSIC

Geoff Love and his Orchestra—enjoyable music to listen to at any time.

South Pacific Music—to get myself into the right frame of mind for the island!

Shakin' Stevens—I simply enjoy his songs.

Record by the Electric Light Orchestra—always good entertainment.

Elvis Presley (King of Rock and Roll)—good songs.

Greek Island Music—for my relaxation.

## BOOKS

David Copperfield by Charles Dickens—a good story which I always enjoy.

Across The Barracades by John Lingard—an interesting story, of an island.

See Stories by Alan Villier—as an amateur sailor, I delight in stories to do with the sea.



For this month, we go back to the Middle Ages and re-live those adventurous days, as far as food is concerned! In medieval times it was necessary to devise dishes, such as small dumplings, which could be easily eaten using fingers, a spoon or on the point of a knife.

## LIVER DUMPLINGS

(makes 12-16 small dumplings)

**Ingredients:** 4oz chicken livers, finely minced or blended in liquidiser  
1 beaten egg  
grated rind of 1/2 lemon  
1 small onion, skinned and finely grated  
2 level teaspoons finely chopped parsley  
3oz soft white breadcrumbs  
1/2 level teaspoon ground nutmeg  
1 clove of garlic, skinned and crushed  
1 level teaspoon powdered thyme  
salt and pepper  
stock or stock cube and water

**Method:** Combine all the ingredients in a bowl and mix well. Form into balls about the size of a walnut, if the mixture is a little too soft, add a few more breadcrumbs. Drop the dumplings into boiling stock, cover and simmer for 6-8 minutes. Drain. Serve hot with a piquant sauce and savoury rice.

## MEAD

When our Saxon forebears settled down to feasting, boasting or fighting it was mead that quenched their thirst and fired their blood. You can still make it today!

**Ingredients:** 1lb honey  
1/2lb dried hops  
8 pints water  
1oz fresh yeast or 1/2oz dried yeast

**Method:** Dissolve the honey in the water, add the hops and simmer for 1 hour. Remove the pan from the heat. When the liquid is luke warm, stir in the yeast. Cover and leave for 3 days. Strain the liquid into bottles and cork lightly. The corks will 'pop' out and some liquid will spill during fermentation, so stand the bottles in a place where this will not matter. Keep one bottle aside for topping up the others during fermentation. When fermentation is over, i.e. when no more bubbles are rising in the liquid, siphon off the mead into clean bottles, leaving behind any deposits. Cork tightly and keep the mead for 12 months before drinking.

## BLOOD TRANSFUSION SERVICE

The next visit of the Blood Transfusion Service to the Rochester Works will be on 12-16 October for the purpose of collecting blood. Donors are required as much as ever, existing donors will be welcomed together with any new volunteers.

In order to save time, and to have an orderly collection, all those wishing to give blood must obtain an appointment card from the main surgery, before presenting themselves at the collecting centre. The attention of all would-be donors is drawn to a strict adherence to the time of appointment, to prevent undue waiting and time wasting.

Both sides of the appointment card are illustrated here.

<p>THE BLOOD DONOR UNIT Main Factory</p> <p>DAY TIME</p> <p>PLEASE COME Blood Donors save lives</p>	<p>IF FOUND PLEASE RETURN TO: SURGERY</p> <p>This card is the property of Marconi Avionics Limited</p>
---	--

## Acknowledgement

The following letter has been received from Mrs. Veronica Donoghue, a nurse, who left the Company on Friday 4 September.

Dear friends,  
With mixed feelings I left the Company on September 4th, after having been there nearly 8 years. I feel I have left a great many friends behind but I wish to express my thanks for the many baby gifts I have received from you all, and also to thank you for the help I have received on more than one occasion when called out to an emergency. I hope this will extend to any replacement nurse and also continue for the colleagues I have left behind.

Thank you again for the friendships, the gifts and the help you have afforded me over the years.

Yours faithfully,  
Veronica Donoghue

## Heard in the office

'I don't want to buck the system—to be quite honest, I don't even know what the system is!!!'

## Marconi Avionics makes senior marketing appointment for Offshore Projects

**A. Granville Morgan appointed Marketing Executive, Offshore Projects Group**

To follow up its initial successes with 'fail-safe' electronic controls for the offshore industry, Marconi Avionics Limited announces the appointment of a Marketing Executive for its Offshore Projects Group at Nailsea, Bristol.

Mr. A. Granville Morgan, 46, who has established a personal reputation in the offshore industry, has joined the Company to take up this new appointment, in which he reports to the Manager of the Nailsea operation, Mr. C.J. Frost.

Tom Morgan, educated at Aldenham School, was formerly Executive Director of a number of offshore contracting companies within the Royal Bos Kallis Westminster Group N.V. and Principal Partner of Granville Morgan and Groves Associates. He is a Fellow of the Institute of Petroleum, Fellow of the Institute of Directors and a Member of the Institute of Marketing. Tom, with his wife Betty and two daughters, will shortly be moving from his 17th century cottage on the shores of Chew Valley Lake near Bristol. His hobbies include Microite aviation and golf.

Marconi Avionics, together with NL Shaffer of Houston, Texas, are developing and producing, under a teaming agreement, microprocessor-based electrohydraulic control and data acquisition systems for subsea oil well completions, the first of which is being delivered this summer for installation in the BP Magnus Field.

Marconi Avionics sees a growing need for advanced electronics for control, telemetry, remote inspection and many other uses, as the sources of oil become more diverse and their environments more severe, and as wells are sunk in deeper and more remote waters.



A. Granville Morgan.

## Marconi shows its offshore expertise

Four GEC Marconi Electronics companies exhibited at Offshore Europe '81 in Aberdeen, during September 1981.

Marconi Avionics Limited exhibited the expanded range of systems, equipments and services now supplied to the offshore industry. Examples were:

- (1) Television systems for important surveillance and control tasks on platforms and ships.
- (2) Non-conductive underwater couplers, for electrical power and electronic signals, as fitted to the 'fail-safe' control system being supplied for the BP Magnus Field.
- (3) Underwater television with natural colour reproduction.
- (4) Details of a rapid, mobile, service for detecting and eliminating hydraulic electromagnetic interference between equipments on a rig or shore installation.

Marconi Avionics is teamed with NL Shaffer, Houston, Texas, for electrohydraulic controls and is working closely with oil companies in identifying other new areas of development required in instrumentation and in remote visualization and control.

The range of communications options offered by Marconi

Communication Systems Limited for offshore applications was well illustrated:

- (1) H7200 microwave line-of-sight equipment.
- (2) Satellite communications
- (3) Tropospheric scatter systems.

**EASAMS Limited** is a problem solving, project management and system design organization with considerable experience and expertise in many diverse areas of offshore work that require specialized and analytical examination.

**The Marconi International Marine Company Limited** is involved in a very wide range of electronics for the offshore industry. Three major aspects were demonstrated:

- (1) Internal communications.
- (2) External communications.
- (3) Marconi Marine demonstrated a new scanning telex system incorporating its own transmitter, receiver, teleprinter and error-correcting system.

## Apprentice activity

The following, having completed their training programmes, have now been posted to various departments and divisions to fulfill their chosen careers:

J.S. Caysar	MASD Eng
I.C. Daisley	ADD Eng
D.J. Edwards	MASD Q/A
P.F. Humphrey	ADD Eng
M. Ingleton	ADD Eng/Design
M.A. Jenkins	ATE Eng
C.S. Lawrence	PSD Eng
R.J. Medgett	ISD Logistics
C.B. Mills	PCD Eng
C.W. Ostler	PCD Eng
P.J. Scott	ISD Logistics
D.P. Smith	MASD Eng
H.F. Stewart	MASD Eng
T.D. Voisey	CAC Eng
R.A. Wills	ADD Eng
K.I. Withers	ATE Q/A
D.L. Young	CAC Eng
I.L. Cooper	AS & R Eng
K.J. Crozier	MASD Eng
S.W. Driver	ADD Eng
A.F. Giles	ADD Q/A
J.W. Inkpen	PSD Q/A
P.D. Orchard	MASD Q/A
J.C. Tomlin	ISD Q/A
G.C. Williams	MASD Eng
D.F. Drury	COG T/A
M.C. Cooper	PSD Eng
D.P. Moller	COG Standards/Lab
L.R. Atkinson	CAC Q/A
J.S. Ambrose	CAC Planning
R.C. Baldwin	GYRO Planning
A.J. Bristow (Miss)	ISD D/O
D.P. Crouch	ADD Planning
D.S. Elder	GYRO Insp/Planning
M.A. Filion-Payoux	ISD Prod/Eng
I. Gillham	IND Estimating
M.A. Howard	GYRO Cal/Test
R.J.W. Kinnear	MASD Test
K.P. McKee	ADD Planning
M.G. Mencham	IND Planning
L.J. Rossiter	ISD Tech/Pubs
I.J. Sapsed	ATE Prod/Eng
N.J. Waite	ISD Instr/Tech
C.P. Walsh	MASD Test
M.J. Wray	CAC Estimating
J.R. Laws	GYRO D/O
A.D. Mason	CMS Planning
K.L. Shields	ADD Fitting
K. Wood	CMS Planning
I.T. Betts	PSD Inspection
S. Gibbins	AS & R Inst/Tech
N. Sutherland	AS & R Inst/Tech
D.K. Hardex	CMS Bench/Fitting
P. Bird	ISD Test
M.S. Bowen	ISD Mod/Shop/Wir
M.L. Goopair	ADD MOD/Shop/Wir
D.I. Leach	GYRO Wiring
G.A. Ryall	ADD Test
G.R. Speed	AS & R Inst/Tech
P.E. Styles	CAC Model Shop
M.L. Chapman	ADD Test
C.A. Clark	ISD Test
A.J. Durbin	CAC Inspection
N.J. Foan	PSD Test
S.A. Hodges	PCD Test
R. Ives	PCD Test
J.G. Mace	CAC Cal/Test
A.R. Munn	CAC Cal/Test
D. Parr	GYRO/Test
V.A.P. Rossi	ISD Test
C.D. Tovey	IND Test

## Cdr. D.W. Malim

The item below, for which we are indebted to our sister journal—Brown Lane News, will be of interest to all former members of Force Division.

Cdr D.W. Malim, who retired on 31 July 1981, after almost 19 years with the Company, paid his farewell visit to the Portsmouth Site on 14 July.

For the greater part of his time with the Company Cdr Malim has held senior appointments as Joint Managing Director of Elliott Space and Weapon Systems Limited and subsequently as Chairman of Marconi Space and Defence Systems Limited.

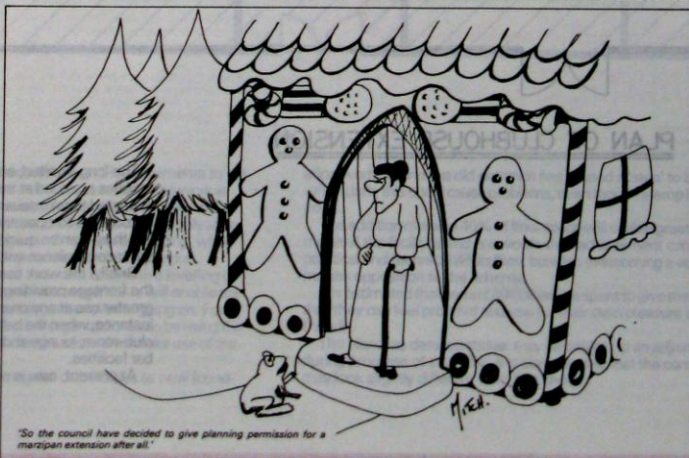
Cdr Malim takes with him our good wishes for a long and happy retirement.

## APPOINTMENTS

With effect from Monday 27 July 1981, Mrs. Carole F. Chambers is appointed Confidential Secretary to the Commercial Manager Airborne Display Division.

We are pleased to announce the appointment of Mr. R.M. Wells as Foreman of the Model Shop, Mechanical Section, Airborne Display Division, with effect from Monday 24 August 1981.

He will be responsible to Mr. D.E. Marvell, Model Shop Superintendent.



Marconi Avionics Limited, Rochester

Applications are invited for the

5th Annual Award of the

## HASKETT TROPHY FOR ENGINEERING

which is judged to be the best engineering achievement of the year that is likely to lead to an improved product.

The competition is open to all engineers employed by Marconi Avionics Limited at Rochester up to and including Project Manager or equivalent grade. It is open to an individual entry or team entry.

The trophy engraved with the winners' names will be exhibited in the main foyer and a replica miniature trophy will also be displayed in the winning entrants' division, in each case accompanied by a suitable descriptive panel of the entry. A miniature souvenir trophy will be presented to the winner or members of the winning team, as appropriate.

In addition, the Company will donate a gift to be chosen by the winner or winning team to the value of £300.

The sum of £25 will also be paid to every other qualifying entrant, up to a maximum of £100 for a team entry.

The judgement as to whether an entry is of qualifying standard will be made by the Divisional Manager of the appropriate Division.

The competition will be judged by a panel of five engineers from within and outside the Company. Innovation, effort and cost effectiveness will be taken into account.

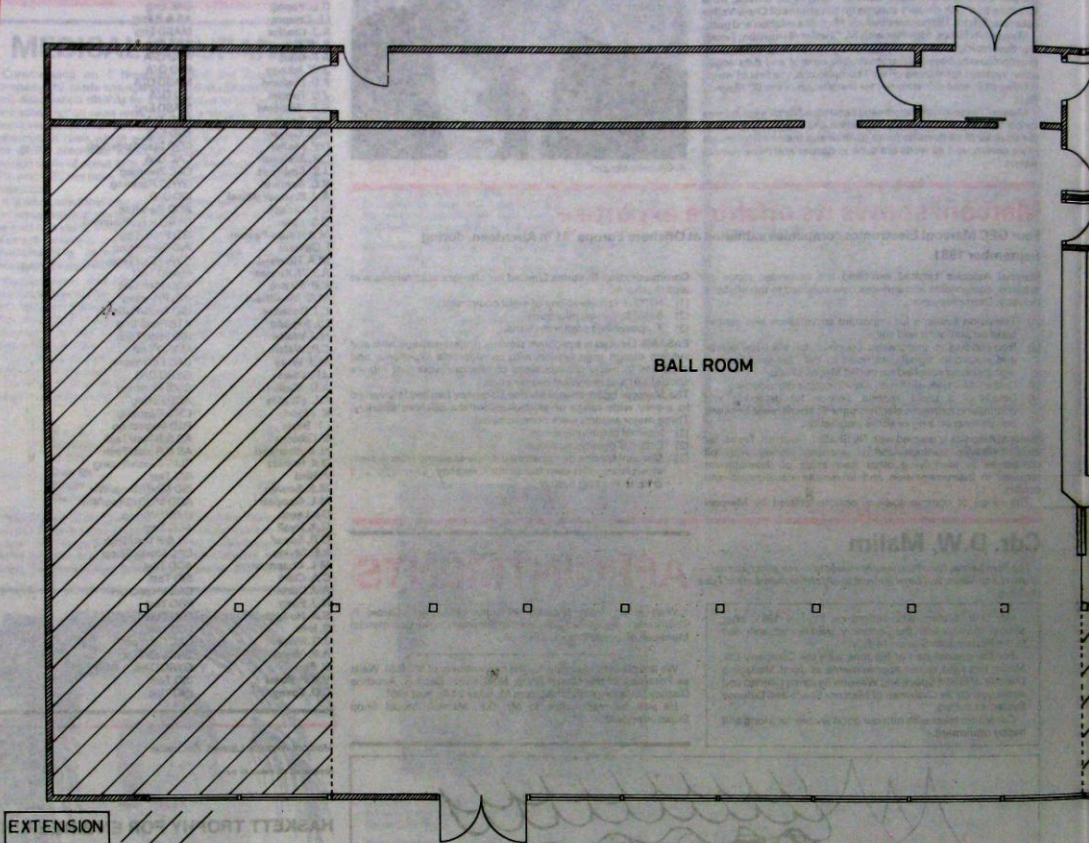
A written paper must be submitted to support the entry (six copies will be required for review by the adjudicating panel) and the entrants will be required to make a presentation of their entry to the panel.

The list of entries will be published on the Company Notice Boards in early December 1981.

Where practical, the winning entry will be submitted for publication in the GEC Journal of Science and Technology.

Further information about the competition may be obtained from J.M. News, Personnel Department. Entries should be made in the first instance through the Divisional Manager of the appropriate Division and should reach the Personnel Department by 27 November 1981. However, a final synopsis of the proposed entries should be submitted by 30 October 1981.

# ELLIOTT SPORTS FEATHERBY ROAD

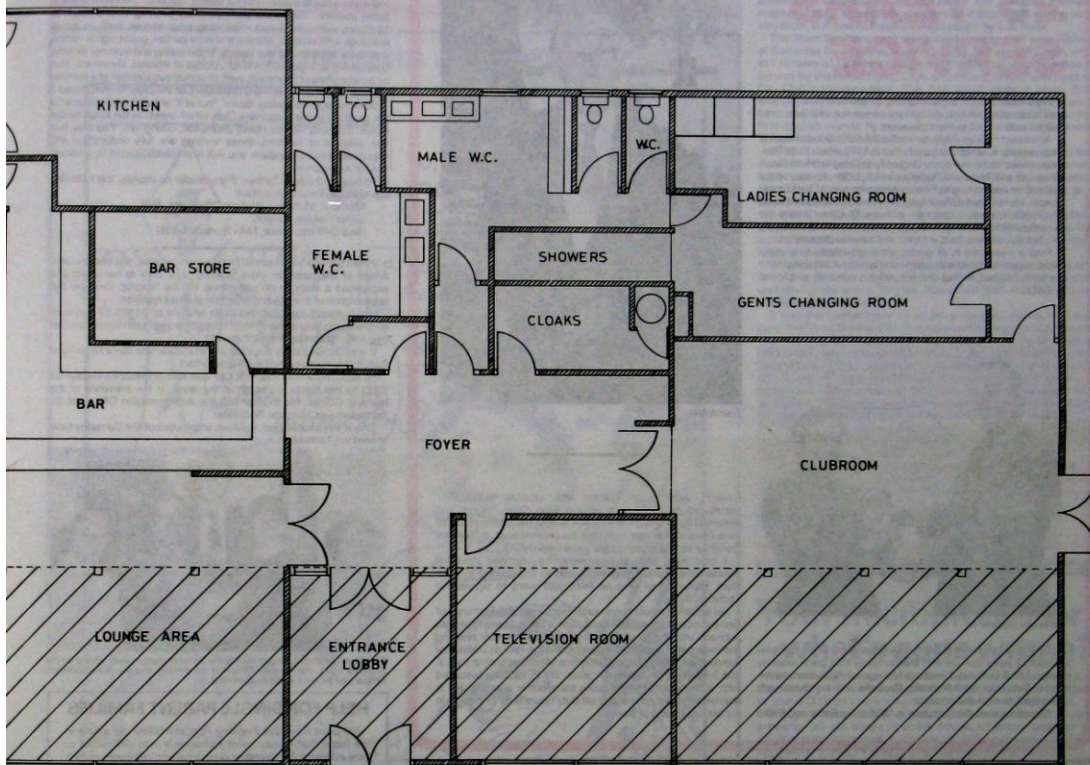


PLAN OF CLUBHOUSE EXTENSION

The long awaited, and oft discussed facilities provided at the club have been expected to take several months to complete but these can be quickly resolved and any inconvenience will be more than made up for. Briefly, the work consists of a new frontage providing more space for greater use at any one time with a lounge, club-room, lounge and television bar facilities. At present, care is needed

## & SOCIAL CLUB

AD, GILLINGHAM



ussed, extensions and improvements to the use have at last commenced. The work is to complete, meanwhile members are and tolerant. Difficulties will inevitably arise, and given goodwill and understanding, while than compensated at the conclusion. additions at the north end, with a levelling of ice. Internal re-arrangements will enable the out disturbing other events going on. For occupied, other organizations can be using the room and at the same time make use of the when entering the club-house, as new found-

ation work around the old entrance has caused a 'step' to be created and, when dark, this could cause problems, even though a lamp is focussed on the point.

The addition of some 40% of floor space will enable greater flexibility to be made of the facilities and is a worthwhile achievement considering the practical and technical difficulties, besides overcoming a very considerable human opposition to the scheme.

It is estimated that some £40 000 will be spent to give the members a club that they can feel proud of and use for their own pleasure and that of their friends.

The plans, as detailed above, may be subject to an adjustment and change during progress of the work. It is also possible that the completed building may look slightly different from that shown.

# RETIREMENTS

AS & R Division has lost one of its more colourful characters by the retirement, in June, of **Graeme White-Winchester**, the Progress Chaser who kept the main works divisions on their toes for supplies to AS & R.

Graeme came to the Company in June 1969 and joined the MAC Division in Stock Control. He went to AS & R in 1972 in Stock Control and then became the Progress Chaser on the inter-site run.

He came to Elliotts after being medically discharged from the RAF. As a member of the RAF he served in various parts of the world, with distinction, for a total of 32 years. The stations served at include: Abingdon, Stafford, Cranwell, Waddington, Oakington and Northolt in the UK and

overseas tours took in Canal Zone on two occasions, Abyssinia, Cyprus, Malta, Aden and Germany. Graeme was mentioned in despatches during the war whilst in Aden, he also received the AOC in C's Commendation in 1959 and in 1963 while serving at RAF Bruggen was awarded the MBE. On his retirement, Graeme had attained the rank of Warrant Officer.

He keeps in touch with the service by his membership of the committee of the RAFA, Maidstone branch. His son Michael is at present a third year apprentice with the Company and is in CACD Wiring. A real raconteur, he has a fund of stories with which to amuse his listeners and enjoys visiting country pubs, to sample food and drink.

# 25 YEARS' SERVICE

**Fred Ambler** who began working for the Company in 1956 has celebrated his quarter-century of service and was presented with a clock to mark the event.

At present he is an Inspector within AS & RD Goods Inwards Department, to which he transferred in 1972 when Fuse Division moved to Portsmouth. Originally starting work in Naval Weapons and Radio and Radar as an Inspector, he also spent some time commuting to Frimley where he was a Chief Storekeeper. He returned to Rochester, however, and became head of Goods Inwards Inspection in Fuse Division, where he became well known and made a large number of friends, being of a helpful, diligent, hard working and amiable disposition.

Fred is interested in all sports, although mostly as a spectator, except for his love of swimming which he still delights to perform. Married, he has one son, who is currently employed in CACD.



Fred Ambler



Malcolm Crucefix

One of the more unusual acknowledgements of the completion of 25 years' service with the Company took place recently when Mr. A.D. Eyers, Divisional Manager of IN Division, travelled to Bath to present **Malcolm Crucefix** with his chosen gift of a clock to mark the occasion.

Malcolm joined the Company in 1956 in the Radar and Radio

Division, working on ground and airborne radars. He transferred to IN Division on the Blue Steel Project and remained there until its completion before transferring back to Fuse Division. He later took over his present post, in Bath, as Development Engineer on site liaison with MOD.

A local man, born at Gravesend, he attended Whitehill Infants School until being evacuated to Trowbridge in Wiltshire. Returning to Kent he eventually went to Gravesend Technical School.

His industrial career began as an Electrician with Flemings of Gravesend and after a year he became a Trade Apprentice with Johnson and Phillips of Charlton, doing transformer winding and switchgear assembly. He served in the RAF as a National Serviceman, being a Ground Wireless Mechanic both in the UK and Singapore. On return to civilian life in 1955 he restarted with Johnson and Phillips doing transformer erecting. He is married with two sons and in off duty hours likes to indulge in his favourite game of bowls.

# Caring and Sharing

Life is full of surprises, some good and some not so good, some things to be forgotten and others to be recalled. There are good times and bad times, times of joy and tears, of success and adversity.

It appears that in the good, happy or successful phases there are always plenty of people around to share and add to the general goodwill. But what of the less happy periods and experiences? An old English proverb says 'Laugh—and the world laughs with you, weep—and you weep alone.' Why this should be is beyond human conception as when adversity strikes, it is then that help, assistance and friendship are more than ever necessary.

Within an organization, such as our own Company, there are many people who are forced by circumstances which overtake them to weep alone. This isolation and loneliness has occupied the thoughts and attention of many people who care and want to share and help the widows, widowers, divorced, separated and the single units. In an endeavour to take the loneliness out of the lives of employees within these categories we have looked around for ways to be of help.

A local organization to provide just that sort of friendship, helpfulness and assistance does exist and we wholeheartedly recommend it to any employee who falls within the list above.

The Gregarians Club is a Medway based association of people in need of friendship and comfort. It began 12 years ago, through the medium of the Evening Post, to provide a place for people to meet and enjoy a social event, without feeling 'out of it'—everyone is in the same position. They meet each Saturday evening from 8.00pm to 11.00pm with varied and interesting programmes such as social evenings with records, cheese and wine parties, guest nights—when members bring one or two guests. In the spring and summer months outings are arranged to the coast, places of interest, shows etc. Run by a committee of members, with an annual subscription of a nominal fee, the cost of any evening is dependent on the programme offered.

So when you are feeling 'down', 'out of it' or that nobody cares why not go along to the Gregarians Club, which meets at the King Charles Hotel, (formerly Aurora Hotel) Brompton, Gillingham. You may feel shy, reticent or hesitant—these feelings are fully understood and appreciated but once there you will find friends, joined by a strong cord of experience.

To help and advise further, if any reader so wishes, the following are available for you to contact:

- Mrs. E.C. McMillan, Welfare Officer (int. 450)
- Sister Gordon, Surgery
- Jess Griffiths, Editor, MAA News (int. 731)

When the late Iris (Daphne) Hyde was in hospital, she became very aware of the need for extra facilities. Just prior to her death she expressed a wish to do something for the hospital, to show her appreciation of the skill and attention she had received.

Her husband, Ken, decided to do what he could to fulfil that wish and, with the help of family and friends at work of both himself and his late wife, funds began to accumulate.

It was decided to try to gather a sum sufficient to buy a Kings Fund Bed, for donating to the Helen Lloyd Ward.

So successful was this, that Ken was able to present a cheque for £350 to the Sister in charge of the ward, in the presence of the Nursing Officer, his mother and the Administration Officer of St. Bartholemews Hospital, Rochester.

This is the second bed, in which employees of the Company have shared in its provision.



Ken Hyde hands the cheque over to the Sister in charge. His mother is on the extreme right, the Nursing Officer is on the left and the Administration Officer can be seen in the background.

# HELP FOR SINGLE PARENT FAMILIES

We print from the Evening Post the following article in the hope that it may solve someone's own difficulties or give a chance for devoting one's time and attributes to help another.

A labour exchange with a difference is being planned by a group of Medway divorcees and single parent families. Mums who are struggling to mend the kids' bikes or dads who are deluged by the washing and ironing will form a self-help pool of free labour.

The idea is the brainchild of Hazel Wastell of Rainham. It came to her the other day when she was struggling to mend a bicycle chain for her son Mark, nine. Since then she has mentioned the idea to several friends and they are helping her to get the scheme off the ground.

Called Exchange Services, the idea of the scheme is that labour could be swapped on an hour-for-hour basis.

An hour's help with the washing or ironing could be exchanged for an hour's help with household repairs or gardening.

"Labour charges are so expensive," Mrs Wastell said. "Only the other day it cost me £15 just to have a piece of glass put in."

"I think a lot of people could do with help in this way and save a lot of money."

"It was a spur of the moment idea, but since then I have told several friends, and they think it is a good idea."

"We are not aiming to make any money on this. We just want to help. It is unbelievable the number of things you need doing around the house."

"There must be lots of men who would like someone doing the washing or ironing, or maybe some help with babysitting the children while they are out at work."

Anyone who wants to join the scheme can contact Mrs Wastell on Medway 373366.

# OPPORTUNITIES

The development of land surrounding the Airfield is proceeding apace and several units are already occupied.

Among those so occupied is one by Remploy Limited, the commercial company which specializes in the employment of disabled people. They are located at 19 Laker Road (this runs

parallel with Maidstone Road), and are offering a shoe repair service at prices which we believe are very competitive, compared with those of the High Street. Below are details of the service available, prices as at 13.8.81.

## Shoe Repair Price List

### SEWN

Soling in leather and heeling in leather or rubber  
 Mens £3.68 Ladies £3.14  
 Soling only in leather  
 Mens £2.66 Ladies £2.58  
 Soling in rubber  
 Mens and Ladies £2.24

### STUCK ON

Soling in leather and heeling in leather or rubber  
 Mens £3.43 Ladies £2.79  
 Sole and heel in micro  
 Mens £3.43 Ladies £2.79  
 Through soling in leather, extra to soling  
 Mens £1.15 each shoe Ladies £1.15 each shoe  
 Heeling only in leather  
 Mens £1.02 Ladies 83p  
 Patches  
 Mens/Ladies 48p each

### Re-welting

Mens/Ladies 28p each shoe first inch. Each additional inch 22p per shoe  
 Stitching per inch  
 Mens/Ladies 7p  
 Rubber heeling only  
 Mens/Ladies 63p  
 Rubber heel tips (extra to heeling in leather)  
 Mens/Ladies 48p  
 Stick on sole (pair)  
 Mens £1.41 Ladies £1.20  
 Steel tips—sole or heel  
 Mens/Ladies 27p each tip  
 Heel grips (pair)  
 Mens and Ladies 47p

Items for repair can be left at the reception desk at 19 Laker Road. They are open for business 8.00am through to 4.30pm Monday to Thursday (incl) and 8.00am through to 3.15pm on Friday.

# England

HOLIDAY FEATURE

LET'S GO  
...AGAIN

'Let's Go', the English Tourist Board's free guide to off-season breaks is now available.

The book, which lists over 1000 hotels offering reduced rates in autumn, winter and spring for a stay of two nights or more, is now in its ninth year—an indication of the growing popularity of the short break with both hoteliers and guests alike.

The average price of a mini-holiday in 1981/2 will be £35 per person, which normally includes a room with private bath, English breakfast and dinner for two nights. Alternatively, some hotels give a daily allowance towards à la carte dinner and may include little extras such as complimentary sherry on arrival, theatre tickets, itineraries for local walks and drives and free entry to museums and discos.

The choice of hotels and locations varies from a Queen Anne country house in the heart of England and an old coaching inn in Hampshire, to a Georgian mansion near the North Yorkshire Moors National Park.

For active, sporting types 'Let's Go' identifies numerous hotels

with their own golf courses, swimming pools and facilities for riding, tennis and dancing.

The young at heart and romantic can opt for places with four-poster beds, candlelit restaurants with log fires and special honeymoon packages.

Many hotels offer reduced rates, or free accommodation for children sharing parents' rooms and, in some cases, even the family pet is welcomed.

The guide indicates clearly which hotels are suitable for physically handicapped guests, and the holly-leaf symbol marks those which organize special Christmas packages in addition to the usual mini-breaks.

'Let's Go' can be obtained free of charge by post from 'Let's Go', Hendon Road, Sunderland SR9 9XZ or a copy can be borrowed from MAV News Office.

## GOLDEN DAYS OF ADVENTURE Sheppey's part in aviation history

Much of the foundation for aviation was pioneered on the Isle of Sheppey, with Eastchurch and Leysdown being predominant in actual experimental work.

Among the magnificent men who worked from these villages were C.S. Rolls and Cecil Grace, who both died in a flying accident during 1910.

The first officially recognized flight by a powered aircraft was made by Lord Brabazon on 2 May 1909 (he became the holder of the first pilot's license) flying from Sheppey. Sir Winston Churchill was also taught to fly from Eastchurch.

Undoubtedly, the name that really puts this area on the aviation map is that of the Short Brothers, who set up an aircraft factory at Leysdown in 1909, producing six biplanes for Orville and Wilbur Wright, as well as their own designs, which superseded the brothers' manufacture of balloons. The Wright Brothers inspected their aircraft at Leysdown on 4 May 1909, during construction, and one of these six was bought by C.S. Rolls.

The Short Brothers were also manufacturing their own biplane at Batterssea by this time, a plane bought by Frank McClean, who in February of 1909 had bought the Shellness field at Leysdown, for use by the Royal Flying Club, and Mussel Manor was used as the Club's headquarters. The first Short biplane never flew though, and Number 2, (which was built at Leysdown) was used by Lord Brabazon to win the 1909 Daily Mail prize of £1000 for the first English man to fly an English plane for 1 mile over England. This was achieved on 30 October 1909.

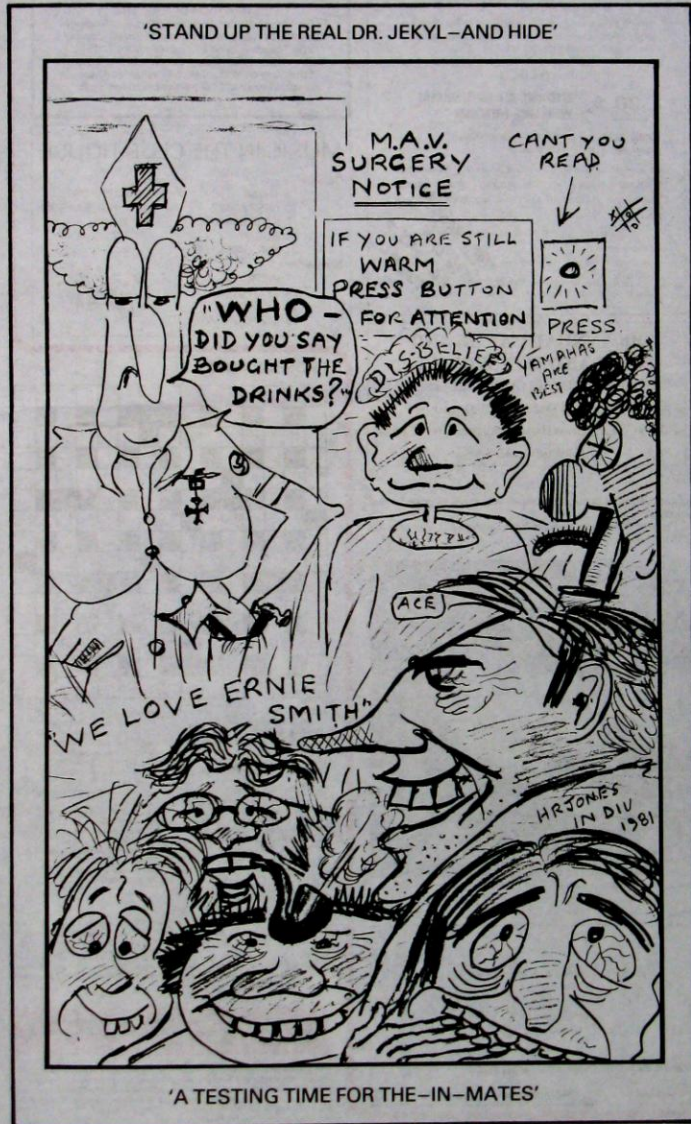
In 1910, the Royal Aero Club and the Short Brothers moved to a smoother field at Eastchurch and established a more permanent factory, and in 1911, C.R. Fairey, who founded the Fairey Aviation Company, joined the production team that later in the year produced the world's first twin engined aircraft.

It was Oswald Short who was the brainchild of the buoyancy bags which, adjoined to skids, allowed aircraft to land on the water, and therefore saved many pilots lives who would otherwise have crashed into the water.

Sheerness Docks was the scene for the first water landing and in 1912 Lt. Samson piloted the first aircraft to take off from a ship and land on the water. This was done from HMS Africa, anchored in Sheerness Harbour.

It was the furthering of these developments during 1912 that gave the Short Brothers the first seaplane though and Eastchurch was not suitable for a seaplane factory, even though Shellbeach was a relatively smooth sheltered water base. Thus, the company moved to Rochester, nearly all of the aircraft factory, and over 200 employees, leaving only Horace Short and a small factory at Eastchurch. Before dying in 1917 Horace, together with Oswald, developed the Type B twin float torpedo aircraft. With his death, Eustace and Oswald Short relinquished the Eastchurch factory and Sheppey's golden aviation days all but died and, although used by the RAF during World War II, German bombing raids finally wiped Eastchurch off the aviation map.

A stained glass window commemorates the lives of C.S. Rolls and Cecil Grace in Eastchurch Parish Church and a stone memorial stands opposite the Church, remembering the golden days of flight from Sheppey and the adventure and employment the new industry brought with it.



## Your microprocessor — what's gone wrong?

Your microprocessor can often become deprogrammed if accessed by a random analogue signal. It is not always necessary to spend £££s on a new 'chip' if you follow a few simple rules.

First you must establish a 'safe post' in a suitable part of your property—an old stable or coach house, no longer used for its original purpose is ideal, but any room with open aspect measuring greater than 2.71m square can be pressed into service.

Floors should be level and taken back to bedrock and a conductive mat of woven plastic NOT LESS than 2.72mm thick with a conductivity of 3000-10000 mho/s per piece laid.

Aluminium alloy to BS 1470, NS15TF can easily be fixed to a dining room table to make a work bench and taken to a common earth point.

Having set up your work station, remove the suspect microprocessor from the circuit board using a fine tipped soldering iron and place into the 'N' socket of the multi-purpose test set.

Check access time to all Read Only Memories (ROMS) against fetch and execute times for Write Only Memories (WOMS) using digital stop watch. They should be in ratio of 1:2. If fault lies here, bend all pins straight using tweezers and replace chip in P.C. board.

If ratio is correct, the fault is probably in the store, accumulator, register or CPU.

Set all flags to zero and 'feed in' binary signal 1101 1011, (hexadecimal DB) and flags should indicate 'logic 1'. If this does not happen SWITCH OFF at once, disconnect 5 volts from wall socket and retire to a safe distance. Consult expert advice or refer to your local H I F I dealer.

Finally measure all lines in address bus—if less than 2.4mm diameter, replace up to total 16. Do not try and multiplex data bus yourself—this needs specialist equipment.

When all tests are complete—resolder into system using 60/40, reprogramme all volatile Programmable Random Access Memories (PRAMS)—plug into TV screen, replace space invader cassette into slot and switch on.

John B.

# Sports and social club round up

## '65 CLUB

The members of the '65 Club, have participated in a full and varied programme over the past few months and many new members have been welcomed into the club.

In April the entertainment was provided by the City Way Stage Show, a group of young people who gave a varied programme of songs and dances etc. For the May meeting, the Vice Chairman, Mr. C. Rhodes, gave an interesting photograph slide show which depicted the highlights of a recent holiday. For entertainment in June, members looked to Gali and Ross (Mr. Gali of Phoenix Tootin' Company and Mr. Ross of CMS) a popular vocal duo, they were much appreciated. July saw a special arrangement, when the members were able to join in the Diamond Wedding Anniversary celebrations of Mr. and Mrs. Syd Vaughan. There was a sherry reception, with a special cake, and a presentation of a pot plant (*Chrysanthemum*) by Mr. Bert Snowwell as we all sang 'My Old Dutch' suitably adapted.

This was followed by the first part of a general knowledge quiz to find the 'Supermind of '65'. The August meeting saw the concluding heats and finals of the quiz. Mrs. Bert Mulford came out a clear winner and became the first holder of the Supermind Trophy. (Mr. A.E. Mulford was formerly in FCD as Assistant Chief Inspector).

The remainder of the year will consist of:

**September** - Produce show and cake competition

**October** - The Wallace collection

**November** - Elliott Concert Brass Band

**December** - Christmas party - Arthur Brown and his Boys

During the summer two outings have been enjoyed. In June two coach loads visited Thorpe Park - near Staines and Guildford Cathedral. On 19 August, through the generosity of Marconi Avionics, over 100 people visited the Shire horse establishment at Maidenhead and afterwards at Windsor. Both visits were appreciated and enjoyed with reasonable weather on each occasion although rain came on when leaving Thorpe Park, in June, but had ceased on our arrival at Guildford.

## Competition - issue 35

This proved to be a popular competition but only one competitor succeeded in correctly answering all nine words, while three successfully answered eight. The first prize goes to Mr. G.E. Moorcroft, Head of Technical Publications, ATE, who receives £5. Of the three runners-up Mr. S. Armstrong, MA, was first out of the bag and therefore received the £3 prize. The remaining two entrants, who had one incorrect answer each, received £1, they are: Rob Petts, I/O Cost and Budget C. Speiser, ADD Engineering

The correct result is:

1. FACETIOUS
2. RHYTHMS
3. PUSHCHAIR
4. CATCH PHRASE
5. STRENGTHLESSNESS PERVERSELESSNESS
6. BOOK KEEPER
7. SEQUOIA
8. FLOCCINAUCINIHILIPILIFICATION
9. BEADED-EDGE, CABBAGE-BED, FACE-BEDDED or BEBEDDED, BEDEFAED, CABBAGED, DEBAGGED and DEBADGED

A thank you to all other unsuccessful competitors. The lowest number of correct answers was five. We look forward to you taking part in future competitions.

## ELLIOTT PHOTOGRAPHIC SOCIETY

Elliott Photographic Society began their 1981/82 season with an open evening on 30 September in the works canteen. There was cheese and wine, a display of club members work and for anyone wishing to try their hand at portrait

### Extracts from 1981-82 programme

#### October 7

Camera Formats for the beginner; to help you choose the film size and format you need for what you want to do.

#### November 18

Police Photography both great and gruesome!

The local Derby - a slide battle with the Tovil Club

#### January 13

Portrait evening - we're hoping that Heather and Kim will keep our shutters and pulses clicking!

#### February 17

Durst is coming to demonstrate their superb enlargers and other colour processing equipment. We hope to see a colour print produced before our eyes.

#### March 13

We are sharing the evening at Maidstone with the KCO Camera Club. The talk is on a Safari with some super equipment by Leitz.

#### April 12

Photax are coming to tell us about their lighting equipment.

#### May 19

Everybody is going to do it in Mote Park!

All interested personnel are asked to complete the form below.

### Elliott Photographic Society

NAME: ..... ADDRESS: .....

TEL. HOME: ..... WORK: .....

DIVISION (if a Company member) .....

I wish to attend meetings on the following basis:

\* As a paid-up member. \* Still trying to decide. \* I am likely/unlikely to come to the Christmas Dinner (approx £8)

\* As an occasional visitor. \* Lecturer. \* Please delete where inapplicable. When completed return to B.E. Paxton, ISD.

\* No way!

## BADMINTON CLUB

The new season started on 4 September at the Casino Sports Hall in Maidstone Road, Chatham. New members are urgently needed, to increase playing strength and to spread the club interest and activity. The match playing season starts shortly and new members joining now will have an opportunity of getting the feel of things before the fusties begin.

Meetings are held on Friday evenings each week during the season at the Casino Sports Hall, at 7.00 pm and on Monday evenings at the same time at Walderslade Girls School during term time.

For more information, contact any of the following: John Dher (AS & R) int. 975, John Catford (PSD) int. 738, Geoff Johns (MSSD) int. 257, Sandy Johnson (Fisher) int. 344, Colin Marshall (FARL) New Road Tel. 44433 ext. 42.

## SPECIAL INSURANCE SCHEME FOR MEMBERS OF THE ELLIOTT SPORTS & SOCIAL CLUB

UP TO 25% DISCOUNT OFF MOTOR INSURANCE PREMIUMS

LOYDS SECURITY FIRST CLASS POLICY NO CLAIMS BONUS FREELY TRANSFERABLE OTHER USUAL DISCOUNTS E.G. LIMITED DRIVING, VOLUNTARY EXCESSES

### ALSO!

\* 20% DISCOUNT OFF HOUSEHOLDERS INSURANCE PREMIUMS

LOYDS SECURITY 'NEW FOR OLD' COVER EXTENSIVE POLICY COVER UNBEATABLE VALUE

WE CAN ALSO HELP WITH ALL YOUR INSURANCE REQUIREMENTS E.G. HOLIDAY & TRAVEL, ALL RISKS, ACCIDENT, LIFE AND PENSIONS AND INVESTMENT BONDS. WE ALSO HAVE MORTGAGE POLICIES AVAILABLE.

FOR QUOTATIONS OR FURTHER DETAILS PLEASE CONTACT: GRIEM'S BLAIR LTD. BLAIR HOUSE, 72 SPIRAL ST., DARTFORD, KENT. TELEPHONE (01323) 72151

*(Branches in Colchester, Epping, Thurrock)*

\* Not available for properties in London Postal Areas

## 4th ANNUAL CAROL AND GIFT AND TOY SERVICE

in Gillingham Baptist Church, Green Street

Monday, 14 December 1981 (prov)

Elliott Concert Brass Band, Christmas Tree, Carols

Full details in later issue

## ELLIOTT SOCIAL CLUB Children's Parties

Saturdays 28 November and

5 December 1981

Children of Elliott Social Club Members from the age of 1 day to 14 years are entitled to a present, but only children from the age of 5 years to 12 years of age are eligible to attend the parties.

Surnames in alphabetical order:

A to Z 28 November 1981

7 to Z 5 December 1981

1st Party Boys - green tickets

Girls - yellow tickets

2nd Party Boys - blue tickets

Girls - pink tickets

These tickets must be presented on receipt of a present

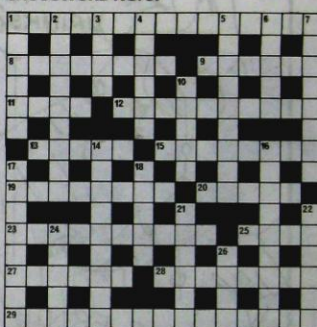
DISTRIBUTION OF PRESENTS

For children not attending the parties, distribution of toys will be made in the main canteen on Monday and Tuesday, 7 and 8 December from 12.15 to 1.20 pm. The Elliott Social Club would like to point out that only children of parents employed here are entitled to attend the parties or receive a gift.

## MUSIC IN THE CLUB-HOUSE

October	December
3 THYME	5 HAPPY DAZE
10 HAPPY DAZE	12 KINGS RANSOM
17 STANTON BAND	19 THYME
24 AJRA	26 - CLOSED -
31 KINGS RANSOM	
November	
7 INCROWD	
14 22 CARAT	
21 SPIRAL	
28 STANTON BAND	

## CROSSWORD NO. 37



- ACROSS**
1. A full day (6,4,5)
  8. Molar without eight (3,5)
  9. Section of contract or regulation (6)
  11. Anger of a sort (4)
  12. On the south bank, or country town (6,4)
  13. The GI's vehicles (5)
  15. Refers to a particular period (8)
  16. A flammable saint (8)
  20. African ruminant animal (5)
  23. Frothy substance of autumn (6,4)
  25. What you make in chess (4)
  27. You are when at sea (8)
  28. Neither hot nor cold (8)
  29. Hobson's choice: its your decision (4,2,3,2)
- DOWN**
1. Not practices, but basic (8)
  2. It lasts through winter (4,5)
  3. A city of old or weight (4)
  4. It measures depth (6)
  5. A flower of height (9)
  6. Flashy part of palate (5)
  7. It helps solve this (8)
  10. An ancient art of furniture maker (5)
  14. Musical or literary melody (3,6)
  16. Spying (9)
  17. We should know, our goods go in it (8)
  18. A person or act, to improve (5)
  21. By sight (6)
  22. Note of authorisation (8)
  26. Girl's name

### SOLUTION TO CROSSWORD No. 36

**ACROSS**  
1 Private Bill, 9 Boob, 10 Vista, 11 Nail, 12 Traders, 13 Clients, 15 Term, 17 Urth, 18 Niece, 21 Stump, 23 Crop, 24 Pony, 27 Barner, 28 Cramped, 31 Mean, 32 Awee, 33 Dot, 34 Rank and file.

**DOWN**  
2 Rabid, 3 Vivarium, 4 Toss, 5 Beadle, 6 Lance, 7 Cowie, 8 Tictac, 14 Adore, 16 Memoranda, 18 Imp, 20 Aparitif, 22 Travel, 25 Natio, 28 Newark, 29 Model, 30 Caen.

Photographs taken by the Staff Photographers will be entirely judged in the following way: (A) Alan Kaska, (B) Linda Jones, (C) Reg Hunt and (D) Alan Marshall.

The views and opinions expressed by contributors are not necessarily those of the Editor or Company. Any such opinion or comment are those of the contributor alone and are printed solely as a matter of interest. Produced by the Publicity Dept. GEC Machines Limited, Bradford for Marconi Avionics Limited, Kent and printed by John H. Hirst & Company Limited, Cuckfield, Yorkshire.