

Stay safe this winter



AVIONIC SYSTEMS

BAE SYSTEMS

www.rochesteravionicarchives.co.uk



FOOTWEAR

During the winter months, with the possibility of snow and ice the Facilities Team will be making every effort to clear the snow and ice from roads, paths and walkways. Whilst gritting and snow clearing assists in reducing the slip hazard, consideration must also be given to appropriate footwear. High heels, trainers and fashion shoes must be avoided in preference to good walking shoes or hiking boots. Wearing the right footwear will help to reduce the possibility of you slipping and injuring yourself.

Walking to and from work

Apart from the obvious, that is to wear warm clothing and appropriate footwear, consider wearing Hi-Visibility clothing. Each year the SHE Department runs a Hi-Viz Campaign at the end of October providing a limited number of Hi-Viz vests with the proceeds going to charity.

For more information on Hi-Viz please contact Cindy in the SHE office on (+791) 3436



PREPARE YOUR CAR

Below are a few things to check before you start your journey:

- Tyre condition should be checked, (inc. the spare) for pressure and legal tread depth.
- Check oil and water levels.
- Check you car has the right amount of anti-freeze in the cooling system.
- Check all exterior lights are working and remember to keep the lights clean.
- Consider the option of air conditioning when buying a new car. This can be useful in winter, as in summer, to help demist your vehicle quickly and reduce condensation.

Consider carrying the following in your car during the winter months:

- A good tow rope.
- A high quality torch with spare batteries.
- A spare fuel can.
- Mobile phone, money or phonecard for emergencies.
- A good can of de-icer and a windscreen scraper.
- A warning triangle.
- A first aid kit.
- Fire Extinguisher.
- Good walking shoes.
- A shovel.
- Blanket.
- A high energy drink (non alcoholic).

TRAVEL ROUTES ON SITE

The map on the back of this leaflet shows those areas that will be cleared during adverse winter conditions i.e. heavy snow and ice. During such conditions employees should where possible travel on the internal walkways of the buildings. In heavy snow conditions the towers and south car parks will be closed, only the main 8-acre car park will be cleared and kept open.

Travel

When travelling by car consider options other than driving, such as public transport. If the car is your only option consider car share.

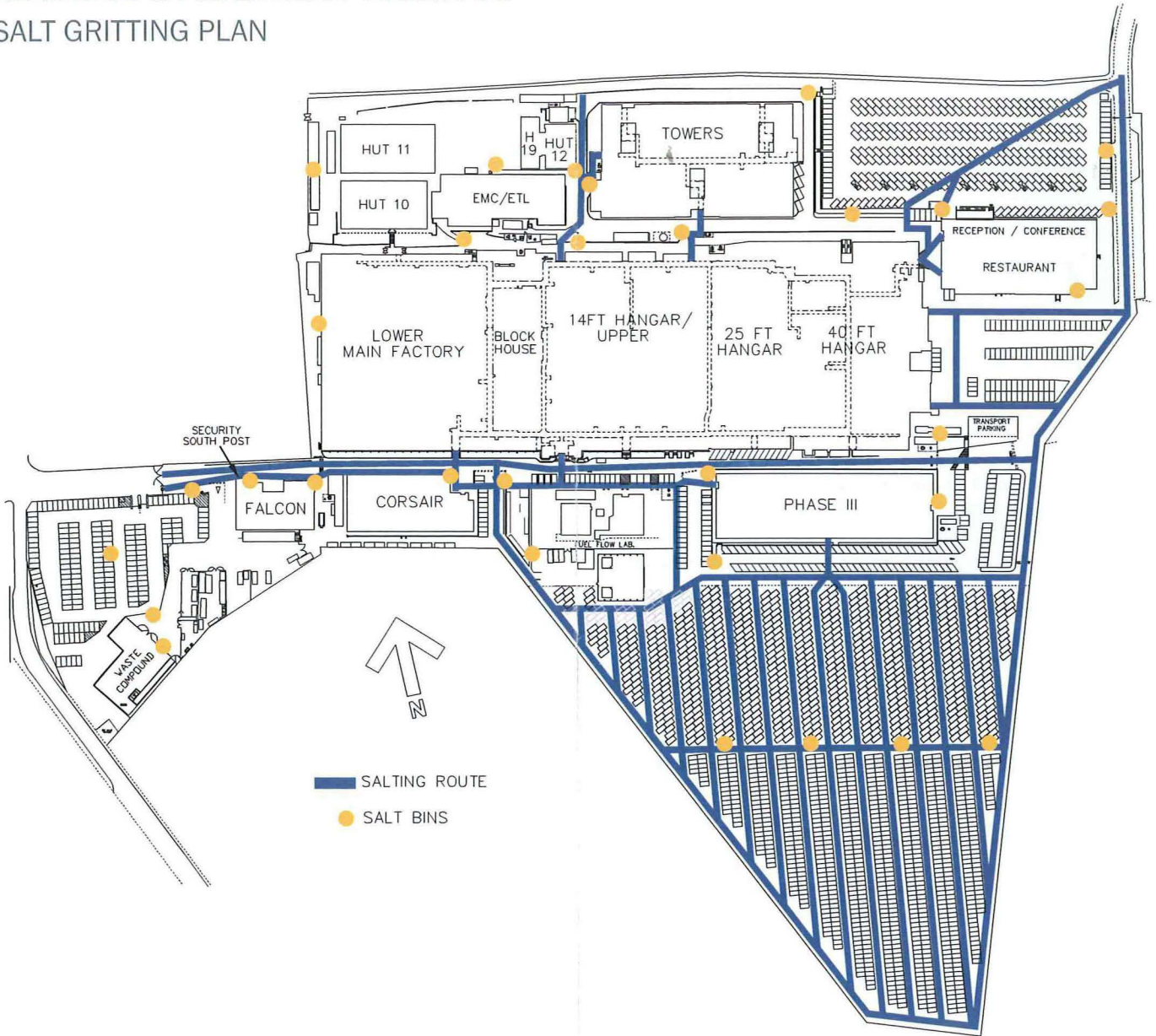
For more information on car share visit <http://www.liftshare.org>

kentcarshare

Always allow extra time for your journey.

ROADWAYS & PEDESTRIAN WALKWAYS

SALT GRITTING PLAN



— SALTING ROUTE

● SALT BINS

BAE SYSTEMS
Electronics and Integrated Solutions
Airport Works Rochester Kent ME1 2XX United Kingdom
Telephone +44 (0) 1634 844400 Fax +44 (0) 1634 827332
www.baesystems.com

AS9293 10_05