

GEC AVIONICS

# T2A

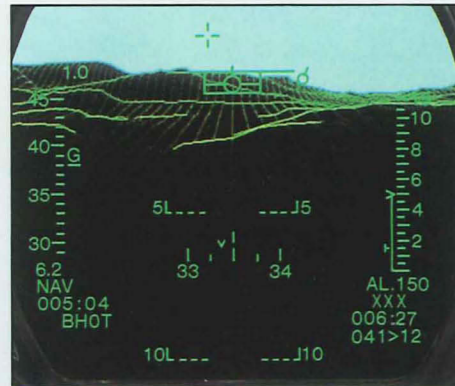


**Total Terrain Avionics**

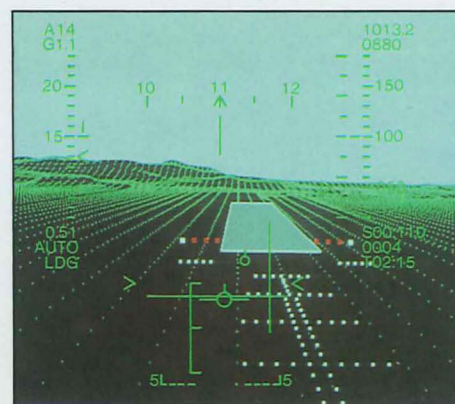
**where there is  
no room for error**

## Cockpit Facilities

The Pilot Low Altitude Terrain Overlay (PLATO) generates a synthetic image of the terrain ahead from its on-board data base. This perspective display can be viewed on the Head Up Display to enable passive terrain following flight or to enhance a FLIR picture.

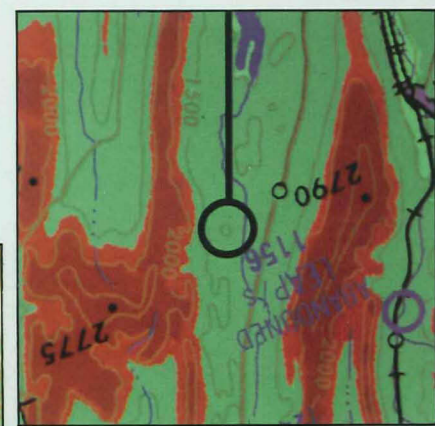


Approaches to rough field or highway landings can be enabled by use of computer generated graphics. The digital data base can also provide glide path information.



The tactical Video Map Display features:

- Smooth display scrolling and rotation
- Variable zoom
- Lookahead/slew modes
- Selectable map orientation
- Declutter facility
- Mission data overlay
- Threat overlay
- Relative altitude shading
- Night/day colour palette selection
- Pseudo-radar for covert operations



Development and Production Contract:

The Royal Air Force has chosen GEC Avionics' Digital Video Map Generator to equip its Night Attack Harrier GR.7.

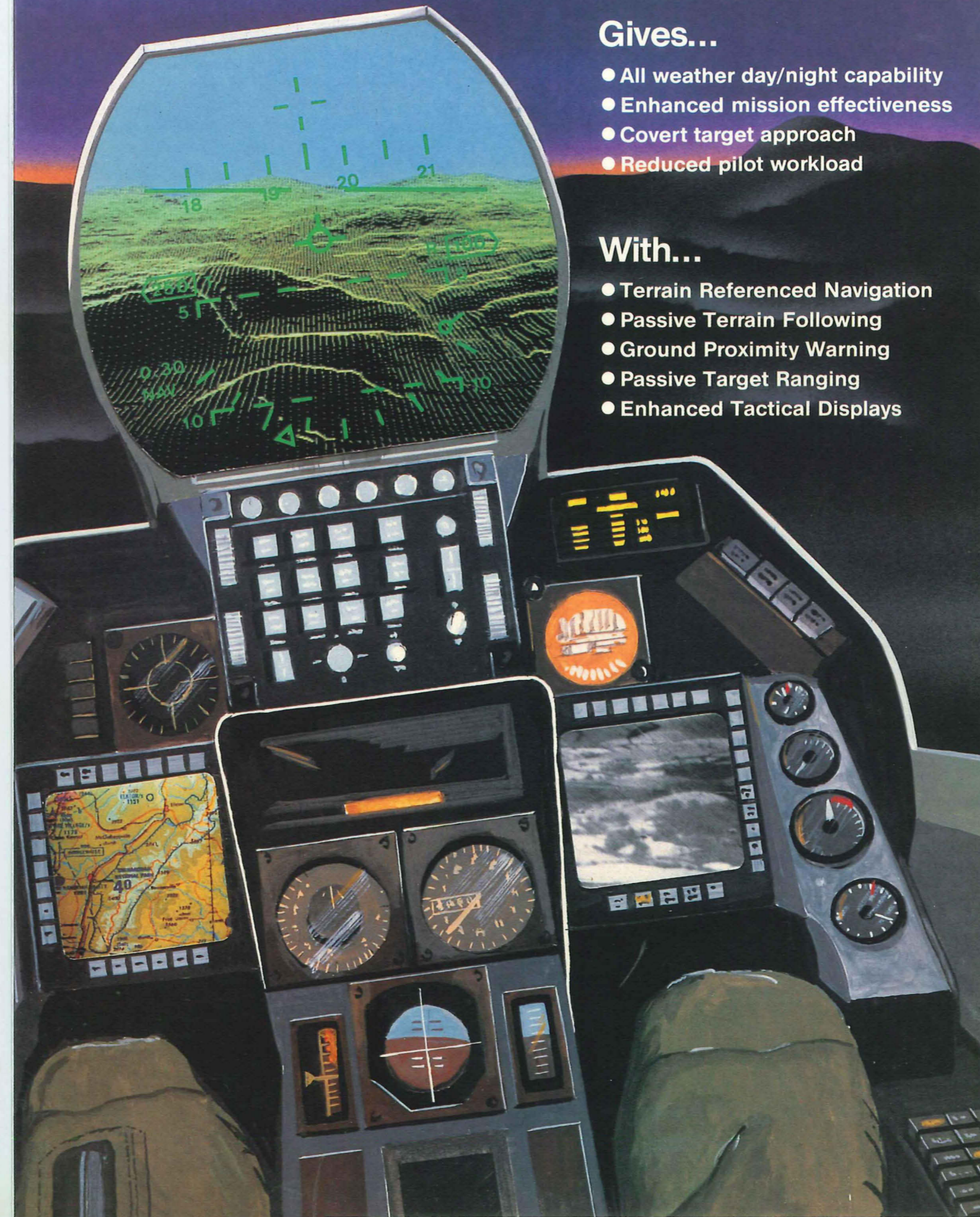
## 24 Hour Stealth Operations

Gives...

- All weather day/night capability
- Enhanced mission effectiveness
- Covert target approach
- Reduced pilot workload

With...

- Terrain Referenced Navigation
- Passive Terrain Following
- Ground Proximity Warning
- Passive Target Ranging
- Enhanced Tactical Displays



## Flight Trials

**Total Terrain Avionics (T<sup>2</sup>A)** is an integrated system utilising a central on-board digital data base. This data base holds terrain, cultural features, low flying obstructions, intelligence and mission data. Access by a wide variety of user subsystems is coordinated by a data bus management system and high speed bus.



Tornado photograph: Crown Copyright/A&EE  
Boscombe Down



The **Total Terrain Avionics** system is flying in a number of fixed wing jet aircraft and helicopters both in the United States of America and in the United Kingdom.



For more information on **Total Terrain Avionics** Contact:

Guidance Systems Division,  
GEC Avionics Limited, Airport Works,  
Rochester, Kent, England.  
Telephone: Medway (0634) 44400,  
Telex: 96333 GECROC G,  
Facsimile: (0634) 827332



# T2A

*when surprise  
means success*

GEC Avionics Limited is the avionics subsidiary of the General Electric Company plc of England, the United Kingdom's largest electrical and electronics company.

We are Europe's leading producer and exporter of aviation electronics, supplying the world's most demanding markets, notably the USA, with high technology systems. These serve seventy nations worldwide, at sea, on land and in the air.

**GEC AVIONICS**

GEC Avionics Limited  
Guidance Systems Division

Airport Works Rochester Kent England  
Telephone: Medway (0634) 44400  
Facsimile: (0634) 827332  
Telex: 96333 GECROC G

