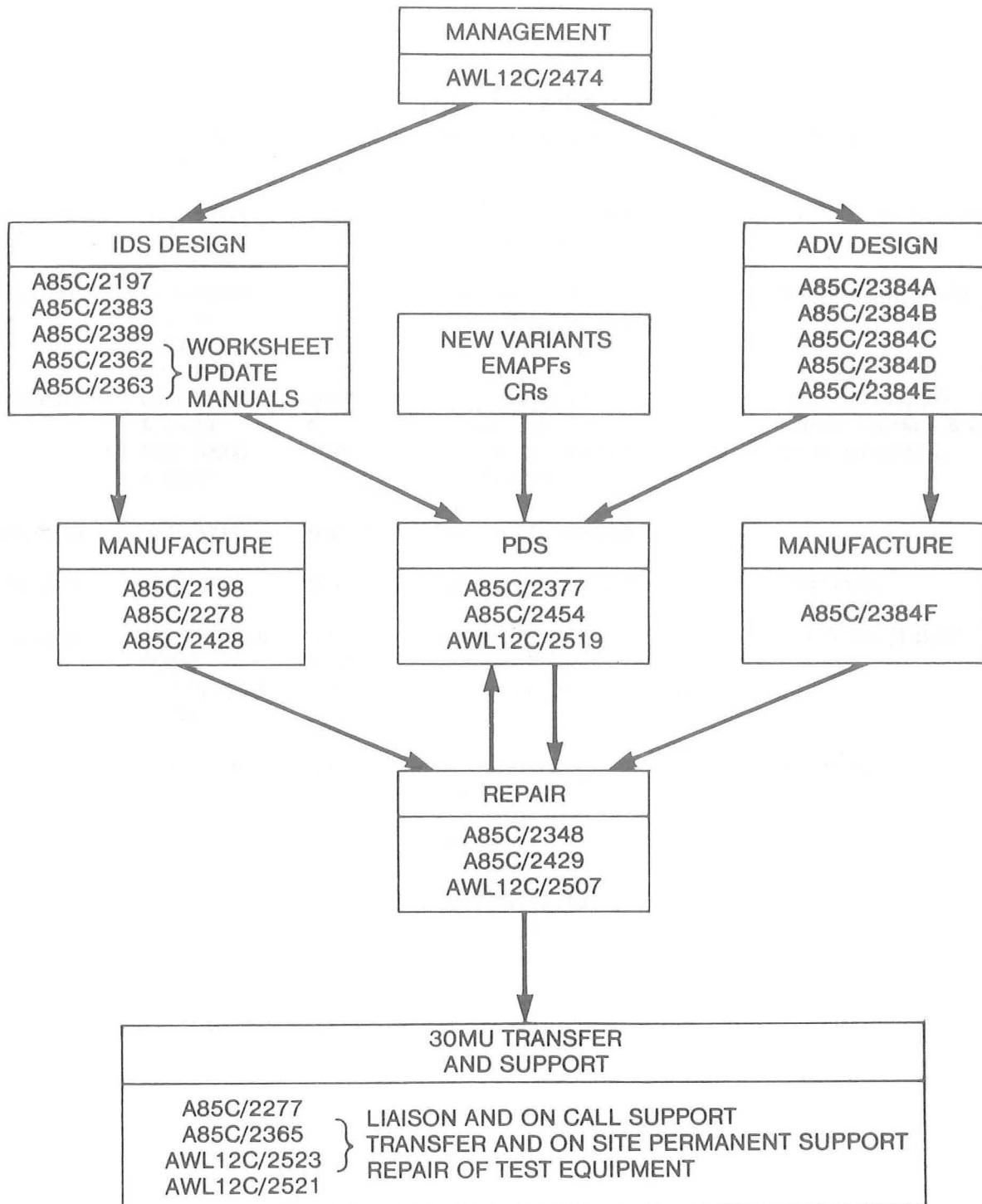
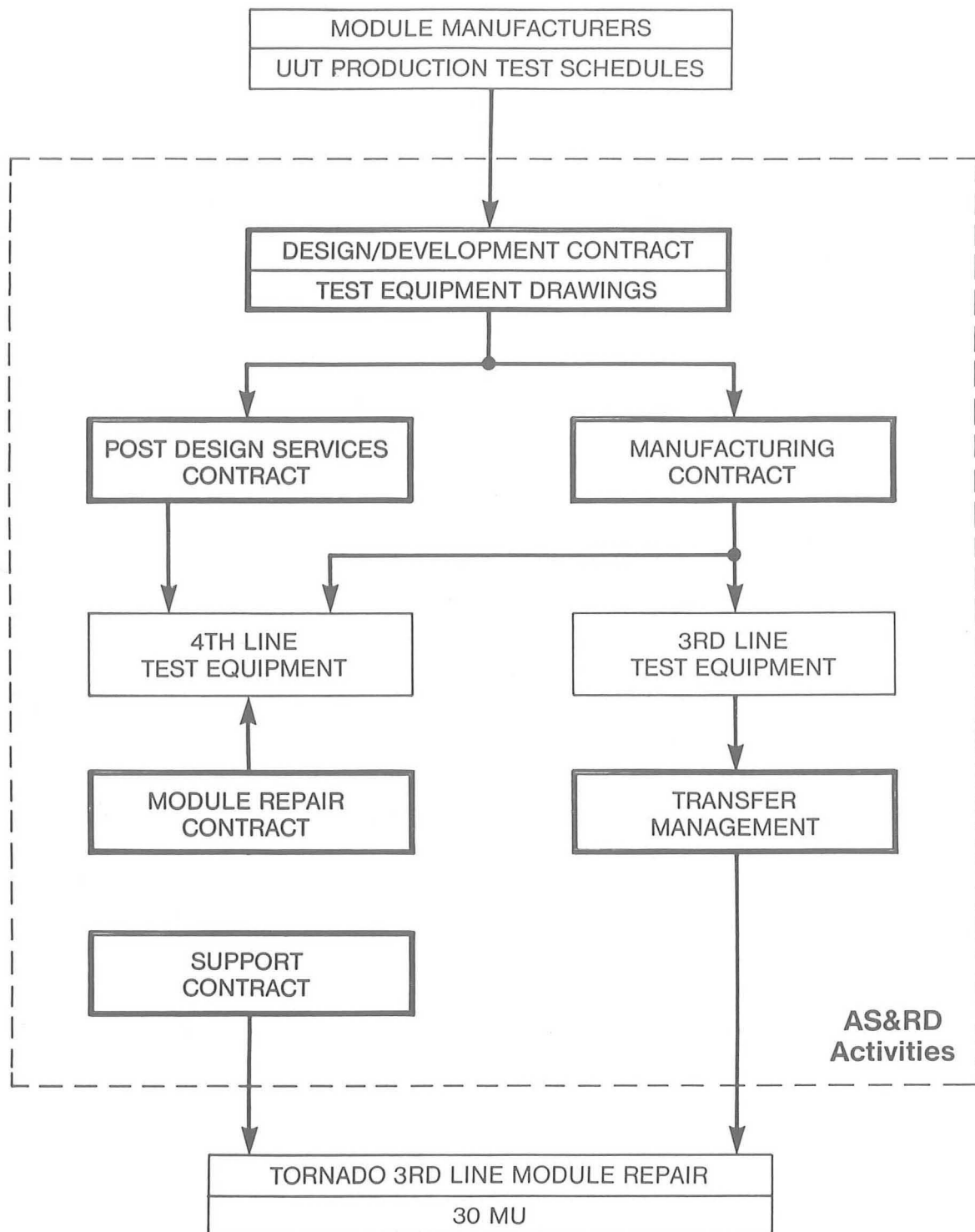


ASRD Tornado Module Support Facility Contracts



AS&RD Tornado Module Repair Dedicated Support Facility



Subject Module Manufacturers

Rochester Divisions

Division	Equipment	% of Modules
CACD	AFDS, CSAS PITCH, SPILS, CSAS POS Tx	32
ADD	TV TAB, EHDD, E SCOPE	30
ISD	SMS, TTU	20
PSD	FUEL FLOW	1
TOTAL		83%

European Manufacturers

Manufacturer	Equipment	% of Modules
BGT	CSAS (LAT), CSAS POS Tx	9
AEG	TV TAB	4
SEL	SMS	2
AERIT	AFDS	1
TEL	FUEL FLOW	1
TOTAL		17%

MOD TORNADO CONTRACT HISTORY

Design & Development Contracts

A81A/1640	B277/11000 (Series)	SC53	Design & Development of Tornado 3rd Line Repair Facility	1.03.79 to 31.3.83 Outstanding work transferred to 2197
A85C/2197	G277/12800 to 12859	SC53	Design & Development of Tornado Repair Facility	1.04.83 to 31.08.86
A85C/2366	G277/84020	SC53	Design, Development & Modification of AS & RD A T S	Closed. Cost cert submitted 19.08.87
A85C/2383	G277/12860	SC53	Design & Development of Tornado Repair Facility (follow-on to A85C/2197)	1.07.85 to 31.03.87
A85C/2384 A to E	G277/84021 to 84026	SC53	Design & Development of Tornado A D V Test Equipment	22.11.85 to 31.12.86
A85C/2389	B277/82011	SC43	Design & Development of AS & RD ATS Adaptor	
AWL12C/2474	G277/83178 to 83182	SC53	Management of Tornado DRF	1.04.87 to 31.03.88

MOD TORNADO CONTRACT HISTORY

Test Equipment Manufacture Contracts

A81A/1745	B277/12100	SC53	Supply of Equipment for Tornado Sub-System Repair Facility	Closed. Items not completed Transferred to 2198
A85C/2198	B277/12950	SC43	Supply of Equipment for Tornado Sub-System Repair Facility	Closed for addition of extra item
A85C/2278	B277/12960	SC43	Supply of Equipment for Tornado Sub-System Repair Facility	Closed for addition of extra items
A85C/2428	B277/80796	SC43	Supply of Test Equipment (IDS)	
A85C/2384F	B277/80793	SC43 ?	Supply of Test Equipment (ADV)	

MOD TORNADO CONTRACT HISTORY

Repair Contracts

A81A/1883	B277/80599 to 80617	SC53	Tornado Sub-System Repairs	Completed
A81A/2028	G277/83035 to 83053	SC53	Tornado Sub-System Repairs (follow-on to A81A/1883)	Completed
A81A/2159	G277/83077 to 83096	SC53	Tornado Sub-System Repairs (follow-on to A81A/2028)	Completed. Cost cert submitted 16.12.87
A85C/2348	B277/82002 & 82003	SC43	Tornado Sub-System Repairs (follow-on to A81A/2159)	1.04.85 to 30.06.86 (feed-in)
A85C/2429	B277/80785 & 80786 & 80787	SC43	Tornado Sub-System Repairs (follow-on to A85C/2348)	1.07.86 to 31.03.87 (feed-in)
AWL12C/2507	B277/80807 & 80808 & 80809	SC43	Tornado Sub-System Repairs (follow-on to A85C/2429)	1.04.87 to 31.03.88 (feed-in)
AWL12C/2521	B277/80814	Def 127	Tornado 3rd Line DRF T/E Repairs	1.04.87 to 30.04.88 (feed-in)

MOD TORNADO CONTRACT HISTORY

Spares Contracts

A81A/1904	B277/80587	Def 127	Supply of T E Spares & Spares in aid of repairs	Completed
A85C/2234	B277/80714 & 80725	Def 127	Supply of TE Spares & Spares in aid of repairs (replacement for A81A/1904)	Closed for addition of extra items
A85C/2378	B277/82005	Def 127	Supply of FF Tx Test Jig	Completed
A85C/2399	B277/82010	SC43	Supply of Spares for DRF 3rd Line Test Equipment	Closed for addition of extra items
AWL12C/2566	B277/80826	Def 127	Supply of Spares for DRF 3rd Line Test Equipment	

MOD TORNADO CONTRACT HISTORY

Miscellaneous Engineering Contracts

A85C/2266	G277/84000 to 84005	SC53	Modification of Tornado DRF	09.01.84 to 31.03.85 Cost Cert Submitted 23.03.87
A85C/2277	G277/12900	SC53	Transfer Liaison & On-Call Support	5.01.84 to 31.10.89
A85C/2362	G277/84014 to 84017	SC53	Master Work Sheets Update	3.05.85 to 31.10.87
A85C/2363	B277/82004	SC43	Preparation of Test Equip Manuals	15.05.85 to 30.9.87
A85C/2365	B277/82009 & 80794 & 80795	SC43	Transfer of DRF & Provision of Tech Rep	1.7.85 to 31.10.87
A85C/2377	G277/84018 & 84019 B277/82006 & 82007	SC53 & SC43	Modification of Tornado DRF (follow-on Contract to A85C/2266)	Cost cert raised Feb 88 (Items 1 & 2 only) To be submitted.
A85C/2385	B277/82008	Def 127	Sealing of Drawings	
A85C/2414	B277/82012	SC43	Ranging and Scaling	Completed
A85C/2454	G277/83154 & 83155 B277/80773 & 80774	SC53 & SC43	Modification of Tornado DRF (follow-on to A85C/2377)	1.4.86 to 31.3.87
AWL12C/2519	G277/83174 & 83175 B277/80805 & 80806	SC53 & SC43	Modification of Tornado DRF (follow-on to A85C/2454)	1.4.87 to 31.3.88
AWL12C/2523	B277/80815	SC43	Transfer of DRF & Provision of Tech Rep	1.11.87 to 31.10.88