

BIG INVESTMENT BOOST FOR RUGBY

"We have invested heavily to modernise our manufacturing facilities in order to maintain our position in the forefront of world electrical machine production" — Bob Willford

A new, £1M-plus test facility for electrical machines was opened at the GEC factory in Mill Road, Rugby, last month by Lord Nelson of Stafford, chairman of the company.

Lord Nelson said it was part of a £16M investment programme on the 180-acre Rugby site.

Orders being worked on at Mill Road include one worth over £20M for the largest hydro machines ever built in this country.

WON

These are destined for the Dinorwic pumped storage scheme in Wales.

Other orders cover large electric motors for a new steelworks in Brazil, a tyre factory in China — and within the last few months an order has been won for generators to power the air conditioning in the Royal Palace at Riyadh in Saudi Arabia.

BY TOPIC CORRESPONDENT

Bob Willford, managing director of GEC Machines in Rugby, told *Topic* after the opening ceremony: "We have invested heavily to modernise our manufacturing facilities in order to maintain our position in the forefront of world electrical machine production."

"It is a highly competitive market in which you need to fight hard to survive and prosper."

MODERN

"New facilities include an air-conditioned, temperature controlled,

dust-free coil factory which is essential for modern manufacturing techniques; plus new flame cutting, machining, assembly and test areas."

INCREASING

The test area, he said, could be used for testing all types of rotating electrical machines to most national and international standards.

It will be able to accommodate an increasing volume of production and a greater diversity of products.



SMILING KAREN PEPPARD, left, is just one of the many teenagers whom GEC is helping to gain an insight to the realities of working life. In conjunction with local schools and the Manpower Services Commission, Karen is receiving training in the restaurant of GEC Thorne. See page 8 inside for full story of how GEC is helping other youngsters in their careers and how it is helping to improve the liaison between schools and industry.

APPRENTICES TO THE RESCUE OF MINI TRAIN

BY TOPIC REPORTER

VISITORS to the Children's Railway at Aberdour, Scotland, will once again be able to go for a ride on one of the miniature trains — thanks to the Cowdenbeath branch of GEC-Elliott Control Valves.

CLOSED

At the beginning of the year, it was announced that the railway would have to be closed down, because no one could be found to do the necessary repairs on the trains.

IDEA

And that's where GEC came in. General manager at Cowdenbeath, Tom Gour-

lay, thought it would be a good idea if the apprentices at the factory did the work needed on the trains.

INVOLVED

The main two apprentices who were involved in the work on the engine were John Hamilton and John McCullough.

Others involved were Willie Henderson; Charlie Davis; Brian Fotheringham and Jim Haine.

Supervising the boys were George Clark, training officer, and Keith

Davis, deputy training officer.

Present to receive the train on behalf of Dunfermline District Council was Ian McIntyre, the area parks superintendent.

ABSORBING

The apprentices found the project educational and absorbing and were particularly pleased at the interest shown by the whole Cowdenbeath work force.

PROUD

They were particularly proud to note that GEC's railway building activities are no longer confined to the "heavy boys" at GEC Traction, Paxman, Ruston and so on!



Lord Nelson of Stafford, chairman of GEC, during the recent opening of a new £1M test facility for electrical machines at Mill Road, Rugby. This is part of a £16M investment programme at the Rugby site.

COLETTE Ryan, the woman engineer whom GEC is sponsoring to carry out work for the VSO in Zaria, Nigeria, has settled into her challenging West African life-style.

She reports that the job is going very well.

After a brief period

COLETTE CONQUERS NIGERIAN CHALLENGE

lecturing African students studying the Community Development Assistant's course. Colette is spending the summer break — the Nigerian rainy season —

planning and estimating the costs of proposed community buildings.

It is her aim to standardise the present variety of plans which exist for

market stalls, dispensaries and other local buildings.

With one design for each building-type, Colette hopes that repetitive construction will lead to

improved craftsmanship.

At the end of the wet season — November — Colette hopes her drawings will be put into immediate action.

On the social side, her life is also very hectic. She has joined the local polo club and says, that being single, there is no shortage of eligible young men!

PRODUCT DAY IS A BIG SUCCESS

THE first ever "Products Day" at the Satchwell Sunvic plant in Motherwell was a fantastic success with more than 750 people — employees, relatives and friends — turning up on a recent Saturday morning to see the factory, how it works and what it makes.

There was free tea and cakes and ice cream — plus hundreds of balloons for the children.

They let them off in the grounds of the plant and they flew away all over Scotland. A prize will be awarded to the child whose balloon travels furthest.

At the moment the leader is a balloon which was found 100 miles away in Angus!

COMPETITION

The workforce's kidney machine fund was increased by £35 as a result of donations. A bottle of whisky which was raffled for the fund was won by Anne Kerr. Mr Tom Ehoff guessed the number of nuts in a jar and won a hair dryer.

A free competition to guess: (1) the size of the company's plant; (2) how many homes have a Satchwell product; (3) how many products the company makes each year; and (4) how many quality control checks are carried out on the company's TLX thermostat, resulted in four prize-winners.

First prize was a port-

By TOPIC

SCOTTISH

CORRESPONDENT

able TV, won by Daniel Scott. Second prize, a GEC cassette recorder, was won by R. M. Watson. Third prize, a radio, went to Miss L. J. Gunn. And fourth, a bottle of whisky, went to C. Fordyce.

INVOLVE

Incidentally, the answers were: (1) 29 acres; (2) fifteen million homes; (3) four million products, and (4) 114 quality checks.

Managing director Gerry Walsh said beforehand that the idea was to involve the workforce in everything the company does.

"By holding an open day we feel we can spread knowledge about the company to an even greater degree," he said.

The company's own shop, selling a wide

variety of GEC products, was open for business and did a roaring trade.

IMPORTANCE

Satchwell Sunvic employees make very good use of this facility, and it is interesting to note that the shop has the highest turnover of any GEC employees' shop.

With its vital importance as an employer for the people of Motherwell, Bellshill, Hamilton, East Kilbride and other towns and villages in Lanarkshire, Satchwell Sunvic believe that the public at large should learn more of just what the company does.

Millions of households in Britain contain products made in the Motherwell factory.

LARGEST

These largely consist of temperature and appliance controls — devices like energy regulators, oven thermostats, and cooker timers, all used in electric cookers and boiler thermostats.



Hopeful faces watching their balloons fly away. So far 100 miles is the record distance travelled.



An inquisitive young visitor checks out every nook and cranny during a tour of Satchwell Sunvic's Motherwell plant in Scotland.

Over 750 people turned out to see the factory, how it works and what exactly it makes.

The common verdict was — a very successful "Products Day". Hopefully there will be more to follow.

GEC GAS TURBINES of Whetstone near Leicester has been awarded contracts to supply ten mobile power stations to customers in the Middle East and South America.

The value of the orders is in excess of £18.5 million.

URGENCY

As a result of an urgent need to extend the Guyana Electricity Corporation's generating capacity, GEC Gas Turbines is presently shipping two complete mobile power stations to the Corporation's Kingston power station site at Georgetown.

To meet the urgency of demand the Company had the machines ready for shipment in only four weeks from the date of the order.

INTENDED

It is intended that the mobiles be re-located, in approximately two years' time, on the Corporation's new Garden-of-Eden site, 24 kilometres from Georgetown.

SECOND

The company has also secured a contract to supply eight mobile power stations to the Riyadh Electric Company in Saudi Arabia. This is the second awarded to the company by the Riyadh customer in the space of two years.

CARNIVAL DAY FOR MARYPORT

MARYPORT Carnival was held in July and once more GEC-Elliott Process Instruments entered a float.

ACCOLADE

Winning second prize, it was "third time unlucky" for GEC-EPI Maryport, having been "pipped at the post" by another local company. However, the float was awarded a "Best in Carnival" accolade.

BOWLING

The GEC-EPI Maryport Queen, Miss Cheryl Howard, and her six attendants had an enjoy-

able day as did the huge crowd.

● Maryport Sports and Social Club held its annual bowling competition in June at the Bounty Inn. Despite competition from Lewisham visitors, the trophy was won by Maryport's maintenance section.

RECORD

This again proved a successful event, with the 'Bounty' full to overflowing.

Just for the record, 'Ray's Tensions', the management team, were eased out in the first round.

NORTH SEA ORDER

A contract, valued at around £1.3 million, has been placed with Marconi Marine, a GEC-Marconi Electronics company, by BP Trading Limited for the design, supply, installation and commissioning of a complete telecommunications and entertainment system on the Buchan Oil Production Platform in the North Sea oilfield.

AN order worth over half a million pounds has been placed with the Mobile Radio division of Marconi Communication Systems, a GEC-Marconi Electronics company, by Hotpoint, also a member of GEC.

The contract, for a nationwide radio communication system between service engineers and area service depots, was won in open competitive tender and is believed to be one of the largest single commercial orders for mobile radio equipment ever placed in the

UK.

It is unusual for a national system to be ordered in its entirety instead of developing over a period of time.

MEMORY

Nearly 900 service engin-

ers will be linked by over 50 base stations to 41 depots via radios installed in their vehicles. The radios will be used to pass information to and from field service engineers and service offices.

The schemes will be con-

trolled from 41 depots each using a suitable version of Marconi's new remote control equipment, the display of which will be fitted with a memory store.

Should more than one mobile transmit, or the station be temporarily un-

attended, the vehicle identities will be stored until recalled by the operator.

Repeated transmissions from a single mobile will be identified by the unit to prevent overload of the store.

It is expected that the complete system will handle up to 10,000 message exchanges a day, and is calculated to make savings in telephone charges, man-hours and fuel.

The scheme was planned by the Service Division of Hotpoint in conjunction with Marconi engineers and was based upon trials at Chelmsford.

NATIONWIDE RADIO SYSTEM ORDERED BY HOTPOINT

GEC HELPS SLASH HOUSEHOLD FUEL BILLS

DRAMATIC energy savings have been achieved in a unique application of domestic central heating controls produced by GEC's Satchwell Sunvic of Motherwell.

Fifty houses in the North East of England have benefited from a combination of Satchwell controls selected by a specialist installer acting on his own initiative.

To date, energy and cost saving in some of the houses, built by J. Moody of Whickham, has been as much as 28 per cent against fuel bills previously incurred by occupants in their former homes.

UNUSUAL

Satchwell Sunvic, Britain's largest manufacturers of domestic central heating controls, has completed a detailed study of the systems carefully installed and co-ordinated by D. Macfarlane & Son, heating installers of Whick-

Mrs Win Cornish operating her kitchen control panel.



ham... and the company feels that the trade in general will be interested in this unusual, energy-saving application.

Taking one 12-room house as an example, the company discovered that the owners requested a selective and controlled

heating system with reliability and flexibility to meet the needs of the whole family and their varying pursuits — study, recreation and hobbies.

STRESSED

Employing as the linchpin of the system the *Daily Mail* award-winning Satchwell Sunvic electronic programmer, the installer designed a control panel situated at the client's request in the kitchen.

The Satchwell Duoflow system was used in conjunction with a number of 2-port motorised valves giving individual zone control to all rooms.

Downstairs rooms are controlled by Satchwell TLX room thermostats,

and bedrooms and sports room via switches on the control panel alongside the electronic programmer.

The occupant, Mrs Win Cornish, stressed her wish to be able to switch on or off heating in individual rooms, as required, from her kitchen.

And the electronic programmer divides the 24 hour day into 12 different time periods thereby offering her much greater selection of programmes for central heating and domestic hot water than is possible with existing electro-mechanical programmers.

The Cornish family have already experienced a drop in fuel bills.

For one quarter, in their previous semi-detached home, the bill was much

larger than for the first quarter in their new, 12 apartment home.

Theirs was the first house in the area to have the system installed. Their experience persuaded other homeowners to follow suit.

D. Macfarlane & Son stress that they specified Satchwell Sunvic controls in preference to others, from experience.

ENGINEER

"Reliability is essential, the programmer is more advanced than all others and there is greater flexibility in incorporating it in various systems, omitting outdated priority systems," they say.

"The whole scheme was backed by advice and help from Satchwell's sales engineer Graham Curtis."

PAULA STRIKES GOLD AT EDMONTON



PAULA Fudge, a member of the quality department at Marconi Space and Defence Systems, Frimley, carried off the Gold Medal for the ladies 3000 metres at the Commonwealth Games in Edmonton.

Paula went on to the European Games where she set a new British record for the 3000 metres, although she did not appear among the medals.

MSDS commercial manager, David Mallett, deputising for the general manager, presented a bouquet and a celebratory bottle of champagne to Paula, marking her triumphant return from Edmonton.

PEOPLE at Paxman Diesel's Colchester site were saddened to learn of the death of their colleague Nigel "Nick" Asherwood.

Nick had been a braille shorthand typist in the buying department at Colchester for 27 years.

His death at the age of 45 brought to an end a total of 190 years service from the Burrell and Asherwood family at Colchester.

Redring. The number one choice for instant showers.

You will find a Redring Instant Shower easy to use and beautifully elegant. Just right for you and your bathroom. And now you can choose from two models.

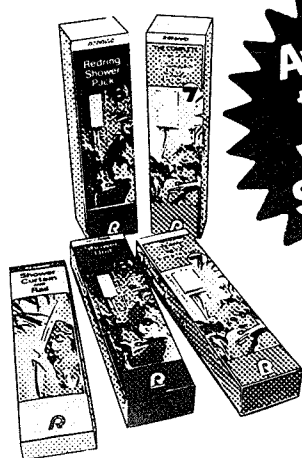
The compact Redring 6—with patented tap control for easy adjustment of temperature and flow, and the magnificent new Redring 7 with its four heat settings plus separate flow control, which offers you a choice of cool exhilarating showers or the most exquisite warmth.

And there's no water tank to re-heat, so your daily shower costs less than two pence.

High quality Redring Showers are superbly made, supremely safe and fully guaranteed and they come complete with fittings ready to install. So you won't find better value. In fact you simply couldn't have a better shower. Look for the bright red or blue Redring Packs—or send the coupon now. You will soon be showering in luxury Redring the No.1 choice for instant showers.



Available through your GEC Staff Shop.



REDRING

Redring Electric Limited, Redring Works, Peterborough PE2 9JJ.

HEAVENS ABOVE! ANOTHER SATELLITE COUP FOR MARCONI

BY TOPIC
REPORTER

MOTOR INSURANCE 25% REDUCTION IN BASIC RATES!

OFFERED BY LLOYDS UNDERWRITERS
FOR ALL

GEC GROUP EMPLOYEES

(Excluding Persons Living in N. or S. Ireland)

PETER BATEY LIMITED

228 Gulson Road
Coventry
Tel: 26081

122 Hillmorton Road
Rugby
Tel: 76321

Established Insurance Brokers for 30 years

B.I.B.A. Member

NAME AGE

ADDRESS

OCCUPATION

R/NL DATE PRESENT Co.

NCB Yrs. Full/Prov Yrs

Make Model

Capacity Value Year

* Comp/TPF&T/TPO. * £25 Vol. X/S Yes/No

Any Driver Over Yrs. Self & Wife/Self Only

Any Accidents or Convictions Yes/No †

Resident in UK. For 3 yrs. Yes/No †

Any Physical Defects Yes/No †

Any Drivers Under 25 Yrs. †

† Please Supply Full Details on Separate Sheet.

MARCONI Communication Systems of Chelmsford, a GEC-Marconi Electronics company, has formally handed over the new Goonhilly 4 "earth terminal" to the Post Office.

Designed for use with the next generation of communications satellites, the terminal was built as a joint-venture project with the Department of Industry, the Post Office and MCSL.

Virtually all the equipment is of Marconi design and manufacture.

PROVE

Goonhilly 4 has involved Marconi in a comprehensive development programme, the outcome being that the company can now offer complete satellite communication terminal systems in the 11/14GHz band for Intelsat V and for ECS systems.

Goonhilly 4 will be initially used with Europe's Orbital Test Satellite, OTS2, (forerunner to the European Communications Satellite, ECS) which was launched on May 11 1978 to prove the technology for digital satellite communications in the 11/14GHz frequency bands.

RECORD

The results of the OTS test programme will be particularly relevant to the 1980s when 11/14GHz operation will be used for the European and other regional satellite communication systems and for international services via Intelsat V.

MCSL has a long record of achievement in the technology and construction of communication satellite earth terminals.

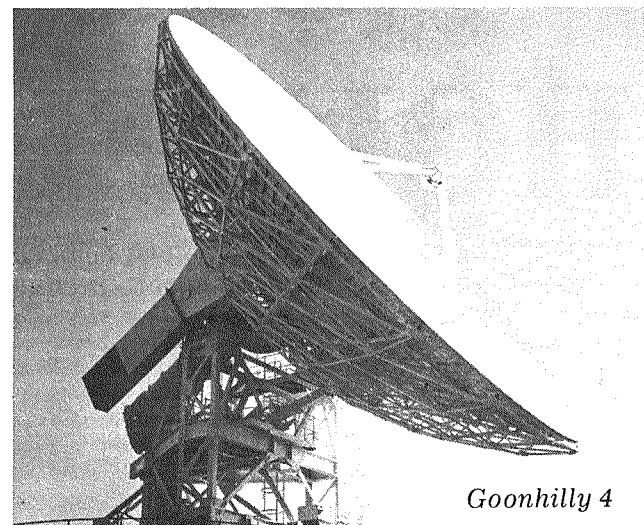
COMPLETE

For the Post Office, the company designed, equipped and commissioned the 30 and 32-metre 4/6GHz Intelsat stations at Goonhilly 2 and 3 and a new large Intelsat station in

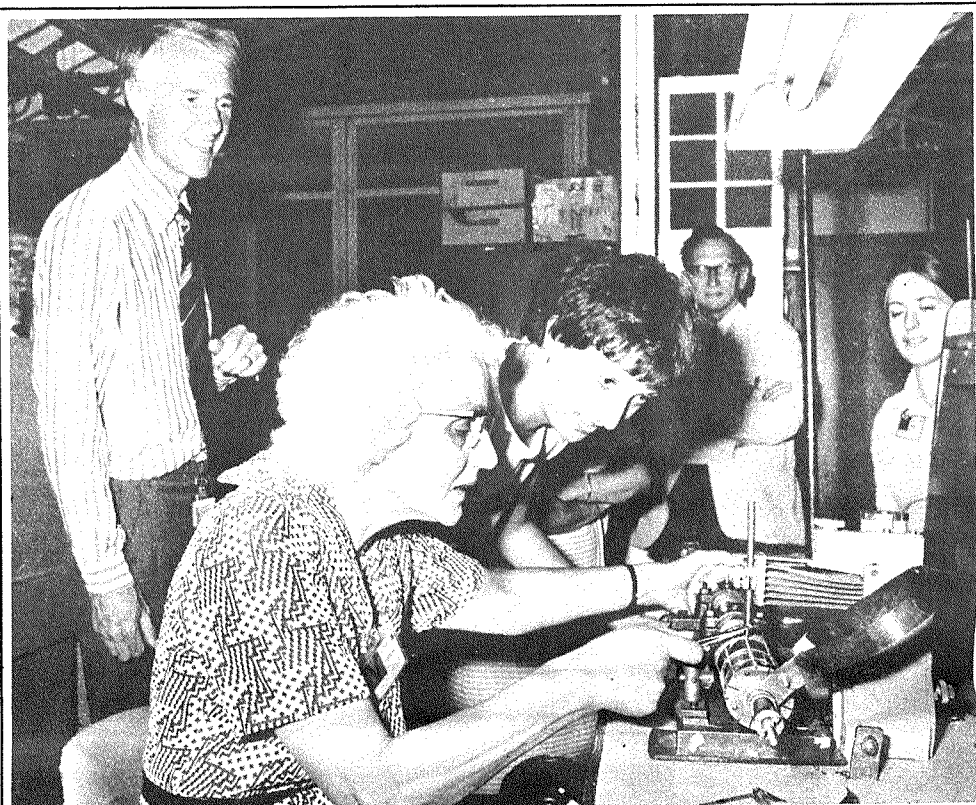
Madeley is nearing completion.

For Cable and Wireless, it has built 30-metre stations in Bahrain, Hong Kong (2), Kenya, Jamaica, Trinidad, Barbados and the Apollo station on Ascension Island.

It remains the only British company to have supplied complete civil communication satellite earth stations.



Goonhilly 4



School governors and science teachers from Chelmsford's Rainsford School recently visited English Electric Valve to see for themselves something of the company — and training opportunities available to young people.

During their visit they had the opportunity of talking to employees concerned with the construction of large valves used in broadcast transmitters.

Also included in the tour was a visit to the production area where colour television camera tubes are made.

OPPORTUNITIES

Afterwards, there was a general discussion on training opportunities for school leavers.

The picture above shows, left to right: Dr Peter Foreman, manager, large valve sec-

tion and also industrial adviser to the school; Mrs Betty Dale, governor/teacher, trying her skills on the work of winding and welding a power valve grid, assisted by EEV's grid assembler, Miss Alison Jameson with Mr David Dale and physics teacher, Mrs Vera Scovell, looking on.

Winegartens-the Jewellery & Ring Centre of the City

No misleading slogans or vaunted offers—just quality merchandise, honest-to-goodness value, personal service and expert advice that inspires confidence.

Winegartens concentrate under one roof in their vast showroom building a greater display and choice of Rings, Watches, Jewellery, Silverware, Crystal, Cutlery, Clocks and gift ideas than you are likely to see or find contained in a score of shops anywhere in town.

20% cash discount to all members of GEC

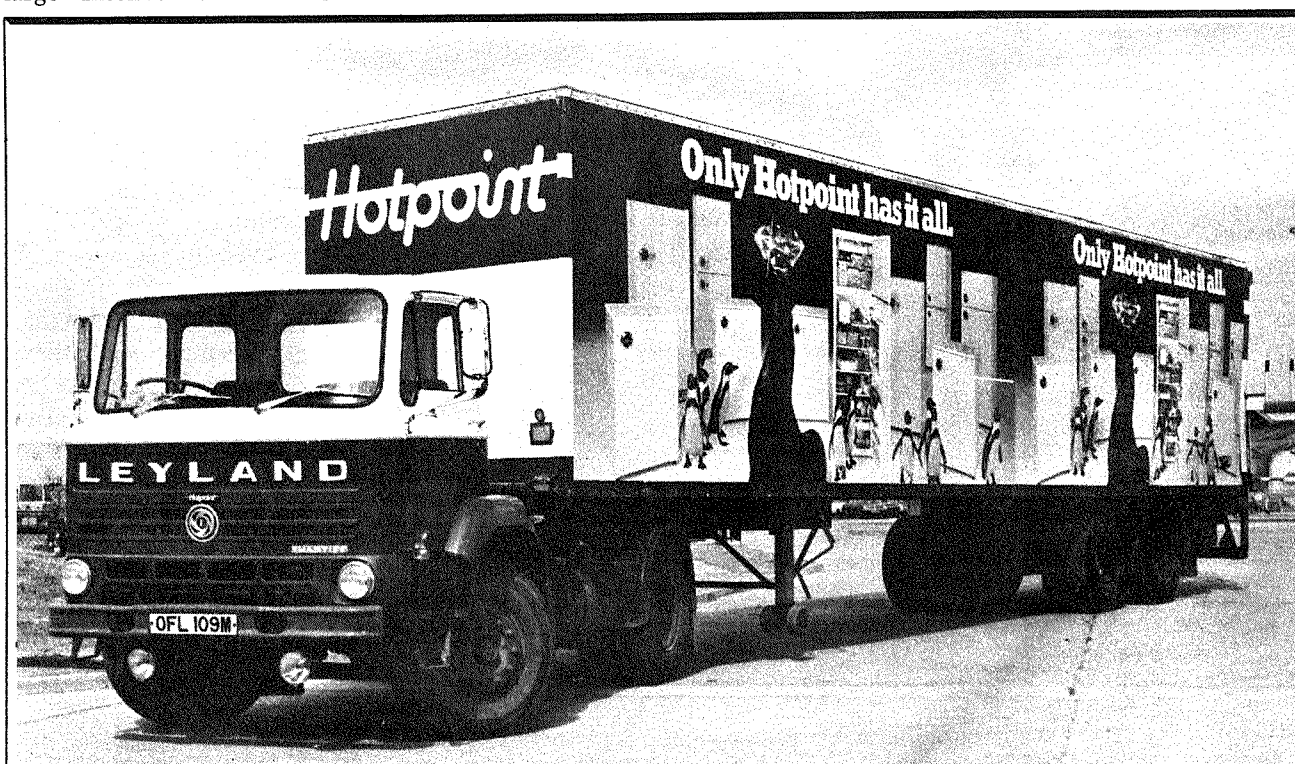
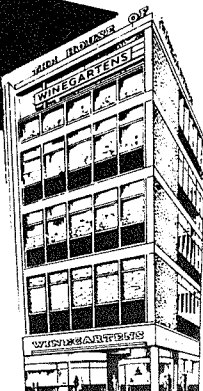


PERSONAL SHOPPERS
A detailed Hours of Business leaflet is available on request.
ORDERS BY POST
Write or phone for catalogues—please state goods you require.

Winegartens

186-190 Bishopsgate London EC2M 4NL
Tel: 01-283 6622

Hours: Oct: Mon Tues Wed — 9am to 6pm
Thur — 9am to 7pm. Fri — 9am to 3pm. Sats & Oct 2, 3, 11, 16, 17, 23, 24 closed all day.



Pictured here is the giant Hotpoint "moving trailer" posters, launched to combine with Hotpoints largest concentrated advertising campaign which starts this month.

The 500 transporters carry posters bearing the well known Hotpoint Iced Diamond Range of fridges and freezers in colour with the slogan "Only Hotpoint Has It All."

Forty-eight sheet posters are needed to cover these moving bill boards, which travel throughout the United Kingdom, a novel and original approach to visual advertising.

They assist the retailer by promoting the Hotpoint range to the consumer in an excitingly different way while still maintaining a fast and efficient delivery service.

RUSSIAN GAS LINK — WALSALL WINS A SHARE

WALSALL Conduits, GEC's West Midland-based electrical manufacturer, is supplying flame proof equipment for a massive 600-mile natural gas pipeline in Russia.

The pipeline will link the Siberian Tyumen gas fields with Chelyabinsk in the eastern Urals.

Fire protection engineering for the £130 million project is being carried out by John Kerr & Company (Manchester) Limited and the entire scheme is being undertaken by an Anglo-American consortium, Coberrow, which consists of Cooper-Bessemer, Rolls Royce and Willbros Overseas.

REPUTATION

Walsall flame proof junction boxes and switch assemblies are being used by John Kerr as part of the fire protection equipment in the compressor modules and gas treatment skids which are located along the 600 mile pipeline.

A spokesman for John Kerr said that the choice of Walsall equipment was very much influenced by the company's reputation for good delivery and the very compact design which was essential on the Russian contract.

The compressor modules are housed in six pumping stations located at intervals along the pipeline and all equipment used is designed to operate in temperatures ranging from as low as minus 50 degrees C to as hot as 40 degrees C.

SAFE

Both the gas treatment skids, where the natural gas is cleaned and dried, and the compressor modules were pre-assembled and tested in the UK prior to shipment to Russia.

The entire project, which will have the highest flow rate of any gas pipeline in the world, is intrinsically safe and flame proof.

"... The choice of Walsall equipment was very much influenced by the company's reputation for good delivery and the very compact design..."

EASY RIDER

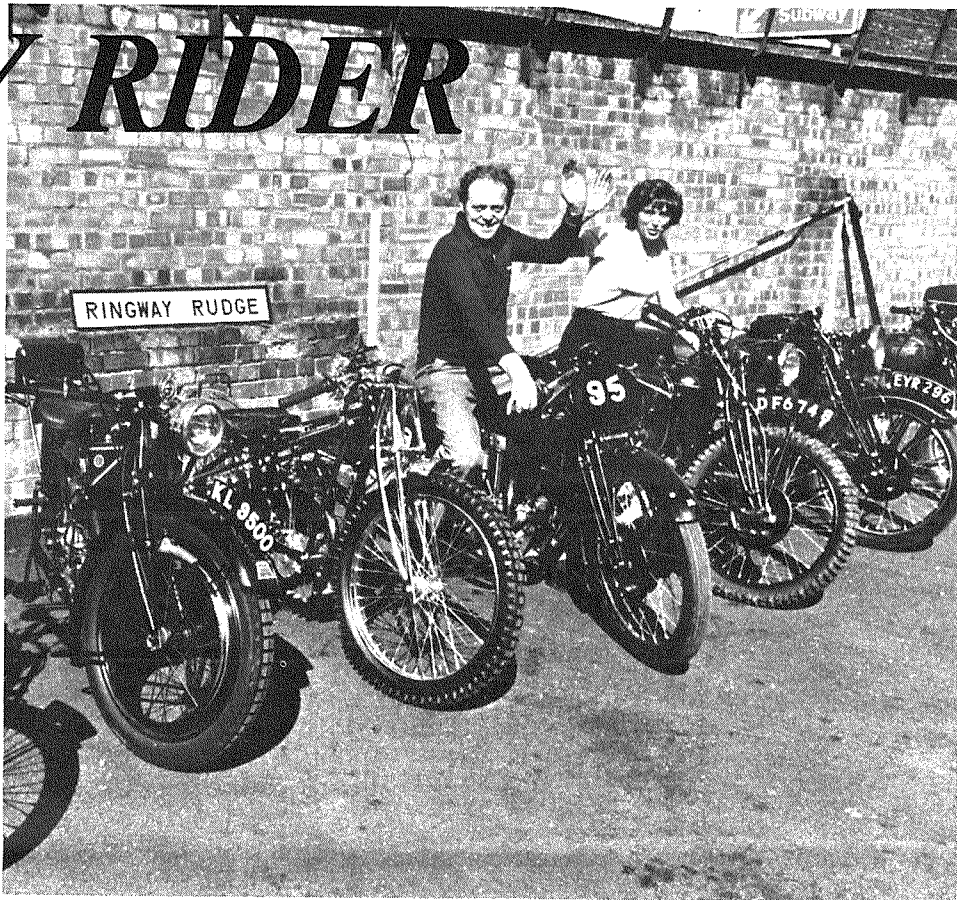
SEEN recently at the Spon Street works of GEC Telecommunications was this valuable range of Rudge motorcycles.

Representing the entire Rudge production story from 1912 to 1938, for the bikes it was a brief return to their original setting.

For, two years after production ceased, GEC took over the Rudge factory for radio production.

Later rebuilt and extended, the factory is now used for the production of telecommunications transmission equipment.

The bikes were in fact being taken by their owner, motor engineer David MacMahon, to the City Art Gallery and Museum, Coventry, for an exhibition.



RARE BIRD

BILL DRUMMOND is the envy of the golfing community at GEC Telecommunications, Kirkcaldy and Glenrothes.

Bill, who is employed in the systems department at Kirkcaldy factory, was playing in a recent golfing tournament at Glenrothes when he achieved a rare hole-in-one at the 228 yard fifth hole.

LEADERS

Playing off a 16, he finished on a nett 73. Unfortunately, however, this was not good enough to put him among the leaders.

GOLD Krugerrands, worth around £100 each, and crates of Scotch are the prizes in a big nationwide competition being launched by Satchwell Sunvic.

The Satchwell competition, opening on October 1, is primarily aimed at installers who are asked to state, in order of importance, the main attractions of the company's Daily Mail Blue Ribbon award-winning electronic programmer.

FIRST

They are also asked to say why they choose

Satchwell products.

First prize is three gold Krugerrands, second is two Krugerrands, and third is one, with a crate of whisky going to each of the stockists supplying the winners.

OFFICIAL

Any number of entries may be submitted, but each entry must be on the official entry form found in Satchwell electronic programmer cartons.

Entries should be in by January 31, and winners will be notified in March 1979.

See and save at Baker Street

SCHREIBER

Hotpoint

Come and visit our new showrooms at 9 Baker St., London W1.

You'll find top-quality Schreiber furniture for every room in the house including the attractive new Europa kitchen range. Also on show is the complete Iced Diamond refrigeration range, the Liberator home laundry range and our new Liberator dishwashers.

All GEC employees are entitled to advantageous staff

prices on all our products. So come along to the new showroom and order what you want, or fill in the coupon below for one of our catalogues.

Naturally, we'll deliver all Hotpoint and Schreiber products to your home. And each and every one of them will be fully covered by our guarantees. With every Hotpoint automatic, we'll also offer you a free installation check.

To GEC Schreiber, Ltd., Hoddesdon, Hertfordshire, EN11 0EL.

Please send me the catalogue(s) I have indicated:

Schreiber: Book of Furniture ☐

Hotpoint: Iced Diamond range ☐

Kitchens ☐

Liberator home laundry range ☐

Fitted bedroom ☐

Liberator

Hi-Fi storage cabinets ☐

dishwasher range ☐

NAME _____

ADDRESS _____

OBITUARY

Ryland Davis

ONE of the great characters from the old Metrovick days, Neville Ryland Davis, MA, F.Inst.P, MIEE, died peacefully during the summer.

Born in 1900 Mr Davis went to work in the research laboratories of Metrovick in Manchester. It was here that, in conjunction with Dr C. R. Burch, FRS, CBE, he developed the electric induction furnace, a method which revolutionised the production of high quality steel.

To demonstrate the simplicity and the cleanliness of the system the two men once melted a ton of steel wearing their dinner jackets!

FOUNDER

Another major invention followed in the mid-thirties with the invention of the "Simmerstat". This

device is now almost universally used for temperature control on cookers and other similar pieces of equipment.

Retiring in 1966 as managing director of the instrumentation division, AEI, Mr Davis was a founder member of the Worshipful Company of Scientific Instrument Makers and a Freeman of the City of London.

WOMEN IN ENGINEERING — BELINDA SCORES A DOUBLE



TWENTY-ONE year old Belinda Hunt of Chelmsford (above) has good reason to be pleased.

She is the first female engineering craft apprentice in Britain to have completed two Engineering Industry

Training Board Modules in Fitting and Turning.

Belinda, who has completed her apprenticeship at English Electric Valve, now works in the small power valve department workshop at Chelmsford as a skilled fitter/turner.

TRAFFIC PROBLEM BEATEN BY GEC

LIKE many towns, Swansea suffers from traffic congestion — but now a GEC company has helped to solve its problem.

Under a contract awarded to GEC-Elliott Traffic Automation of Borehamwood, for the supply of a Selective Vehicle Detection system, buses using the town centre will now be able to complete their journey's more quickly and travel to pre-set time tables.

MODIFIED

All buses will be fitted with a passive transponder which will be recognised by a special detector loop buried beneath the road surface on the approach to signalled intersections.

Buses passing over these loops will force-change the traffic lights ahead to give a priority green signal.

Existing traffic signal controllers have been modified by GEC-Elliott Traffic Automation, and at some locations new traffic signal controllers and detectors have been installed to complete the system.

EXPERIMENTS

The new unit is powered by the bus and is passive in operation, so greatly reducing the possibility of interference.

Features embodied in the system are the results of previous bus priority experiments carried out in Leicester and Derby.

Whilst the system gives priority at signalled junctions to buses, this does not mean that other road users who are held by red signals on the side roads will necessarily take longer journey times.

These vehicles will get extended green signals to compensate for the waiting time.

With the shorter bus journey times, it is hoped that the general public will be encouraged to use these services instead of private vehicles and so further reduce town centre congestion.

BY TOPIC REPORTER

EXPORT BOOM FOR SF6 SWITCHGEAR

OVER two-thirds of GEC's production of SF6 switchgear this year will be exported. This is a turn-around from last year when roughly the same proportion went to the home market.

Following major orders from the CEBG for SF6 switchgear for Littlebrook, Dinorwic, Pentir and Kemsley power stations, the company has more recently received orders for 44 345kV breakers for South Korea, as well as smaller ones for Brazil and Malaysia.

BY A

TOPIC

CORRESPONDENT

Switchgear which previously was responsible for making this equipment.

From the beginning of April, a new company GEC High Voltage Switchgear has been responsible for making SF6 switchgear, while equipment for the lower voltages are being made by GEC Distribution Switchgear.

Ray Crummack heads the new h.v. switchgear company which takes over about 60 per cent of the old GEC Switchgear with factories at Trafford Park and Stafford.

The company sees increasing demand for SF6 switchgear for transmission voltages, in particular for the metal clad versions, and has phased out its air blast circuit-breakers altogether, apart from supplying spares.

GEC has reorganised the structure of the old GEC

CONTINUED ON
PAGE 7

BOB COULSON, managing director, of the English Electric Valve Company, Chelmsford, recently announced the acquisition of the former Marconi integrated circuit factory at Witham, Essex.

"This new factory", said Mr Coulson, "will give us another 100,000 square feet of space. We plan to recruit more employees and move some of our activities from Chelmsford and Maldon during the next two years."

EXPAND

"The sections which move to Witham will have all the facilities of a modern building designed and built as an electronics factory."

NEW FACTORY MEANS MORE JOBS AT EEV

There will be space to expand in order to meet the increase in sales forecast for our products.

BEST

"Moving small klystrons, travelling wave tubes and glass base production to Witham will release corresponding space for other departments as well as for the expansion of TV klystron production, the development of the apprentice school and the installation of new

machine tools."

"The overall plan represents the best compromise between the various conflicting views about which departments should move, and there will now be detailed discussions with all the departments involved."

★ ★

GRAEME CHALK has been appointed manager of the new Witham works and **BRIAN COOPER** will be his deputy.

BIGGER CHOICE-BIGGER SAVINGS

25%-50% DISCOUNT

**ON BRANDED FURNITURE
BEDS·BEDDING·CARPETS
CURTAINS AND FABRICS**

- * Free delivery right to your door. All areas of UK mainland/I.O.W.
- * Postal/Telephone orders welcomed.
- * Personal service before and after sale.
- * Low interest credit facilities on discounted prices.
- * All items covered by manufacturers' guarantee.
- * Write, call or telephone today for free estimates and quotations.

SAVE **FREE DELIVERY**
IN UK-NO EXTRAS!
with **Bains of Ilford**

133 Ilford Lane, Ilford, Essex. Tel 01-553 1011/4. Over 30 years of service

DRAGOONS WIN MARCONI 'BATTLE CUP'

Right: A team from the 5th Royal Inniskilling Dragoon Guards, with the Communications Cup presented by Marconi Space and Defence Systems to winners of Exercise Parashot. The exercise is an annual competition, involving a large number of teams from Rhine Army units, which covers many types of operational exercises in the field.



TOPIC TALKING POINT

THE TERRIBLE PRICE BRITAIN PAYS FOR ASTHMA

ASTHMA seems to have become commoner in the past ten years and we don't know why — but there are certainly more asthmatic children in our schools than there used to be.

This disturbing revelation is made by Professor C. M. Fletcher, one of Britain's leading authorities on chest diseases in a recent Asthma Research Council's Annual Report.

"SAD"

"Research has now given us a lot of quite new medicines, and there are very few diseases in which treatment has been advanced so rapidly", Professor Fletcher says.

"But in spite of this, we've not got asthma beaten yet."

"Although we can relieve the less severe cases much better than we used to — usually giving almost complete relief — there is a small number of very severe cases which defeat us."

"It's sad to report that in the UK each year about 1,000 people under the age of 35, many of them children, do die after hours of desperate struggling to breathe."

"And this number has scarcely lessened in twenty years".

DIFFICULT

Asthma is a dreadful disease of global dimensions.

The number of its victims throughout the world runs into very many millions. Estimates put the number of asthmatics in Britain at over a million.

The growing awareness among doctors of the lethal potential of severe attacks of asthma is partly responsible for the increase in the admissions of asthmatics to hospitals in recent years, the council's report discloses.

Asthma in children is particularly alarming to witness and is often difficult to diagnose and treat.

ESTIMATES

Most asthmatic children develop their symptoms before they reach the age of five, more boys showing signs of the disease than girls, a difference that levels out towards adolescence.

Persistent asthma usually starts before the age of three, but mild asthma usually begins at

a later age and can disappear before the child is 10.

Estimates put the cost of asthma to the National Health Service in 1974 at about £25 million, more than half of which was for hospital in-patient services.

Figures also show that 2,245,000 working days were lost to the nation through asthma from June 31, 1974, to May 31, 1975 (males 1,689,000, females 556,000), costing over £2 million in sickness benefits.

MONEY

No figures, however, can be put on the personal cost to the individual suffering from asthma in terms of anxiety, dislocation, lost potential and social handicaps, although this can be said to be tremendous.

All the above figures point to one inescapable fact — that far more money must be spent on asthma research if the suffering and deaths from asthma are to be reduced.

The Asthma Research Council has been financing research projects in British hospitals and universities into all aspects of asthma since 1927 when "suffering from the disease was appalling and deaths from it were alarming".

MEET

At the time, asthma research as we know it today "was almost non-existent, despite the fact that asthma had been recognised as a serious affliction of the lungs since the time of Hippocrates, father of medicine, some 2,000 years before".

The Council is receiving an increasing amount of financial help each year in its fight against asthma from the Friends of the Asthma Research Council — a nation-wide movement that anyone sympathetic to the cause of asthma research can join. Members can meet socially and exchange views on common problems of asthma.

* * *



WHEN the Mayor and Mayoress of Lichfield, councillor and Mrs E. Godfrey, visited the GEC-Xpelair stand at the International Ideal Homes Show, they were greeted by the Birmingham company's field sales manager, Mike Wright (left) and by Miss Xpelair, 22-year-old Dorothy Jones of Great Barr.

The company's stand at the National Exhibition Centre featured a range of heating and ventilating equipment and included two new products which were being shown at the show for the first time.

They were a 2kw portable fan heater and an economically priced domestic waste disposal unit known as the Pelican Popular.

THE GEC SF6 CHANGES —FROM P6

The GEC designs of SF6 switchgear results from collaboration with the German company of Siemens which has resulted in a range of open-type and metalclad units covering the range 145kV (132kV) up to 420kV (400kV).

FALL

It incorporates a single pressure breaker which is acceptable to both the CEBG and overseas buyers.

The move towards exporting the majority of GEC SF6 switchgear, fol-

lows a major fall in demand from the home market.

INVESTING

This has dropped from about £60 million a year for transmission switchgear in the early 1960s to about £10 million at present.

In real terms the fall is much greater when inflation is considered.

GEC HV Switchgear has been investing large sums in production facilities, a total of £4 million from 1976 up to 1978.

In addition it has been spending about 10 per cent

of its turnover on developing the SF6 equipment.

Although the original design of the gas-breaker came from Siemens, GEC has developed it considerably to meet both CEBG requirements for a two-cycle breaker and also for higher ratings.

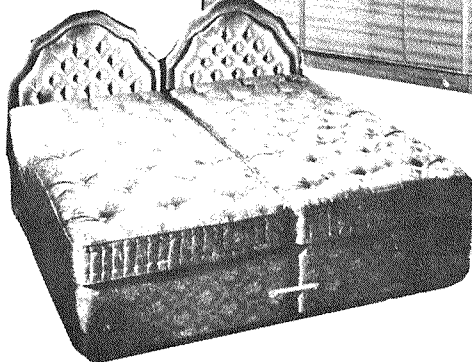
CHAIRMAN

In the reorganisation of the switchgear companies, Frank Gibbs who was managing director of GEC Switchgear, becomes chairman of each of the new companies, and of the transformer companies.



We offer you 27½ to 50% discounts on leading ranges of furniture and bedding

Members of the
National Association
NARF
of Retail Furnishers



A huge selection of top quality furniture and upholstery, as well as over 400 divan sets, manufactured by the trades leading makers are available from stock, ready for immediate free delivery by our own vans within a hundred mile radius of Central London. All our merchandise is covered by manufacturers guarantee as well as our own guarantee. Should any complaint arise, our after sales service ensures you of our earliest possible attention. For your convenience we have arranged with Forward Trust, a leading finance house for credit facilities to be made available to approved customers this applies even at discount prices.

For many years we have supplied furniture and bedding to local authorities, nursing homes, restaurants etc. both at home and abroad. Why not phone us your contract requirements. If you have any inquiries ask us first.

Sellers
OF LONDON

01-360 0444
Monday to Friday 9 a.m. to 5 p.m.
or send for our free brochure to:
KINGS AVENUE
WINCHMORE HILL
LONDON N21 3NA

OVER 400 DIVAN SETS IN STOCK

FOCUS ON WORK EXPERIENCE

BY TOPIC REPORTER



GEC Machine's Thorne works in Doncaster is helping to give youngsters an insight to the realities of working life.

BENEFIT

The unit has introduced a work experience programme. Encouraged by the manpower services commission, young people are employed by the company for a period of six

months and, provided training is given, they are paid a wage of £19 per week.

At the present time, three teenagers are benefiting from this scheme. Beverley Critchley, has been assigned to the personnel department, Karen Peppard to the works restaurant and Robert Nixon to the receiving department.

All three have settled in well and are happily contributing to GEC Thorne's output. As Eric Finch, training officer at Thorne concluded: "This is one scheme that can really work for all parties concerned".

The original goal has been achieved. With GEC's help, these young people now have a clearer picture of adult working life.

It's been a busy life for Beverley Critchley, left, another of GEC Machine's temporary recruits.

Our picture shows Beverley at work in the company's personnel office.

Right: Robert Nixon gaining an insight into the realities of working life.

Our picture shows him stock taking in the receiving department of GEC Machine's Thorne works.



Back to school for Sir!

AS part of a Warwickshire Education Authority School / Industrial Liaison Scheme, Des Garner — head of the mathematics department at Harris Church of England High School, Rugby — spent a two week period at the Rugby works of GEC Industrial Controls.

The purpose of the scheme is three-fold; to enable teachers to relate their academic work to the practical needs of industrial and commercial life; to provide teachers with a better appreciation of the educational and other standards required by employers and to bring about a closer relationship between industry and schools.

During his two weeks with GEC Industrial Con-

trols, Mr Garner spent time in a number of departments covering design engineering, commercial engineering, drawing office, manufacture, estimating, business systems, industrial relations, purchasing and accounting.

Visits were also made to the computer systems test and drawing offices of GEC Electrical Projects at Boughton Road, Rugby.

Our photograph, left, shows Mr Garner discussing a circuit diagram with one of his former pupils — Martin Withers (seated), now a second year apprentice with GEC Industrial Controls. To the left of the picture is Jeremy Bedding, a former pupil of Daventry School.

Des Garner's short spell in industry should further benefit the work experience programme.

It should be of special help to those students unable to visit an industrial environment for themselves — for all, the realities of working life should be that much closer.



▲ Des Garner, background, during his visit to GEC Industrial Controls.

... AND FOR RETIRED PEOPLE

A meeting place for retired personnel wishing to retain contact with their former workmates has been established at GEC's Kidsgrove site, Staffordshire.

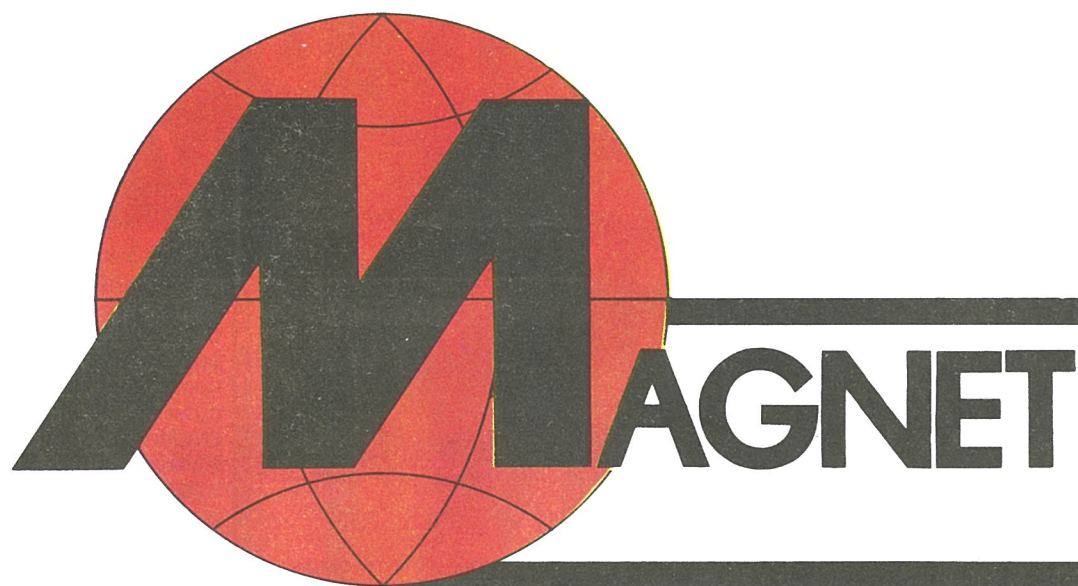
Called the Retired Personnel Section, the forty members of the club meet one Wednesday each month, at the Kidsgrove Social Centre.

Members of the Sports and Athletic

Association who helped to establish the club are more than pleased with its progress so far. They are confident that the section will grow from strength to strength.

If there is anyone

within another company who knows of a similar activity and would like to share ideas, then please contact Mr Poole, social centre chairman, on Kidsgrove 3511, ext. 2063.



Travellers' News

**It's not too late to think about your Winter Sports or Winter Sunshine Holiday!
And it's not too early to start thinking about Summer Holidays 1979!
Early reservations ensure your first choice of resort, and the most convenient date.
Let Magnet advise you.
Take advantage of this special service.**

ESCAPE THE WINTER GLOOM AND ENJOY A COLOURFUL WEEKEND.

Magnet has made special arrangements which are available for members of GEC Sports & Social Clubs to join the following Winter "City Breaks", weekends (or longer).

Weekly Friday departures from Luton or Gatwick November '78—April '79.

Examples of our low, low prices:

Milan	£59
Munich, Bologna, Madrid, Venice & Lisbon	£65
Rome & Florence	£75
Naples & Vienna	£79
Palermo	£82

These prices include 3 nights in minimum standard, multi-bedded, hostel type rooms with no facilities, on a room only basis.

Better class hotels can be booked at a supplementary charge. Minimum group of 10 passengers.

Telephone for further information to Holiday Department 01-836 9761.

WEEKEND TO THE DUTCH BULB FIELDS 27-29 APRIL 1979. FULLY ESCORTED BY COACH

Friday

Early afternoon departure from your centre for sea crossing to the Continent and onward to Bredna near Ostend, Belgium, in time for dinner at our hotel.

Saturday

After breakfast we drive into Holland to Heukenhof Park through the Bulbfields. We return to our hotel via the Hague where we will take dinner.

Sunday

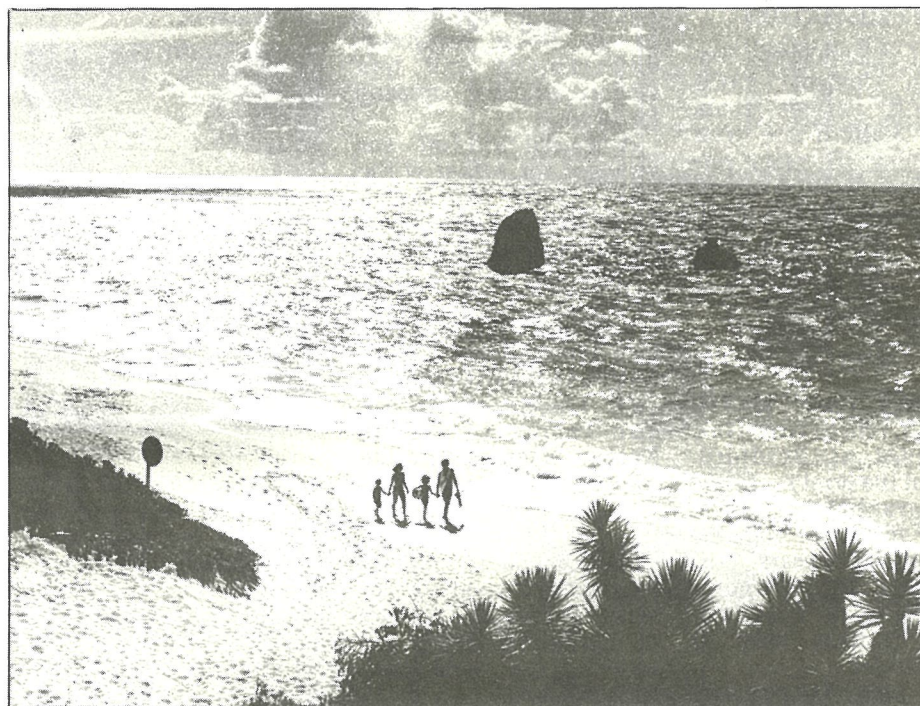
After breakfast we visit Bruges and Ostend en route to our crossing to England where we arrive during the evening at your centre.

Price £57

The price includes:

Fully escorted tour—the coach travels with you
Accommodation in twin bedded rooms with hot and cold running water (no singles available) in a medium grade hotel. Dinner on Friday and Saturday and Breakfast on Saturday and Sunday.

Ring our groups department on 01-836 9761.



Warwick Parish, Bermuda

AN EXTRA SPECIAL HOLIDAY IN THE CARIBBEAN SUNSHINE

Further special arrangements have been made to enable GEC employees to enjoy a week of Caribbean Sun.

Weekly departures from Luton, October 30th '78 to April 23rd '79 inclusive.

Prices range from the incredible starting rate of £212.00 per person for a self catering holiday at the beautiful Halcyon Days Bungalows on St. Lucia.

This fantastic price includes flights from and to Luton, transfers on arrival & departure, and six passengers sharing a three bedroom bungalow.

Each bungalow has a balcony, sitting room/diner, kitchen with gas cooker, refrigerator, sink, etc, and is air conditioned.

Food can be purchased from the hotel store. There is a daily maid who can often be talked into doing some cooking.

Regular holidays with the usual meals can be taken in Halcyon Days Hotel, La Toc & Holiday Inn. Details and prices on request.

Also available are similar holidays to Barbados, Martinique, St. Vincent and Domenica.

Ring our Holiday Department on 01-836 9761.

We are agents for the following Tour Operators:—

Allens (Jersey)	D.E.R.	Jetline	Modernline	Southbound	Travelscene
Allsun	Enterprise	Jersey Travel	Mundicolour	Sovereign	Travetel
Argosy	Finlandia	Kuoni Travel	Norway only	Sunorama	Triaenne Travel
Balkan Holidays	Gala Holidays	Leroy	O.S.C.	Sunquest	Tyrolean Travel
Blue Skies	Global of London Ltd.	Lyons	O.T.A.	Swans	U.S.A. Travel Centre
C.I.T.	Grecian Holidays	Malta Tours	Paris Travel	Swiss Travel Service	Victor Holidays
	Inghams	Medina	Rankin Kuhn	Trafalgar Travel	Yugotours

We can also book for any other A.B.T.A. Operator.

SPOTLIGHT ON GEC RETIREMENTS

Here *Topic* highlights the careers of people retiring from GEC units throughout the country.

JACK GARNETT, turbine expert from Turbine Development, Barton Dock Road Works, Manchester retired from the company after half a century.

With the exception of six years helping to build Lancaster bombers in AEI at Trafford Park, Jack's working life has been spent in Turbine Departments.

From now on he plans to relax by spending more time in his garden using the garden tools presented to him by his colleagues.

APPRECIATION

Chief of Switchgear Production Control, **JACK HAMER** retires from GEC's Stafford site after completing 50 years service. And from southern England, **WALTER ASHDOWN** received a gold watch in appreciation of the 50 years he has spent with MSDS in Essex.

SPECIAL

Another chief, **DAVID HAYES**, retired from GEC Machines at Bradford. Chief of the print room and photographic services, David, had been with the company for 42 years.

FRANK JOYCE retires from Marconi Communication Systems after 41 years service.

Like many long serving GEC people, **ARTHUR KINGHAM**, stores supervisor with Osram at Wembley, began his working



Arthur Kingham

career at GEC Kingsway. He started as an office boy in the house engineers department and has stopped with the company for 50 years.

A special send-off was arranged for Arthur at the GEC Sports and Social Club where he received greetings from his many friends and colleagues at Osram.

Retiring after 47 years with Witton-based Xpelair is **RONALD PHILLIPS**.

Mr Phillips has been a maintenance fitter with Xpelair since joining the company back in 1931.

CROCHETING

He intends to put his retirement to good use pursuing his favourite hobbies of gardening, DIY and watching the 'local lads', Aston Villa.

One very popular face that will be missed from the component test department of GEC Telecom-

BY TOPIC REPORTER

munications' Spon Street works is that of **DORIS PRITCHARD**.

For Doris retires after 47 years with the company. She plans to spend her retirement sewing, crocheting and reading.

Lively farewell celebrations ended the 50 years service of **JOE RUMBOLD** of GEC Machines Farsley division.

Joe started as an apprentice with English Electric in the traction division. He soon became one of the company's youngest chargehands.



Walter Ashdown

The last 30 years of his career were spent in the Machines company as a production engineer. During this time Joe travelled widely in Europe and the United States.

LEN SHELMEKDINE of the M. O. Valve company, Brook Green, retires after 45 years service with GEC.

Len's MOV colleagues



David Hayes and a female colleague.

presented him with an unusual memento — an ashtray made from the face plate of a radar cathode ray tube.

Celebrations in the Bristol office of GEC Machines marked the retirement of **BOB SPROT** after 30 years with English

Electric and GEC.

REG THEOBALD retires from Marconi Communication Systems after 50 years service. A very keen gardener, Reg was presented with a garden seat and a hose reel on behalf of his Chelmsford colleagues.

NORMAN MOORE retired recently after 50 years service with Walsall Conduits, West Bromwich, broken only by army service in the last war.

Having joined the old Walsall Hardware company as a 15-year-old errand boy in 1927, one of his duties was the somewhat perilous task of transporting 14 foot lengths of conduit to customers within a 20 mile radius of the factory — with the tubes strapped to the crossbar of his bicycle!

Bangles produced by the company found a ready overseas market as adornments for native girls wrists and ankles and the

company's broom socket was an economy device much sought after by local councils ... by changing the handle from one side of the broom to the other, they claimed to get double the life out of the bristles!

With a change of name to Walsall Conduits, the company discontinued the manufacture of its more "exotic" products to concentrate on electrical goods.

For many years up to his retirement, Norman was

office manager at Walsall Conduits Nottingham branch and had seen the company grow from its modest beginnings to become one of Britain's leading electrical manufacturing and distribution companies.

Having said his good-byes and received good wishes and tributes from customer and company friends alike it seems you can't keep a good man down for Norman has already returned to Nottingham branch (part-time only), to help out with the current flow of business.

A FISHY TALE!

A father and son partnership from the Maryport factory of GEC-Elliott Process Instruments led a small team of canoeists on a difficult, 25-mile return crossing of the Solway Firth.

M. Thompson, chairman and instructor of the Solway Canoe Club and his son Stephen, who is treasurer, made the crossing in July when the weather conditions should have been favourable.

However, they encountered rough water and strong currents on the journey to Southernness in Scotland.

The team also came across a basking shark — which, it seemed, help speed their journey along!

SOLUTION TO THE MAY/JUNE CROSSWORD

ACROSS:

1. Pumps; 4. Beautiful; 9. Eyeball; 10. Twisted; 11. Thickness; 12. Organ; 13. Figtree; 15. Eminent; 17. Luggage; 20. Tighter; 22. Tenth; 23. Dependant; 25. Climber; 26. Arsenal; 27. Sincerely; 28. Sides.

DOWN:

1. Plentiful; 2. Meeting; 3. Shark; 4. Believe; 5. Artiste; 6. Tailoring; 7. Fatigue; 8. Laden; 14. Reachable; 16. Throttles; 18. Gentian; 19. Endorse; 20. Topiary; 21. Trained; 22. Tacks; 24. Noses.

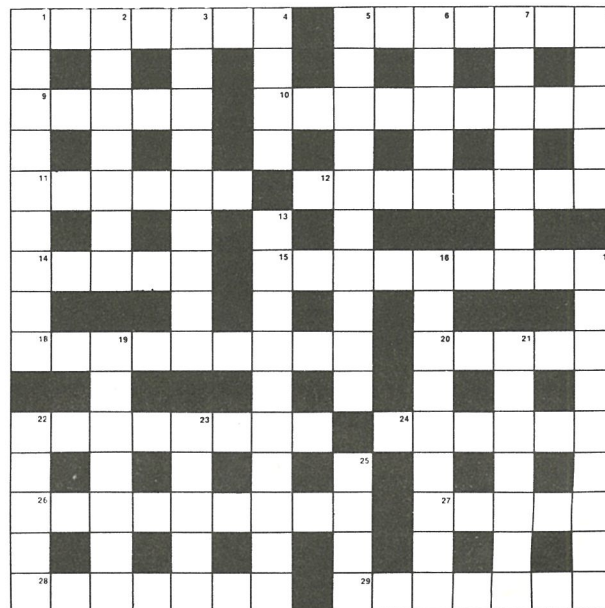
ACROSS:

1. Leave a band of musicians on show (7)
5. You can credit it is a sort of live bee (7)
9. Prose asks a question (5)
10. Look at a full stop from this angle (9)
11. To be strong and vigorous, yet almost drugged (6)
12. All is not a mix up for the animal (8)
14. This could prove he was not there (5)
15. The ability to endure (9)
18. GREASE SID. Anag. I don't believe it (9)
20. You can get no more so you have nothing (5)
22. Apparently a game to be played in bed (8)
24. A flier without spirit (6)
26. Perhaps a course of revision (9)
27. The sailor almost over on top (5)
28. If you see it near then it is probably made of clay (7)
29. Gives satisfaction as sleep is broken (7)

DOWN:

1. SEND A PRAM. Anag. And it is short (9)
2. An animal on top of a spear (7)
3. Not as bright as it was (9)
4. Sounds a mischievous part of church (4)
5. You would not live long like this (10)
6. Can be called a bit of a turn coat (5)
7. Number one tide comes up in this issue (7)
8. Consumed more than half a score (5)
13. Make more powerful and then finish it (10)
16. Act of a disbeliever in "vengeance is mine" (9)
17. Wanting to get on with the job (9)
19. Not so wobbly so it fits up top (7)
21. May be soon rid of the interior (7)
22. Cures maybe with a swear word (5)
23. Sounds like the right tree for the sea side (5)
25. Fall down just a little (4)

TOPIC CROSSWORD



The three Morphy Richards time and labour saving appliances we have chosen as prizes for this competition are either an automatic toaster, a travelling hairdryer or a white steam / spray iron.

Entries should be sent to: *Topic*, The General Electric Company Ltd, 1 Stanhope Gate, London W1A 1EH. They must arrive here by November 20. Please mark your envelope May / June crossword and include your home and work address, together with the prize you would like. The two prize winners will be chosen by draw.

The winners of the May / June crossword competition are Mrs A. J. Rising of Hirst Research Centre, Wembley and Mr A. Drummond of GEC Mechanical Handling, Erith in Kent.

TOPIC COPY DATE
NOVEMBER 20

OVERSEAS CLUB

THE annual dinner will be held at The Waldorf Hotel, Aldwych, London on Thursday, November 2 at 6.30 pm for 7.

Tickets, £5.00 including table wine and an aperitif, may be obtained from the council secretary at 1 Stanhope Gate, W1A 1EH. Tel 493 8484 Ext. 5 (Tuesday and Thursday).

Masonic Hall, Rugby on the evening of February 21. Centre members should make a note of this in their diaries. Full details will be given nearer the date.

SOUTH AFRICA

The Johannesburg Centre's annual dinner will be held at the Inanda Club on Thursday, November 23 under the chairmanship of Jeff Hancock.

COVENTRY CENTRE

The centre was pleased to entertain ten Nigerian students at a buffet supper held at the Grange. Their names were: Anthony Taiwo; Emmanuel Ifeakor; Segun Oguntoyinbo; Joseph Ajayi; David Okpongpong; Henry Ani; Stevro Aina; Michael Ajanaku; Adelaja Banjo; and Donald Egbukichi. They were welcomed by our chairman J. G. Williams and elected to membership of the club.

ANNUAL

The annual golf fixtures versus Manchester Centre were held at the Grange and at Flixton. These matches are always most enjoyable and the result was a win for Coventry on aggregate.

The first of an annual fixture for the future was held versus Stafford Centre at Whittingdon Barracks Golf Club.

The result was a 2-2 draw but the trophy awarded to Stafford having won by a higher margin of holes.

'DELIGHTFUL'

INTER CENTRE GOLF MATCH: Coventry centre were the hosts this year and arranged a delightful day at Kenilworth Golf Club in September.

BEST

John Mackie, our organiser, wishes to thank all who took part and looks forward to bringing them together again next season.

Our members have also been busy on the golf course and Geoff Briggs reports that the Rugby Centre played the Leonard Short Golf Trophy Match on July 3, 1978.

The best card was returned by C. Bramham with a score of 39 points.

In addition, through the summer months golf matches have been held between Rugby and Stafford, when Stafford won. Home and away matches were held between Rugby and Coventry Centres, with Coventry being the victors.

All these were well supported and extremely pleasant evenings were enjoyed by all participants.

DINNER

For the future, two bridge matches will be held at Coventry and Rugby between now and Christmas. Members will be advised of the dates.

Finally the annual centre dinner will be held at the

All contributions to this column should be sent to HARRY BEGENT, Overseas Operations, GEC, 1 Stanhope Gate, London, W1A 1EH.

INTER-CENTRE GOLF COMPETITION

RESULTS

AUSTRALIA CUP (TEAM AWARD)

Coventry Centre	Points	Total	Position
1. E. Soutar	34 ⁷ / ₈		
2. D. Craig	34	135	1st
3. B. Cooper	33 ⁷ / ₈		
4. M. Williamson	32 ¹ / ₄		

Stafford Centre

1. K. Ancilewski	37		
2. W. Todd	35 ¹ / ₈	134 ⁵ / ₈	2nd
3. F. Creer	32		
4. J. Ryan	30 ¹ / ₂		

Rugby Centre

1. G. Briggs	32		
2. W. Sinclair	31 ¹ / ₂	123 ⁵ / ₈	3rd
3. A. Allquist	31 ¹ / ₈		
4. J. White	29		

Manchester Centre

1. B. Baker	36 ¹ / ₂		
2. L. Abrahm	27	118	4th
3. J. Johnson	25 ⁷ / ₈		
4. C. Hill	25 ⁵ / ₈		

London Centre

1. T. Cross	35		
2. G. Ayres	29	117	5th
3. K. Pape	28		
4. J. Hook	25		

Chelmsford Centre

1. E. Wardman	35		
2. Wassal	32	116	6th
3. S. Clarke	27		
4. B. Meade	22		

HUGO HIRST CUP (INDIVIDUAL BEST NETT)

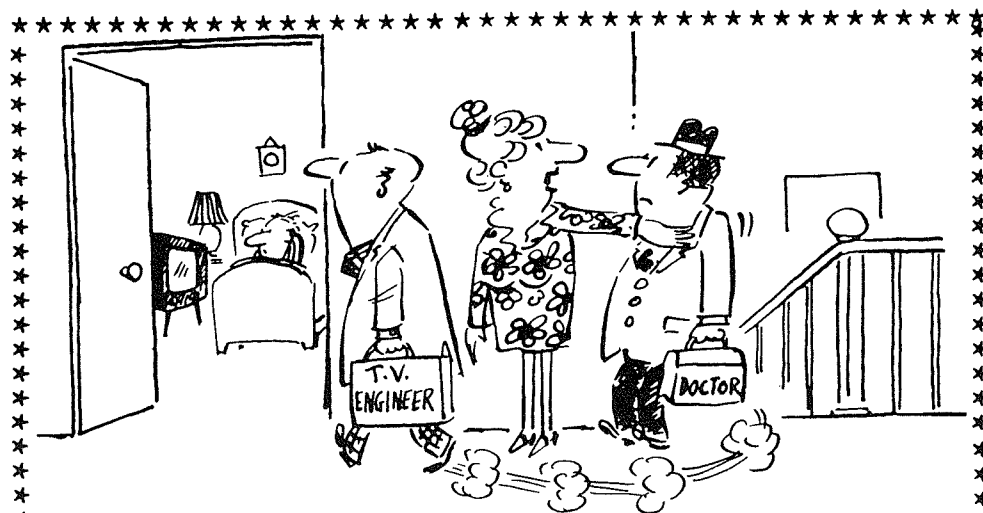
Winner: K. Ancilewski	Stafford	37 pts
Runner-up: B. Baker	Manchester	36 ¹ / ₂ pts

A. S. BLACK CUP (INDIVIDUAL BEST GROSS)

Winner: D. Sinclair	Rugby	80
Runner-up: D. Craig	Coventry	81

PHIL. PHILLIPS TROPHY

(INDIVIDUAL FOR 18-24 HANDICAPS)		
Winner: E. Wardman	Chelmsford	35 ³ / ₄



"I'M SORRY - BUT THIS IS AN EMERGENCY!"

OSRAM GEC COMPETITION —

SPORTSTOWN '78 VICTORY GOES TO HARROW

BY TOPIC REPORTER

THREE teams representing the boroughs of Brent, Ealing and Harrow battled for the Osram-GEC Trophy in the "Sportstown '78" competition held recently at Vale Farm Sports Centre, Sudbury, Wembley.

The event was attended by the Mayor and Mayoress from each of the participating boroughs, and was officially opened by the Mayor of Brent.

NATIONAL

Conceived originally as part of the Borough of Brent's celebrations of the Queen's Silver Jubilee, "Sportstown" is expected to be held as an annual event. If it proves to be popular it

is hoped to develop the idea on a national scale.

The programme included athletics, badminton, tennis, judo, netball, table-tennis, football, squash, swimming and softball.

WINNERS

The three teams were awarded points in each event, and at the end of the day the borough with the highest total marks was awarded the Osram-GEC Trophy. The winning borough was Harrow, and John Newman, chairman, Brent Sports Council and director of Osram-GEC, presented the trophy to Barry Turner, Mayor of Harrow who received it on behalf of the winning team.

Still the leaders in Hatton Garden for selection and quality.

An announcement to all journal readers!

As the leaders in Hatton Garden we offer a huge and exciting range of rings and all other jewellery. Compare our quality!

Engagement Rings

All Diamond and Precious Gem Jewellery.

42¹/₂%

33¹/₃%

Wedding Rings, Signet Rings, Bracelet, Charms, Chains and all Gold Jewellery.

Nationwide Mail Order Service available.

All colour catalogue on request.

15-25%

Branded Swiss Watches

DISCOUNTS apply to full price as clearly marked in our windows.

44-70 Hatton Garden, London EC1. Tel: 01-242 8755
Hours of opening: Weekdays 9.30 to 5.30 Saturdays 9.30 to 4 p.m.
151-153 Grainger Street, Newcastle-upon-Tyne. Tel: Newcastle 23796
28 Albion Place, Leeds 1. Tel: Leeds 452456
Newcastle and Leeds Hours of opening: 9.30 to 5.30 (including Saturdays)



BRANDON HOUSE LTD
CRAFTSMAN JEWELLERS
ENGAGEMENT & WEDDING RING MANUFACTURERS

FURNITURE CARPETS

15%-33¹/₃%
DISCOUNT

- All leading brands
- Carpet fitting available
- Delivery throughout UK

Hours: Mon. to Fri. 9.00 - 5.30
Sat. 9.00 - 5.00 (London only)
BRANCHES CLOSE SATURDAYS at 12.30 pm

Orders by post or phone accepted or write for introductory brochure to Dept.TPC

Dodson Bull Choose with confidence
Established 1961 Assets exceed £600,000

Barbican Furnishing Centre (Opposite Barbican Underground Stn.)
100 Aldersgate Street, London EC2Y 8AE Telephone: 01-628 7020

ABERDEEN: 11 Exchange St., AB1 2NH. Tel: 54055/6
BIRMINGHAM: 164 Edmund St., B3 2HB. Tel: 021-236 5862
BOURNEMOUTH: 268 Old Christchurch Rd., BH1 1PH. Tel: 21248
BRIGHTON: 2-5 North Road, BN1 1YA. Tel: 606402/3/4
BRISTOL: 2-3 Royal London Hse., Queen Charlotte St., BS1 4EX. Tel: 28857
EXETER: 157 Fore St., EX4 3AT. Tel: 32019
FALMOUTH: 35 Killigrew St., TR11 3PW. Tel: 313555
GLASGOW: 166 Howard St., G1 4HA. Tel: 041-221 3278
IPSWICH: 116-118 St. Helens St., IP4 2LE. Tel: Ipswich 210268/9
LEEDS: 12 Great George St., LS1 3DW. Tel: 41451
MANCHESTER: 55-61 Lever St., M1 1DE. Tel: 061-236 3687/8/9
NEWCASTLE-upon-TYNE: 90-92 Pilgrim St., NE1 6SG. Tel: 20321/21428
WESTCLIFF-on-SEA: 495 London Rd., SS0 9LG. Tel: Southend 46569

APPOINTMENTS At home and abroad



PROMOTIONS AT MOTHERWELL

SATCHWELL SUNVIC of Motherwell, the GEC temperature and appliance company, has announced three promotions within their UK Heating Division.

DAVID BROWN becomes regional manager, (North); FRED HASELDEN, regional manager, (South), and JOHN MOSSMAN in his new capacity of contracts sales manager will be responsible for major specifiers and contractors in the London area.

Jim Cooper, Satchwell's commercial manager, says: "During the last two to three years, we have been making steady progress in the heating and

ventilating business to the point where we are undisputed brand leaders in a number of market sectors.

"We intend to retain that position with our established products, and with the recent introduction of a number of new products and more to follow, the time is right to strengthen our field sales management structure to ensure the next phase of our planned expansion in this field."



MARCONI EXPANDS UK SALES

FOLLOWING the recent appointment of Bob Briggs as sales director, the UK selling operation of Marconi Instruments, a GEC-Marconi Electronics company, has been reorganised and expanded.

To aid this expansion four sales engineers have been appointed area managers.

They will be responsible both for direct selling in their own territories and for the activities of a small number of other Sales Engineers.

DETAILS

The new appointments are as follows: Max Abbott is the new area manager for counties North of the Wash / Mersey Line including Scotland; Dick Andrews, area manager for the Post Office, IBA, Northern Ireland and Eire; Terry Boyle, area manager for South-East England, South of the Thames and John Leggatt, area manager for South-East England, North of the Thames.

LED

Stuart Bakermault is appointed sales engineer for Scotland. Ted Price retains his South-West England and Wales territory and Ray Munden continues to look after the Marconi companies in the Chelmsford area.

The whole team is led by Bill Greening, UK sales manager.



Bob Briggs



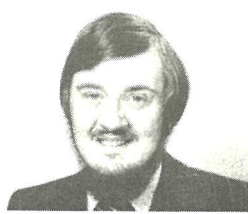
Max Abbott



Dick Andrews



Terry Boyle



John Leggatt

MANAGEMENT CHANGES AT GEC ENGINEERING (ACCRINGTON) . . .

W. Nisbet, managing director of GEC Engineering (Accrington) since he succeeded the late John Threlfall in 1964, has relinquished executive responsibility for the Accrington works and is succeeded by J. B. Torrance as director and general manager.

Mr Torrance joins GEC from Saunders Valve Company Limited, Cwmbran, South Wales, having previously been general manager with Otis Elevator Company Limited, Kirkby, Liverpool.

Following a restructuring of the management team the following appointments have also been made:

J. Horman — director of personnel & administration; D. R. Holmes — director of finance & purchasing; M. J. Ward-Best — director of new products; R. A. McCarthy — works manager; D. C. G. Green — quality manager; A. W. Pedder — manager, sales & contracts.

GEC Engineering (Accrington) held a presentation evening at the Conservative Club, Accrington, in April to mark the retirement of Mr Nisbet and the presentation of long service awards to 14 employees who had completed 25 years

service.

Mr Nisbet was presented with a portable television set and ancillary equipment to which all sections of the works and other colleagues within GEC had subscribed.

In making the presentation, Mr Torrance made reference to Mr Nisbet's 32 years on the site, 14 of which he had been managing director.

He had seen many changes of product and fluctuating fortunes.

Mr Nisbet had also served the engineering industry in general through his membership of the Engineering Employers' Association, being president of the South Lancashire

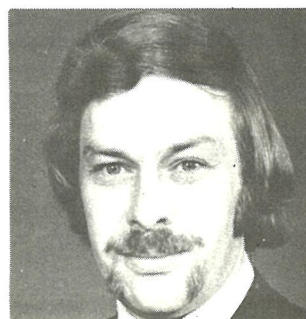
Association during 1975 and 1976.

EVENING

The awards for long service were presented by Mr and Mrs Nisbet to:

Mrs D. Allen; J. Blackburn; H. Byrom; A. C. L. Dowell; D. C. G. Green; J. Hale; J. Hargreaves; F. Lavelle; Mrs S. M. Martin; P. Murray; J. Slattery; D. Wade; A. Walsh; R. Wigglesworth.

During the evening about 350 employees, their wives, retired employees and visitors from other works enjoyed a buffet supper, dancing and entertainment.



MICHAEL VAUGHAN, above, has been appointed sales engineer for the English Electric Valve Company. He will be responsible for selling marine radar products and will be based at Chelmsford, Essex. Mr Vaughan joined EEV in 1963, completed his apprenticeship and obtained a full technological certificate in telecommunications. He has previously worked for Bradley Electronics and, most recently, for the Marconi International Marine Company as product sales engineer for the UK shipping industry.



WOODS OF COLCHESTER, GEC's fan production company, is planning to attack the UK's roof unit market.

Spearheading this attack as roof unit product manager is Mike Johnson (above).

The back up sales drive and customer service should swing in to action with the appointment of Keith Hammond to area manager (London) and Peter Haigh as UK export liaison manager.

**TOPIC
COPY DATE
NOVEMBER
20**

Please ensure that all copy, photographs and advertisements reach the Editor by this date.

CAREER OPPORTUNITIES IN GEC

HEAD OF COMMERCIAL SERVICES — BASILDON
Marconi Avionics Ltd — Electro-Optical Division — The successful applicant will report to the Marketing Manager and will be responsible for a support team of five people. Duties include preparation and pricing of bids/tenders/quotations and negotiation of contracts. Legal training with a familiarity of contractual procedures essential, and some knowledge of H.M.G. conditions desirable. (Ref. 2061).

CHIEF PRODUCTION ENGINEER — STAFFORD
GEC High Voltage Switchgear Ltd — A senior appointment having overall responsibility for covering the provision of production equipment and methods, jig and tooling, plant layout, capital equipment justification, costs

and budgeting, toolroom and productivity services. Good degree in Mechanical Engineering necessary together with a broad experience of production engineering. (Ref. 2065).

TRAINEE PROGRAMMERS — GREAT BADDOW
GEC-Marconi Electronics — Chelmsford Computer Centre. — For Programmers and Analyst Programmers it provides a stimulating environment in which to develop a really interesting and challenging DP career. The Centre is equipped with modern IBM computers and over 100 visual display and keyboard terminals are attached for use in commercial applications and for programme development. To work on new projects and developments involving batch, on-line and real-time systems

THE following vacancies, open to both men and women, are among those which have been circulated during the past few weeks. If you wish to be considered or to obtain further information, you should initially approach the personnel manager of your own establishment.

MICROWAVE DEVELOPMENT ENGINEERS — FRIMLEY
Marconi Space and Defence Systems Ltd — For investigation into advanced tracker radar technology to work with microwave receiver transmitter systems, microwave test equipment, antennae, covering frequencies up to high millimetric bands. There are opportunities for Microwave Development Engineers and Microwave Test Engineers at various levels of seniority. (Ref. 2067).

DIVISIONAL CONTRACTS MANAGER — FRIMLEY
Marconi Space and Defence Systems Ltd. To

be primarily responsible for the efficient negotiation and administration of government and commercial type contracts and related procurement activities within one of the Company's divisions. The position calls for several years negotiation and administration experience and could suit someone currently a Senior Contracts Officer who is looking for career growth. (Ref. 2068).

CHIEF BUYER — LONDON SE20
Londex Ltd. — manufacturers of electrical and electronic controls and control systems requires a Chief Buyer to work in their new factory in SE20. Responsible for the Purchasing Section and several years purchasing experience of a technical nature is needed. Preferred age 30-50. (Ref. 2069).

MECHANICAL ENGINEER — LINCOLN
AEI Semiconductors Ltd. — An engineer capable of design and development associated with the equipment used in the manufacture of electronic components. Experience in factory services including the use of gases and acids will be an advantage. HND or Degree in Mechanical Engineering with several years experience in a relevant field. Some knowledge of electrics / electronics preferred. (Ref. 2070)

TV DUO FOR MARCONI

As the BBC'S autumn frequency change for radios one, two, three and four gets under way, Marconi Communication Systems of Chelmsford, announce that the delivery and installation of new medium wave transmitters for the corporation is well up to the tight timescale.

QUICKLY

The first nine have already been delivered.

Under this £2m contract Marconi is supplying 24 of its new transmitters, plus change-over units, duplexers and triplexers.

The first transmitter was delivered to Brookmans Park in May and this has already had over 500 hours "on the air". This was quickly followed by one to Washford, one to Burghead, three to Droitwich and a further three to Brookmans Park.

DELIVERY

Two more are to be delivered and installed at Westerglen.

The delivery of the remaining transmitters and the other switching equipment is scheduled for installation during 1979.

These transmitters are being used to update existing BBC transmitting stations, some of which were installed by Marconi in the early 1930s. When the re-equipment programme is complete the BBC's medium frequency UK network will be capable of fully automatic and unattended operation.

Granada Television of Manchester has also placed a million pound order with

Marconi Communication Systems.

The order is for 27 cameras from the Mark IX family of colour television cameras which were introduced in April this year.

The largest-ever order received by Marconi from a UK television contractor, 18 studio and nine portable cameras will be used to replace all those at present in the Granada TV Centre in Manchester and those used for outside broadcasting.

Delivery of the first five cameras was scheduled for September this year. The other cameras will be delivered to a phased programme over the next six months.

At the end of this pro-

gramme four studios will be fully equipped with new studio and portable cameras.

LARGEST

The outside broadcast vehicle will be equipped with six cameras, studio and portables.

Over 50 cameras from the Mark IX family have now been sold since they were first introduced to the public in April this year. This order, the largest by one company so far for Mark IXs, follows those received from other Independent Television Companies in the UK who have already received, and are using, the new equipment.

WELCOME BREAK

LOOKING forward to their forthcoming prize holiday in Madeira are Tony and Francis Hayden of Southport.

They are the lucky winners of a competition run by Reliance Systems of Wellingborough.

Entrants had to put in order of importance eight features of

Reliance's new generation room-call system for hotels, and their skills won them the luxury holiday in Madeira which they will be taking in November.

The holiday will be a very welcome break for Mr and Mrs Hayden, for they own the Broughton Guest House in Southport.

When replying to advertisements please quote
TOPIC

HOME STUDY

Study at home this winter for GCE or a professional qualification. Guaranteed courses for a wide range of 'O' and 'A' levels: accountancy; law; management; marketing; Chartered Institute of Transport; computer studies; etc. Send for FREE 100 page book 'Your Career' (without obligation). The Rapid Results College, Dept. C.P.I., Tuiton House, London, SW19 4DS Tel: 01-947 7272 (CACC accredited)

CARPETS SUPPLIED AT TRADE PRICES

plus 5% on most leading makes. Postal enquiries welcome. Send stamped addressed envelope to receive a quotation on any particular carpet without any obligation.

S. & L. CARPETS (TP)
17 Grand Parade,
Forty Avenue,
WEMBLEY PARK,
Middlesex, HA9 9JS.
Tel: 01-904 2339

Open Monday to Friday. Late shopping Wednesday until 8 pm.

A Privileged Offer...
To buy Trade Priced Jewellery at up to 60% Reduction

If you are a member of a union, staff association, Guild or organised body.
FREE. 70 page full colour brochure featuring hundreds of craftsman made pieces from few pounds — to over £1000 all at up to 60% discount off our normal retail prices.
Choose with (money back guarantee) confidence in your own home or visit our West London Showrooms and select from our vast stock. TRADE CARD SUPPLIED.
Call, write or 'phone to Metraco for free catalogue.

Metraco Dept GEC
179 King Street, London, W6. 9JT. Tel: 01-741 1278

Quality furniture, beds and carpets!
LEADING BRANDS AT UNBEATABLE PRICES

We sell all leading brands. Ordering is easy — just tell us what you want and we'll quote our own low price — backed by our firm price policy. We'll arrange credit and after sales service, too.
Just 'phone write or call in.
LONDON: 3 Horn Lane, W3. 01-992 6851.
BIRMINGHAM: 992 Tyburn Road, Pype Hayes. 021-373 4602 and 021-382 7101.
KENT: 31 Pickford Lane, Bexleyheath. 01-303 3787/8465.
READING: 17-19 Chesterman St., (off Southampton St.) Reading. 594203. **ALSO:** 32 Gould Road, Twickenham.

Staffords Furnishers
DELIVERY TO ANY MAINLAND ADDRESS

BEDLINEN — STAINLESS STEEL TABLEWARE — CRYSTAL
15-25% OFF LIST PRICES

SHOWROOMS OPEN 9.30-5.30 MON-SAT

TRUST OFFERS AWARD

THE WINSTON CHURCHILL MEMORIAL TRUST invites applications for one of its 75 annual Fellowships to be awarded in 1979.

The Fellowships are for a wide range of subject interests to be studied overseas.

No formal educational qualifications are required for these and the opportunities are open to men and women.

Further details of the scheme can be obtained by applying, on a postcard to, The Winston Churchill Memorial Trust, 15 Queens Gate Terrace, London SW7 5PR.

**TOPIC
COPY DATE
NOVEMBER 20**

MOTOR INSURANCE FOR GEC EMPLOYEES

ALSO COMPETITIVE RATES FOR:
HOUSEHOLDERS' COMPREHENSIVE INSURANCE
Post coupon TODAY for immediate quotation
ROBERT A. RUSHTON & CO. LTD.

Head Office:
190 ST. ALBANS ROAD, WATFORD, HERTS.
Tel: WATFORD 37111 (6 lines)
(NOT APPLYING IN NORTHERN IRELAND)

TO: ROBERT A. RUSHTON & CO. LTD.

NAME
ADDRESS
Age Full/Prov. Licence Yrs
Make Exact model
Capacity Value Year
Comp/TPF&T/TPO. Owner/and spouse/any driver
No. of drivers under 21
No. of cars owned
..... Yrs. No Claim Bonus. Renewal Date
Please give written details and dates of ALL Accidents
Claims/Convictions on separate sheet

For other enquiries please tick box.

Householders ☐ Life ☐ Mortgage ☐

GEC

CLASSIFIED

PLEASE send your classified advertisements to Miss Jackie Watling, TOPIC, The General Electric Company Ltd, 1 Stanhope Gate, London, W1A 1EH, by November 20, 1978.

Anybody is welcome to advertise in this section. There is no charge for GEC employees, their families or people who have retired from the company. For others, the current cost is 30p per word (minimum 10, maximum 70 words). Please make all cheques payable to The General Electric Company Ltd.

Please make sure to include your HOME address and/or telephone number in your advertisement. Thank you.

FOR SALE

BOY'S OWN ANNUAL. Bound copies of Boys Own Paper from 1884 to 1885. Any offers? Contact Mr P. D. Oakley, 9 High Ridge, Aldridge, Staffs. WS9 0DS.

CATAMARAN (marine ply). 16' x 7'6". Suitable for family sailing. Wooden mast, roller reefing, sails, anchor and Anzani outboard motor (not working). Boat needs minor repair and repaint. No trailer. £150. Tel: Chelmsford 66653 (evenings).

CANADIAN-TYPE chalet. Two bedrooms, WC, shaver, L-shape lounge with kitchenette. Price includes all furniture and fittings. Heybridge, near New Maldon, Essex. £3,000 ono. Contact: Dodinghurst 822712.

CASSETTE tape recorder — Wharfedale Dolby DC9, complete with leads. Perfect condition. £50 ono. Tel: Braintree 24616 after 6pm or weekends.

CLACTON. Two-bedroomed holiday chalet. Sleeps 6. Mains services, WC, shower. Popular site. Amenities include club and swimming pool. Letting service. Good investment at £3,650 ono. Fully furnished. S.a.e. details: Gill, 10 Quendon Road, Basildon, Essex or Tel: 0268-22480.

DINGHY. Wooden hull. 14ft Registered no. 5701. Valid certificate. Complete with main, genoa and spinnaker. Fitted boom cover, trolley, elvstrom self boilers. Well maintained and ready to sail. Tel: Farnham Common 2216.

DRASCOMBE DABBER 15ft 6in. Family day sailing boat complete with snipe trailer, seagull 40 plus outboard engine, anchor, bilge pump, canvas cover. Excellent condition. £1,400 save £500 on list. Tel: A. Jutton, Stafford Common 2216.

ESSEX DISCOS. Have you experienced trouble in obtaining a good disco, playing the music you want? Discount for GEC employees. Tel: Chelmsford 66443.

GETTING MARRIED. To complete the story of your wedding, apart from formal pictures, we offer your own "Love Story", a mixture of new special effects and delicately posed portraits, misties etc. We have wedding photography to meet everyone's budget. Advance reservations assure you of professional services. Tel: Pauls Photography, 01-595 0606.

GROSS Electric Cash Register. Excellent condition. Supervisor and manager keys. Any offers? Tel: Jacky Trawley or Mrs Kendrick on 01-908 2881.

HOLD a class in your home and learn about Tri Chem Liquid Embroidery Paint, the fun hobby product suitable for whole family to use. Ideal for Women's Institute groups, Youth Clubs, charity promotions. Free gift to all guests, plus special hostess gift. Commission on all sales. Operates on a national basis. For further details contact: Mrs Penny on Medway 574058.

MOTOR INSURANCE. Special rates arranged with the Zurich Insurance Company for all GEC employees. Free quotations — no brokers fee charged. Contact I. B. Hart-Davies Ltd, 4 Regent Place, Rugby, no postage stamp required. Tel: Rugby 2643. Also special rates for house contents, caravan, and boat insurances etc. Members of the British Insurance Brokers Association.

ORGAN. Estey American organ with 11 stops, knee swell and coupler. Good playing order, £200. Tel: Farnham Common 2216.

PORTABLE cassette recorder, model 3000M. Vgc. £80 ono. Kodak Pocket Instamatic as new, £7.50. Tel: 0245-60798.

SOFT WATER. 10% off water softeners to GEC employees. Fully automatic units by Permutit or Pennant. Three year guarantee. Full D-I-Y kits and instructions if required. Contact Soft Water (GEC), 77 Hantone Hill, Bathampton, Bath, Avon BA2 6XD.

STUDY AT HOME this winter for GEC or a professional qualification. Guaranteed courses for a wide range of 'O' and 'A' levels, accountancy; law; management; marketing; Chartered Institute of Transport; computer studies etc. Send for FREE 100 page book "Your Career" without obligation. The Rapid Results College, Dept CP1, Tuition House, London SW19 4DS. Tel: 01-947 7272 (CACC Accredited).

TIMBER frame picture window 7'10" x 5', fully glazed. Adjoining glazed door. Venetian blind to match. All good condition. Offers invited. Tel: Chelmsford 467438.

WEDDING DRESS. Size 16. Victorian style with guipure lace on bodice and cuffs. £45 ono. Tel: Three Rivers 5169.

HOLIDAYS

ADVENTURE HOLIDAYS FOR ADULTS.

An introduction to outdoor pursuits including climbing, sailing, walking, caving etc., combined with good food and comfort in beautiful Peak District of Derbyshire. Brochure from Edale Adventure Holidays, The Warren, Edale via Sheffield. Tel: Hope Valley 70256.

BARMOUTH. North Wales. Friendly accommodation. B&B and evening meal. Close to sea. Highly recommended. Contact Mrs Williams, Awel-Deg, Dyffryn Ardudwy, Gwynedd. Tel: Dyffryn 431.

BOURNEMOUTH. B&B/evening dinner optional. Double and family rooms (H&C all mod cons.). Ample parking. Lounge. Colour TV. Baby sitting if required. Near Southbourne beach and Tucktonia. Moderate terms (no VAT). Write 'AMITE' Guest House, 1247 Christchurch Road. Tel: 0202 427255.

BLACKPOOL. Family owned private hotel. Good food, clean, comfortable bedrooms. Cocktail bar, lounge with colour TV. Sun lounge. Open all year. S.a.e. For brochure and terms to Mr and Mrs Holden, Channings Hotel, 557 New South Promenade, Blackpool. Tel: Blackpool 41380.

BRACKLESHAM BAY, Sussex. Fully equipped 4 berth caravan. Electricity. Gas cooking. Adjoining sandy beach. Club room. Baths. Two showers. Laundry. Main drainage. Unfortunately, no dogs allowed. For reasonable terms and availability contact Stephen Smith, 21 Ebury Road, Watford, Herts. Tel: Watford 31649.

COLWYN BAY. North Wales. Pleasantly situated close to town centre. All amenities. Lounge with colour TV. Separate tables. H&C all bedrooms. B&B. Evening meal optional. Contact Mrs M. G. Wittstein, Eversley, 21 Woodland Park, Colwyn Bay. Tel: 0492 33289.

CLACTON. Four berth caravan to let for summer holidays 1978. Permanent site at Little Holland, Clacton. Electricity, gas and all amenities. Club house, shops, amusements all on site. £22 per week. Contact Mrs Rodgers, 15 Ashfields, Pitsea, Essex. Tel: Basildon 726729.

DYFED COASTLINE. Quietly situated eight berth caravan. Convenient for beautiful Dyfed coastline beaches and places of interest. £40 low season. £50 high season. Contact Mr T. Davies, 'Erwlon', Cwmcou, Nr Newcastle Emlyn, Dyfed. Tel: Newcastle Emlyn 710711.

ENTERPRISE our name. Value for money our claim. We are close to Torquay's beautiful beaches, near to the shops, and night spots, yet far away from the noise

and bustle. We offer you fine fare, good service and comfort. Write now for your brochure. Please state weeks and type of room required. Contact ENTERPRISE Hotel FREEPOST I (no stamp needed), Torquay TQ1 4BR. Tel: 0803 24772.

GREAT YARMOUTH. B&B/evening dinner. H&C all rooms. Good reductions for children. Near sea front. Highly recommended. Contact Mrs Georgiou, 'Sandalwood' Guest House, 44 Nelson Road South, Great Yarmouth, Norfolk. Tel: 0493 57401.

GREAT YARMOUTH. 'St Eloi' Guest House. Near sea front and waterways. B&B and evening meal. H&C all rooms. Own Key. Homely atmosphere. Reasonable terms from £28-£32 per week. Regret no vacancies from July 29th-August 19th. Contact Mrs Killick, 86 Walpole Road, Gt Yarmouth. Tel: Gt. Yarmouth 2057.

HOLIDAYS IN CORNWALL. Lizard Peninsula. B&B and evening meal. H&C in all rooms. Homely atmosphere. Central for coast and Helford River. Mid-week bookings accepted. Moderate terms, on application from Mrs P. Reed, Little Tregear, Mawgan, Helston, Cornwall. Tel: Mawgan 206.

HIGHLANDS. The Highlands start at Kinross on the banks of bonnie Loch Leven, surrounded by the Bishop/Bentary/Ochils and Cleish Hills. Famous trout fishing, 18 hole golf course. Close to Perth, Edinburgh, Stirling and the famous St Andrew's golf course. Contact Mr and Mrs R. Barnes, Phileuan, 36 Muirs, Kinross.

NEWPORT, Isle of Wight. 'Brair Bank'. Friendly family guest house. Colour TV, separate dining tables. H&C all rooms. B&B and evening meal available. Moderate terms. Children specially catered for. Contact 147 Carisbrooke Road, Newport, IOW. Tel: 098-381 2784.

PAIGNTON. Family holiday accommodation. Self-contained, furnished with all facilities (cutlery, nylon sheets, etc.). Kitchen, three bedrooms, bathroom, WC. Car space in garden. Use of garden. Booking is from Sunday to Sunday. Depart by 10 am. Accommodation ready by 12 noon. A deposit of £10 per week is required when booking. Terms £35 per week (electric on meter). Contact Mr and Mrs Aleksic, 14 Great Headland Crescent, Preston, Paignton, Devon.

SELSEY. Join Phyll & Terry Sanders at Rushmere, a small family run, Olde-World Hotel. Relaxing lounge colour TV, peaceful garden, home cooking & licensed bar, only 100 yards sea. Children welcome at reduced rate, self contained flat (hotel service), 1 downstairs bedroom, car park, village

famous for crab, lobster, golf, tennis, close to Chichester, Portsmouth, Bognor. Contact Rushmere Hotel, Millfield Road, Selsey, West Sussex. Tel. Selsey 2612.

SOUTH DEVON. Delightful 14th C guest house, small but comfortable, situated on the fringe of Dartmoor yet near to the beautiful south Devon coast and only 16 miles from the City of Exeter. Excellent food and personal attention will ensure a happy holiday. Bed, breakfast and evening dinner from £7.75. Weekly terms. Please send for brochure to Mr & Mrs Williams, The Manor House, Bickington (062682) 457. A British Tourist Authority Commended Country Guest House.

SOUTH DEVON. 200 yds. sea front and beach, close to shops and all amenities, car park, B&B and evening meal, or just B&B. Contact Amaryllis Hotel, 14 Sands Road, Paignton, South Devon. Tel: 559552.

SOUTHSEA. Homely guest house. Bed & breakfast, evening dinner optional. Double and family rooms. H&C water, shaver points in all rooms and central heating. Comfortable lounge with colour TV. Pleasant dining room. Excellent food, 4 mins. walk to sea front/beach. 2 mins local shops and buses to all parts of city. Details Mrs T. Fryatt, Ashleigh Guest House, 14 Craneswater Avenue, Southsea. Tel: Portsmouth (0705) 733264.

SUSSEX. Three bedroomed modern town house, select resort of West Whittering, near Chichester. All amenities, including TV, safe sandy beach. Tel: 024-366 2028.

SKEGNESS — Detached bungalow, two bedrooms, lounge, dining room, bathroom, kitchen and garage. All amenities, TV, sleeps up to seven. Close to sea and town centre. Contact D. Jackson, 158 Lutterworth Road, Blaby, Leics. Tel: Leics. 773225.

WALES. Towyn/Aberdovey. Self-catering, 4 Bedroom comfortably furnished cottage, with lounge, bathroom, kitchen, parking area. Sleeps 8 adults/drop side cot. Adjacent shops and beach. Convenient for bathing, sailing, fishing, golf. Delightful surrounding country and scenery. Vacancies July and September. Terms very reasonable with reductions October onwards. Write or Tel: J. Hamer, 49 Oldcroft Road, Walton On The Hill, Stafford. Tel: Stafford 61337 or Lilleshall (Salop) 3329.

UPLYME on Devon/Dorset border, self contained flat sleeping six, own kitchen, lounge, bathroom. Adequate car parking in grounds. Enjoy sea and country with golf and sailing available. Tel: Lyme Regis 3065 for further details and brochure.

WALK, wine, dine, sleep. The perfect out of season weekend break. Peak park.

Brochure from The Warren, Edale, Derbyshire. Tel: 0433 70256.

WINTERTON. Nr Gt Yarmouth. Brick built luxury holiday chalet. To let. Sleeps up to six persons. Club. Disco. Swimming pool on site. Contact Mr W. O'Leary, 14 Dudley Avenue, Waltham Cross, Herts. Tel: Waltham Cross 21004.

CALPE (near Benidorm). Two bedroom flat, sleeps 4. 50 yds. sandy beach, shops etc. maid service available, inclusive charter flights. Apply early, C. V. Weston, 199 New London Road. Tel: Chelmsford 81662.

GREECE — Self catering or bed and breakfast in private villa near sea. Full details from Mr & Mrs Horlsey, 44 Kondill Street, Kalamaki, P. Faliron, Athens.

MAJORCA. Cala Mayor, two miles from Palma. Vacant from September to December. Contact A. E. Orchard, 70 Ripon Way, Borehamwood, Herts. Tel: 01-953 9287.

WANTED

A COPY OF 'QUEEN MARY RMS — Log of Voyage 516' the last cruise from Southampton to Long Beach. Booklet published by Southampton Corporation about 1967/68. Contact Mr J. C. Waser, 4 Deane Road, Hillmorton, Rugby CV21 4NZ.

OLD WIND-UP GRAMOPHONE. Also old '78' records and sheet music. Contact John Lake, 20 St Andrew's Road, Coventry. Tel: 711344.

28 MM LENS for Kiev camera. Prewar contax fitting. Contact: J. Glasgow, 30 Johnson Road, Great Baddow, Chelmsford, Essex.

CREED 75. Have you a makers manual for this teleprinter? If so may I borrow for copying or purchase it from you? Any material will be returned as received. Please contact Mrs V. Balson at 57C Kimberley Court, Bradley Road, Patchway, Bristol, to arrange postage etc.

RECORDS. 50s and early 60s Rock and Roll. Pop, 45s and LPs. Money for your unwanted discs. Tel: 0634-364661.

WHAT CAR? Back copies of January to March 1978. To borrow or buy. Tel: Robert Kletz 01-902 9275 (evenings).

BEE-KEEPER'S honey extractor. Contact J. Sulston, 79 Wordsworth Road, Rugby. Tel: 814480.

OLYMPUS. Pen F wide-angle lens: preferably G. ZUIKO Auto W 20mm/f4, or 25mm/f2.8. Also any other Pen F Lenses or accessories. Contact Roger Sweeny on Chelmsford (0245) 68485.

TOPIC
COPY DATE
NOVEMBER 20

JACK WHITE'S BIG SURPRISE...

JACK WHITE, store keeper with Satchwell Control Systems at Slough, retired after 55 years of service. But, this was a retirement with a difference.

BY TOPIC
REPORTER

Unknown to Jack Satchwell personnel officer, Jean Williams, had painstakingly gathered together 16 of his workmates from 55 years ago. Some Jack had not seen since 1923, when the photograph, left, was taken.

Looking at the two pictures — taken in the same position at Satchwell's Buckingham Avenue works — you can see how everybody has changed over the years. In the original Jack, front row, left, is a young lad just 14 years old. He had just started work.

ALIVE

Jack and his wife Annie, whom he met at work, were the last to arrive for the retirement celebrations. Overwhelmed by his surprise re-union, all Jack could say was: "It's the biggest surprise of my life. I think it's marvellous".

The good old days were soon alive once more. As Mrs Gladys Frost put it: "This afternoon has unleashed a whole mountain of memories and, it is all a bit of a giggle".

PECULIAR

One gentleman, Mr Keer, not wanting to miss the occasion had broken his annual holiday in the West Country to travel to Slough.

The gathering was quick to tell of Jack's initiation ceremony. They laughingly described how he had been pinned to the floor and "painted in a most peculiar place".

CHASED

Jack recalled how his initial earnings had been 10 shillings a week and added: "Then I think they overpaid me".

He thought that the biggest difference between working life in the 1920's and now, was that today, "You are not chased up as you used to be".

In the early days Jack was described as a confirmed bachelor. Apparently he used to mutter: "You women, you'll be the death of me". That was until a new recruit joined the company...

Annie, now Jack's wife, recalled how he used to throw balls of paper at her from his storeroom. She says: "I only threw one back and that was that. Eleven months later we were married".

DISPLAY

So popular was Jack at Satchwell that the tool stores were known as Jack White's stores. Says Ron Jones, supervisor of the Buckingham Avenue works: "We're going to change the name of Jack's successor to Jack White. That way we'll save any confusion over the stores".

Mr Jones also explained how Jack unknowingly helped Satchwell's safety campaign. "When the lads leant over the stable door of Jack's storeroom, their ties sometimes dangled inside. Jack would snip the ends off with his scissors and display them on the wall. It was his own initiation ceremony."

"But, it also made people realise how dangerous it was to have clothing hanging over machinery".

During the afternoon Alan Lonsdale, Satchwell's personnel manager, presented Jack with a chest freezer and a pair of binoculars.

TELEGRAM

He told how, come rain or shine, Jack opened the factory at 6.30am every morning and how, in all his 55 years, he had never been late.

Wishing Jack every success for the future he read out a telegram from Sir Arnold Weinstock, managing director of GEC. It

read: Congratulations on 55 years valuable service to the company and the community. Best wishes for a long and happy retirement.

Original photo. Back row, l to r, Mrs Winifred Gartside; Unknown; Mrs Dorothy Wild; Bill Bailey; Sam Keer; Mr F. Halley; Jack Hasthorpe; Mrs Florrie Moule; Mrs Ciss Drake; Mr J. Swift; Mr T. Flight. Middle row: Mr Johns; Jim Woodham; Miss Seager; Mrs Rona Stinton; Miss Blay; Mrs Phyllis Hasthorpe; Mrs Gladys McGaw; Mrs Gladys Frost; Mrs Violet Stevens; Leonard Satchwell. Front row: Mrs Mary Malster; Jack White; Mrs Doris Sargeant; Mrs Mabel Doig; Mrs Ernestine Halley; Mrs Winnie Lane; Mr T. Wing.

Today. Back row: Winnifred Gartside; Dorothy Wild; Sam Keer; Jack Hasthorpe; Florrie Moule; Ciss Drake. Middle row: Jim Woodham; Rona Stinton; Phyllis Hasthorpe; Gladys McGaw; Gladys Frost; Violet Stevens. Front row: Jack White; Mabel Doig; Ernestine Halley; Winnie Lane.



GEC Traffic Automation of Borehamwood has won a contract worth over £49,000 to supply road traffic control equipment for a flyover, to be built at the junction of the A12 and the A130 in Essex, known locally as the Army and Navy Roundabout.

This site is all too often the scene of considerable traffic congestion, with long tailbacks and delays to traffic on all approaches.

EMERGENCY

To ease the problem, a single lane flyover is to be built to carry through traffic on the

A130 over the roundabout on a 'tidal flow' principle.

Closed circuit television cameras will enable operators at the Police Headquarters continually to monitor traffic on the flyover and an emergency telephone will be connected from the centre

of the flyover to the control room.

All this equipment will be installed for Essex County Council by GEC Traffic Automation, under the contract received from the main contractors, G. Percy Trentham Limited of Pangbourne, Reading.

ELECTRIC MELTING FOR RUGBY

BY TOPIC CORRESPONDENT

GEC Turbine Generators is to introduce electric melting to its foundry at the Willans works in Rugby where turbine components, including giant casings are produced.

An order valued at close on £200,000 has been placed with another GEC company, Birlec, of Aldridge, Walsall, for a 10t capacity normal frequency coreless induction furnace to replace one of the three cupolas at present in operation.

RATING

It is planned to operate the furnace overnight,

using power generated on the GEC site at Rugby.

With a rating of 2000kW it will be capable of producing 3.8t/hour of SG iron from a charge of foundry returns and steel scrap.

IDEAL

The electric furnace is ideal for this duty, as the intense stirring action generated within the metal bath will ensure that recarburising additives and inoculants will be homogeneously distributed throughout the molten metal, thereby giving consistent, high quality castings.

HOTPOINT BEAUTY

ATTRACTIVE PAMELA BERRY, an operator at Hotpoint's Welsh site, is the new "Miss Hotpoint 1978, Llandudno".

Pamela was chosen at the sports day gala night dance held in the club house of the company's social and sports club.

Among her hobbies blonde-haired Pamela lists horse riding, sea fishing and dressmaking.



OSRAM LIGHTS UP THE STARS

THREE first prizes of holidays for two in Hollywood, USA, are the top awards in a new £15,000 "Trip to the Stars" national promotion linked with domestic bulbs from Osram-GEC.

Among the many highlights on the two week holiday schedule are visits to Disneyland and Las Vegas, just two of the opportunities for each of the winners to use the £150 spending money which is also provided as part of the first prizes.

RECORD

"Trip to the Stars" is the latest in a series of Osram promotions following two of the Wembley company's most successful promotions ever — the 1976 "Holiday Home Competition" and the 1977 "Around the World" competition. These attracted record entries and with "Trip to the Stars" offering many more prizes, it is expected to continue this success.

PRIZES

In addition to the three top prizes, over 100 other prizes are offered including five second prizes of GEC Starline 26" Colour TVs with de luxe remote

BY TOPIC REPORTER

control; ten third prizes of GEC Soundeck music centres with combined record player, Dolby cassette recorder and radio; twenty fourth prizes of 15" GEC Portable TVs, and one hundred fifth prizes of GEC Starfinder AM/FM portable radios.

IDENTIFY

To enter the competition, customers must purchase either a 60w or 100w Extralite or Filtalite bulb, which list the competition details and conditions of entry on the sleeves.

The customer must then identify and match the faces of five stars with a list of ten names. The silhouette of a sixth star must also be identified,

and the entrants are asked to list the first words they would use (maximum of five) if introduced to this star. The completed entry form plus one other Osram bulb sleeve is then sent to the competition address.

The closing date for entries is February 28, 1979.

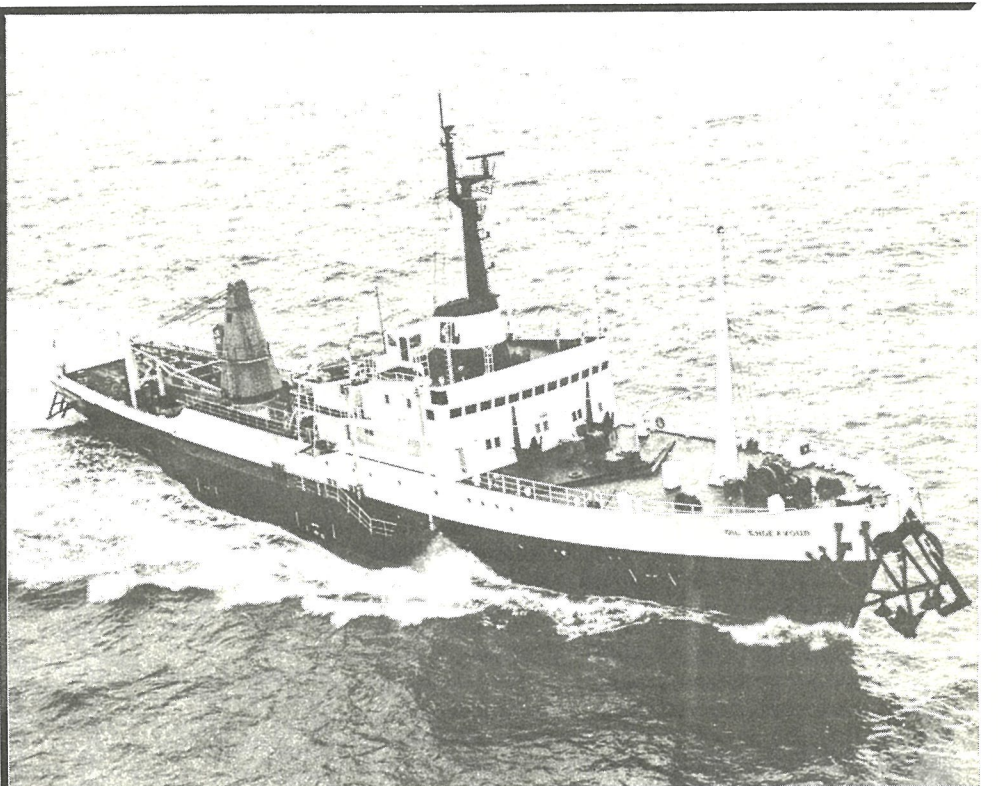
The competition is supported by extensive advertising in a variety of women's magazines, and in Sunday and daily newspapers.

Trade support is provided by a full range of point-of-sale material. By utilising the display material, retailers can participate in a regional display competition which offers prizes worth in total £6,000.

QUALITY

"The trade has come to expect this standard of exciting sales promotion from us," said Ron Bosanko, Osram-GEC's commercial director.

"It benefits the whole market for quality bulbs and re-emphasises the support and co-operation available from Osram."



GEC AIDS DIVING SUPPORT VESSEL

ORIGINALLY a trawler, the ship "Oil Endeavour", seen in our picture, above, has been converted to a diving support vessel. In order to maintain station for diving operations, the 1500 tonne ship is fitted with a dynamic positioning control system designed, supplied and commissioned by GEC Electrical Projects of Boughton Road, Rugby.

The system uses either an underwater acoustic system or a line-of-sight radar to measure the movement of the vessel.

The system is capable of operating with up to three beacons transmitting simultaneously at different frequencies.

The radar is of the range/bearing type, and consists of two almost identical stations.

SPECIAL

This information is fed into a GEC mini computer that has been specially toughened for marine service. The output signals from the computer control the effective thrust developed by the ship's thrusters to maintain position in up to force 7 weather, and a 1 knot current.

BEACON

The underwater acoustic system is a short base line type with four stalk mounted hydrophones. Underwater beacons on the seabed transmit every second, and the timed arrival of the signal at three hydrophones is used by the computer to determine the exact position of the beacon.

One is mounted on the ship's mast, and the other is located within line-of-sight at a fixed point remote from the ship. The antennae at the two stations establish a microwave link and remain locked together regardless of ship motion. The angle of the remote antenna is transmitted to the ship, and by timing pulses between the two, the range is established.

The computer then uses the range and bearing information to establish the position of the ship relative to the remote antenna.



Photograph: Courtesy of the Coventry Evening Telegraph.

SEVEN PRETTY MAIDS IN A ROW

Lana Anderson, Michelle Bridges, Lorraine Cadden, Jacqueline Douglas, Kay Foster, Sandra Nicholls and Joanne Slack, reading left to right, are all sweet sixteen and have been

accepted as telecommunications technician apprentices at GEC Telecomunications in Coventry.

APPRENTICESHIP

Of 51 young appren-

tices selected by the firm, nine, including 16-year-old accountants Julie Forster and Joy Walford, are girls.

There were 40 girls among the 500 youngsters who applied for apprenticeships.

Last year only two girls joined the firm as trainee technicians, and it is hoped that this year's magnificent seven will prompt more girls to take up technician apprenticeships in industry.

**TOPIC COPY
DATE IS
NOVEMBER 20**