

SECOND QUEEN'S AWARD PRESENTED



ONE annual event which will not lose interest as the years go by is the presentation of the Queen's Award to EFA. We have earned it this year for the second year running and the company's export performance allows us to look forward with a degree of confidence to the years to come.

Lord Cornwallis, Lord Lieutenant of the County of Kent, making the formal presentation on November 11 said, "It is a happy thing that here at Rochester you are beating the World . . . To do what you have done is a very great achievement, of which you can be intensely proud."

He went on to say "You must remember that today I am the Queen—I also am in the red—and this award is made by her personal order and by her personal wish. I am here to say thank you to a great organisation". The official scroll recording the award is signed personally by the Queen and by the Prime Minister.

Mr Pateman, EFA's Managing Director, replying to Lord Cornwallis, noted that 40 per cent of



Lord Cornwallis presents the official scroll of the Queen's Award to Mr Pateman, EFA Managing Director. On the right is Mr Robert Telford, Managing Director of GEC-Marconi Electronics.

EFA's production is now being exported, and said that "Some 2,000 people here owe their jobs to the fact that we have been successful in the export drive". He continued "As a result of your efforts, you may well have secured for us a permanent place in the World markets. I hope that soon our 2,000 employees working on export products will be increased to 4,000".

With a total of more than 4,000

employees, not including Elliott-Automation Control Valves, EFA is now the largest industrial employer in the Medway towns. Only the Royal Navy dockyard employs more people.

We have already learned that exporting is a tough business and certain to continue to be so. The Queen's Award is a positive national recognition and encouragement in what often seems to be an uphill road.



After the ceremony, Malcolm Moulton (TACD) retrieves the Concorde autopilot controller, Bill Didcote (EFA) carries the Queen's Award emblems and scroll. With them are Gerry Millward (MACD) and Colin Stone (EFA).



Children's Christmas Party

More than 1,500 children attended the two Elliott children's parties held on December 6 and 13. Many Elliott people helped to organise and run these annual events, including the pantomime "Babes in the Wood—Cowboy and Indian Style". Above, Jim Collins as Long Tom Talkaway, on the left, faces Tom Crooks (IND) as Wicked Dr Morgan, Pat Claydon (Fisher), Len Milton (IND), Bert Hoggart (IND) as bar keeper and Maureen Brignall (EDP). Below, the children caught in the new Film Club's floodlights as the event was recorded on movie film. (Pictures here and opposite by Peter Tromp).



THE only square thing in this picture is the Union Jack. As the strange writing indicates, the scene is in Tokyo, where Fred Haskett, EFA Marketing Executive, and Geoff Rands, IND's sales manager, were showing the EFA flag at the Tokyo Aerospace Exhibition in September. The most welcome visitor, shown here, is HRH Princess Margaret. She was followed by Prince William of Gloucester, President of the Board of Trade Mr Anthony Crossland, the British Ambassador to Tokyo and senior members of the Japanese Government and aircraft industry. Main EFA exhibit was the Sword navigation and weapon aiming system, which aroused considerable interest in Japan. Fred Haskett reports that Tokyo was one of the most productive exhibitions he has experienced.

NEW LOOK IN TOWER ONE

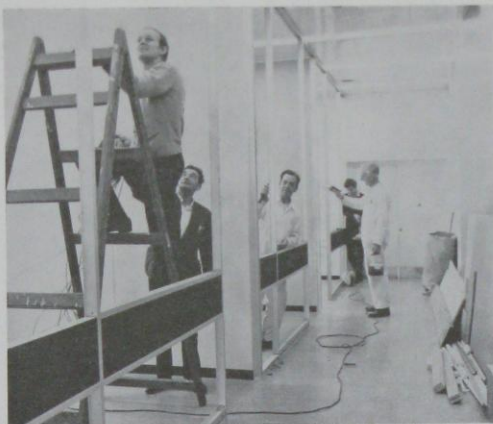
A GENERAL post in offices and the screech of power saws has been going for some weeks now as the management offices on floor 4 of Tower 1 are remodelled to make better use of the available space. Stacks of partition panels and temporary screens shift from hour to hour and people are moved from office to office. Some fourth floor people visiting outside Rochester are heard to ask "If my secretary rings, be sure and ask her where my office will be tomorrow morning".

New partitioning with glass inner walls and new curtains are replacing reeded glass and grey steel. Alfred Bird, resident telephone engineer is constantly busy reuniting people with their telephones. The overall plan includes provision for a film-projection and conference room.

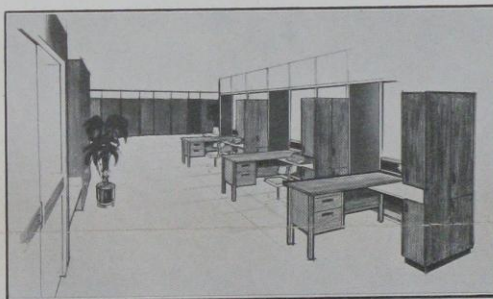
First to be accommodated in the new offices were Dr B. J. O'Kane, managing director of Marconi Elliott Avionic Systems Ltd, and Mr F. J. A. Mangeot, Financial Director of the new management company. Dr O'Kane was formerly with The Marconi Company. Mr Mangeot joined EFA in 1962, but spent the last three years in Elliott-Automation's head office in Portland Place.

The fourth floor seemed well appointed when Tower 1 was built years ago, but has fallen progressively behind as the second and third towers were built and the Flying School, huts, main works areas and the data processing department were brought up to modern standards.

More intensive use of space is part of the overall scheme of relocating divisions and developing management procedures.



Building the new offices on the south side of Tower 1's floor 4 are, left to right, J. C. Hazell of GPO Telephones, Alfred Bird, resident telephone engineer, George Briggs and "Ash" Houghton, Elliott painters and R. Christopher of Deskev (Picture by Keith Woolmer).



Artist's impression of the new Floor 4 layout with a reception area at the north end. The potted plant is not a grape vine.



(Picture by Valerie Evans)

"STAFF" ELLIS MOVES ON

AFTER 15 years with Elliotts, during which he has made major contributions to virtually every mechanical engineering design in EFA, "Staff" Ellis has left the company to work on his own as a consultant.

"Staff" was one of EFA's Australians, though he had lived in England since he joined Handley Page at the outbreak of World War 2. His contributions to EFA projects, from actuators to inertial platforms, has been tremendous. For some years he managed Flight Automation Research Laboratory, and his final assignment was to build up the quality control organisation. His cheerful smile and engineering talent will not be too far away. Already he has come back to assist in sales exercises.

LANGUAGE Barrier

As EFA goes more international, Our language problems increase. We're French and German to cope with As well as Americanese.

But the most difficult problem encountered Is not Russian and not Japanese. It's right here at home at Rochester And is called TAC-ese.

They talk about DAMOCs and DAPAs And that I'm afraid's just a start. There's MODATS and AMI and DADA And a delightful thing they call DART

If this example is taken up elsewhere Then these problems will come to a head.

We'll give up our research department And have language laboratories instead.

Then there'll be many occasions, And more and more frequent, I fear,

When our visitors ask in amazement "Doesn't anyone speak English round here?"

Battle of Britain



George Hannan retired as manager of MACD model shop on November 7, after 14 years' service with the company. Unknown to him, his friends and colleagues got together and staged a farewell party at the Huntsman. George plans to go to the United States next year to visit his daughter and, before he left, Divisional Manager Derek Jackson presented an appropriate gift—luggage.

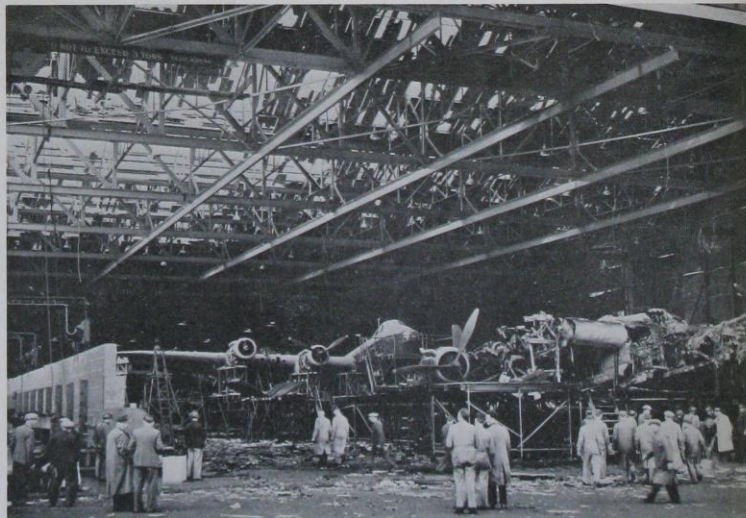
George Hannan's place has been taken by Terry Woolmer.

DRAMA UNFOLDS

ALL those who have enjoyed the previous productions of the Elliott Drama Society (TEDS) should note that rehearsals have started for their third production. "The End of the Honeymoon" by Sam Bates is being produced by ex RATS member Fred Haddell (AEID)

The plot is that Howard Shepton, played by another former RATS member Malcolm Campbell (AEID), returns to the ancestral home where at least two girls are expecting to marry him. They are shocked to find that Howard is already married to former actress Greta, played by Sue Beeley. Comical situations arise caused by an old feud between the butler and the gardener, both of whom are in love with the cook. The climax of the play takes place when Greta's former husband, presumed dead, turns up at the house.

The antics of these characters should provide very good entertainment. It is hoped that the production will be staged by mid-February.



The view from goods inwards towards sheet metal . . .

date, August 15, 1940. This was Airport Works, Rochester, following the largest German bombing effort during the Battle of Britain when part of a force of 250 German bombers had attacked the new Short Brothers Stirling bomber assembly line. Six partly completed Stirlings and the finished parts store

were destroyed and production was considerably delayed.

The hangar doors are now permanently closed and the personnel offices have been built under the far wing of the wrecked Stirling.

This picture was first published in the new edition of "The Narrow Margin", the definitive history of the Battle of Britain by Derek Wood and Derek Dempster, published this summer.



Netball Double Victory



THE Elliott Netball Section added another victory to their list of successes this season. On entering the Maidstone Netball League for the first time, they won both the League and the Rally.

Our picture above shows the Maidstone Team Linda Eason, Dawn Thompson, Yvonne Long, Beryl Solly (Fuze), Joan Thompson (FARL), Janet Smith and Sadie Springate receiving their awards from Alderman Peter Robinson.

The Elliott Blue Team won the Medway Netball Trophy in the Medway League Division 1. Alderman T. Fry presented the trophy to Beryl Solly (Fuze) at the annual dance held in October at the St George Hotel. Beryl, who has been a member of the club for five years, will be greatly missed by all her friends. In January, she leaves the company to go to Holland, where her husband has recently taken up a position at Philips International.

Joan Thompson (FARL) will be taking over as Club Secretary after Beryl's departure.

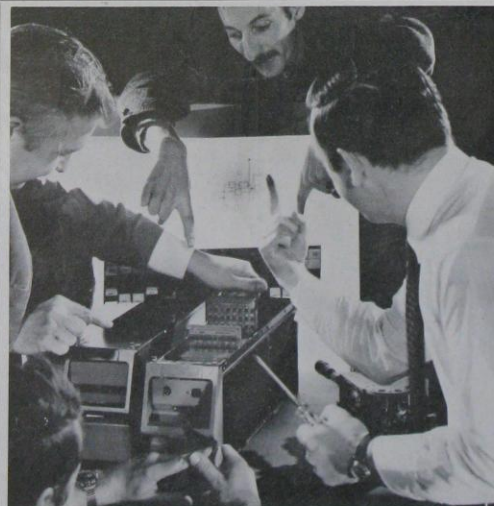
New members are welcome. Training is every Thursday evening between 7 and 9 at Gordon Barracks, Darland Avenue, Gillingham.

THE children's Christmas Party was the first assignment covered by the newly formed Elliott (Rochester) Film Unit. Producing under the name of "Pathway Films", this is yet another branch of the Elliott Social Club. Meetings are held every Tuesday at 5.15 p.m. in the snack canteen.

The aim of this film unit is to shoot their own films and assistants of all kinds including actors, camera technicians and studio hands are urgently needed. If you feel you are a budding movie enthusiast, you will be very welcome. The choice of the subject will be thrown open to club members who may choose their own production team, write their own script or brave the moving camera.

A trip to visit Elstree Studios is tentatively planned for the new year. Anyone interested please contact Mike Bounce or Vivienne Beaver both in MACD Tech Pubs on internal 290.

MOVIES ON THE GO



Engineers can make do with plain pictures of black boxes against a blank background, but for "yer actual publicity picture" you need human interest, warmth and atmosphere. Someone ought to be working with a screwdriver, inspecting, adjusting or pointing to a significant feature. Choose experienced, intelligent-looking people, and whatever you do, keep the photographer from popping up over the back of the scenery. Hold quite still, now. There, I'm sure the Times will print that!

JOHN LOWE REMEMBERS

John Lowe, who retired from EFA Library due to ill health earlier this year, has written to thank his many friends from various divisions most warmly "for their expressions of anxiety, prayers, messages of sympathy, encouragement and very sincere wishes for my full recovery by my wife and myself during the last twelve months". Thanks also for the "most superlative garden chaise longue, which I was able to enjoy and put into immediate use . . . the bottle of "hard stuff" completed the soprific."

John has been taking life very quietly in Borough Green, but extends an open invitation to his former colleagues.

EQUIPMENT IN ACTION



Crosswind Steering Computer for Lockheed C-5A Galaxy

IN order to be able to land on short runways in cross-winds of over 40 knots, when the pilot will be holding off drift of as much as 20 degrees, the C-5A Galaxy can offset all its five groups of landing wheels prior to touchdown so that the pilot need not turn the aircraft into alignment with the runway before touching down.

After touching down, the four main landing gear legs are automatically rotated to cancel out the drift angle, while the pilot steers the nosewheels up to 6 degrees left or right by moving the rudder pedals. While taxiing, the pilot steers the nose-wheel up to 60 degrees left or

right with a tiller wheel and the rear main landing gear legs swivel to accommodate tight turns.

The computer which co-ordinates these landing gear adjustments was designed by TACD and is now being manufactured by MACD and the indicators by AEID.

The computer is in the background. Units in the foreground are, left to right, the steering input actuator, pilot's tiller controller, one of two main landing gear position indicators and the main indicator for crosswind off-set and nosewheel steering angle.



THIS is the first British Jaguar, the S06 prototype which is now flying from Warton airfield, near Blackpool. It will be the first to carry IND's digital navigation and weapon delivery system, for which the production order was expected as we went to press. This order, incidentally, probably involves the largest single batch of digital computers ever ordered in Europe.

Meanwhile, other aircraft fitted with EFA products are putting up their own milestones. Concorde 001, flying from Toulouse in France with TACD autopilot system, has now exceeded Mach 1.35, or just over one and one third times the speed of sound.

Across the Atlantic, the US Navy's A-7E Corsair, fitted with ADD's head-up display, has begun sea trials from the

nuclear-powered aircraft carrier Independence, which is also equipped with ATED's automatic test equipment (See story on back page).

The huge C-5A Galaxy, largest aircraft in the World, broke an all-time record recently by taking off from the USAF Edwards test airfield at a gross weight of 796,067 lb. This is close to 400 short tons, and probably at least as heavy as Columbus' entire three-ship fleet on his voyage of discovery to the New World. Eight C-5s are now flying, with the ninth due for delivery to the US Air Force any day now. There will eventually be 81 of these giants in service, each carrying three Elliott systems, FID's air data computer, TACD's cross-wind steering computer and MACD's Energy Management Computer EMAC.

SIX MILLION MEALS —AND 27 YEARS

MRS SAUNDERS RETIRES

THE end of December sees the completion of more than a quarter of a century's service in the Short Brothers and Elliott canteens for Mrs S. Saunders, our canteen manageress. We estimate that she must have taken part in preparing something like 6,000,000 meals during that time.

She joined Short Brothers at the Esplanade factory beside the Medway River in March 1942, moved up to Airport Works in 1945 and transferred to the Elliott companies when Shorts moved away. She has been manageress for the last 22 years.

She and her staff prepare about 600 meals per day, a number which surprisingly has remained almost constant throughout the 27 years. In addition she has arranged catering for all the Elliott functions in the canteen, such as children's parties and Christmas lunches.

Asked if there had been any major changes during the years, she said that the main one had been the steady increase in the cost of food. She remembers during World War 2 having to go to the shelters during air raids and leaving hundreds of sausage rolls to the care of the fire-fighting teams—occasionally with scorching results.

Mrs Saunders will be sadly missed by her staff, many of whom have served with her for more than 15 years. A farewell presentation was made at a special dinner dance on December 13. She plans now to take life easy and look after her sister.



DRINK CONCORD(E)

THERE'S a Concorde pub now at Otterham Quay Estate, Rainham, brand new and with all the modern trimmings. And TACD played a good part in the launching arrangements. It so happens that then TACD Chief Buyer Charles Berry's daughter works in the Whitbread Premein office in Maidstone. She appealed to her father, who arranged for Richard Cummings (TACD Tech Pubs) and Malcolm Moulton (TACD Sales) to provide pictures for the pub sign painter and produce the large, framed montage of a Concorde flying over the EFA factory shown below.

The launching ceremony was performed on Guy Fawkes day by Lord Cornwallis, who is chairman of the brewery as well as Lord Lieutenant of the County. Lord Cornwallis recorded TACD's part in Concorde as well as their contribution to the pub in the most generous terms before



Lord Cornwallis formally downs the first pint after unveiling the Concorde pub sign. Concorde is spelt with an e on the far side of the sign. Picture by "Evening Post."

unveiling the sign and formally downing the first pint, above. The word Concorde is without the final 'e' on this side of the sign, but with it on the far side.

Jean Greenfield, well known as secretary to Social Club secretary Jim Collins gave birth to a baby girl—Julia—on November 11. Julia weighed 7 lb 8 oz at birth.

EFA "In the Field"

TWO more EFA men have taken up residence in the USA. From ADD, Robin Sleight has moved to Arlington, Texas, to look after the A-7 HUD programme. Derek Marshall from TACD has departed to Seattle, Washington, in the "top left-hand corner" of the USA. This is the home of the Boeing Company, who already use the EFA fuel flowmeter in the 747 Jumbo Jet.



Mr H. Woodman, landlord of the new Concorde pub, inspects TACD's montage of Concorde flying over the Rochester factory. Picture by "Evening Post."



Mike Kitley, who has since left ATED, supervises the loading of the first SSE through the swing tail of CL-44 turboprop cargo aircraft in which it was flown to Dallas, Texas.

FROM TEXAS TO AMERICA SSE Deliveries Begin

ONE of the most intensive programmes currently under way in EFA is ATED's production of the Special Support Equipment (SSE) for testing head-up displays being supplied to the USA. The first of 14 sets under a \$6 million order from LTV Aerospace Corporation was delivered in a specially chartered freight aircraft to Dallas, Texas, on August 22, accompanied by a load of steel cattle pens bound for the stockyards of Dallas.

With the equipment went several ATED engineers who were to take part in commissioning the SSE. They had a long, two-day flight to Dallas in a CL-44 turboprop freight aircraft, stopping over-night at Gander.

On to "America"

Shortly afterwards, the first SSE was sent from Dallas to Norfolk, Virginia, where it was installed aboard the nuclear-powered aircraft carrier "America" undergoing extensive refit in the US Navy dockyard. Several ATED people spent

time in the bowels of this mighty ship, setting up the SSE.

The equipment is designed to test the head-up display system automatically under computer control, either at US Air Force bases or on board aircraft carriers. It can be transported by air and survive the air base and shipboard environments. Equipment of this kind can dramatically shorten the time required for checking out electronic equipment and improve accuracy and consistency.



A head-up display mounted for testing in the first SSE console before it left for the USA.

Published by Elliott Flight Automation Ltd, Airport Works, Rochester, Kent. Designed by Lovell & Rupert Curtis Ltd. Printed by Kent Arts Printers Ltd.